

III. Parks and Recreation Facilities Inventory

A. Overview of Parks and Recreation in Liberty Township

The residents of Liberty Township are offered a wide variety of parks, recreational facilities and programs. The community's needs are currently being met by the facilities offered by Liberty Township, MetroParks of Butler County, homeowner association sites, YMCA, and other organizations. Schools also provide some facilities. Figure 2 illustrates the location of the existing parks. Table 8 defines the park type categories used on the maps and tables. Table 9 provides a summary of the parks and recreation areas and facilities within the immediate area of Liberty Township and also indicates the park type category for each existing park. The remainder of this section provides a detailed narrative summary of the parks and recreation facilities offered in the Liberty Township area.

B. Parks and Recreation Classification System

The purpose of developing a park and recreation classification system for a community is to evaluate the total recreation opportunities that are being made available to the public. Too often, a community will "meet the standard" in terms of acreage, but it may meet this provision through only a single park that does not provide for the entire community. Therefore, a system of parks should be developed that provides a combination of local space such as mini parks, neighborhood parks and community parks with county-wide space such as linear parks, county parks and support by regional or state parks.

The parks and recreation facilities inventory in this section identifies each park by its park type category and also lists the specific facilities that are located within each park. Table 8 defines each park by its typical size and service area of each category, population served by each park, typical features and facilities, and the desirable characteristics of each park in these categories. The categories and descriptions were adapted from the Recreation, Park and Open Space Standards and Guidelines that was published by the National Recreation and Parks Association in 1987 and 1995.

A park system is generally reviewed and analyzed as a composite of recreation areas, each existing to meet a particular public need. Based on a review of national and regional standards, a parks and recreation area classification system has been developed to reflect the actual conditions and opportunities for Liberty Township.

Parks and Recreation Facilities Inventory

Table 8: Recommended Park and Recreation Area Classification System

PARK TYPE	TYPICAL SIZE and SERVICE AREA	ACRES/1,000 POPULATION	TYPICAL FEATURES/FACILITIES	DESIRABLE CHARACTERISTICS
LOCAL SPACE:				
1. Mini-Park (MP)	+/- 1 Acre 1/8 – ½ Mile Service Radius	0.5 Acre/1,000	Typical facilities may include playgrounds, small multi-use court area, and benches.	Most often provided in association with school facilities. May also provide open space as needed to serve high density neighborhoods where children do not have adequate yard space.
2. Neighborhood Park (NP)	5-15 Acres ½-1.0 mile service radius. To serve a population up to 5,000	2.0 Acres/1,000	Suited for intense development. Typical facilities include field games, court games, playground apparatus, small pools, small neighborhood centers, drinking fountains, and restrooms.	Easily accessible to neighborhood population (safe walking and bike distance) May be developed as park/school facility or in conjunction with service agency facility. May not be needed in areas served by “community”, “county” or “regional” parks.
3. Community Parks (CmP)	25-50+ Acres 1.0-2.0 mile service radius To serve several neighborhoods with populations up to 20,000+.	2.5 Acres/1,000	Typical facilities include all those listed for Neighborhood Parks plus; major swimming pool, field or court game complex, major recreation or community center, etc. May be an area of natural quality for picnicking, walking, etc.	Capable of providing a range of intensive recreational activities; or, provides one or two activities that attract users from multi-neighborhood areas. Park should ideally be located at or near a school. May meet needs of neighborhood park for users within a 1-mile radius.
4. Linear Park (LP)	N/A	N/A	Area developed for one or more varying modes of recreational travel (pleasure driving, hiking, walking, jogging, biking, etc.). May also include active play areas, fitness courses, picnic areas, etc.	Built or natural corridors, such as utility rights-of-way, bluff lines, creek beds, and roads that link other components of the park system or other community facilities (schools, libraries, etc.) with park areas.

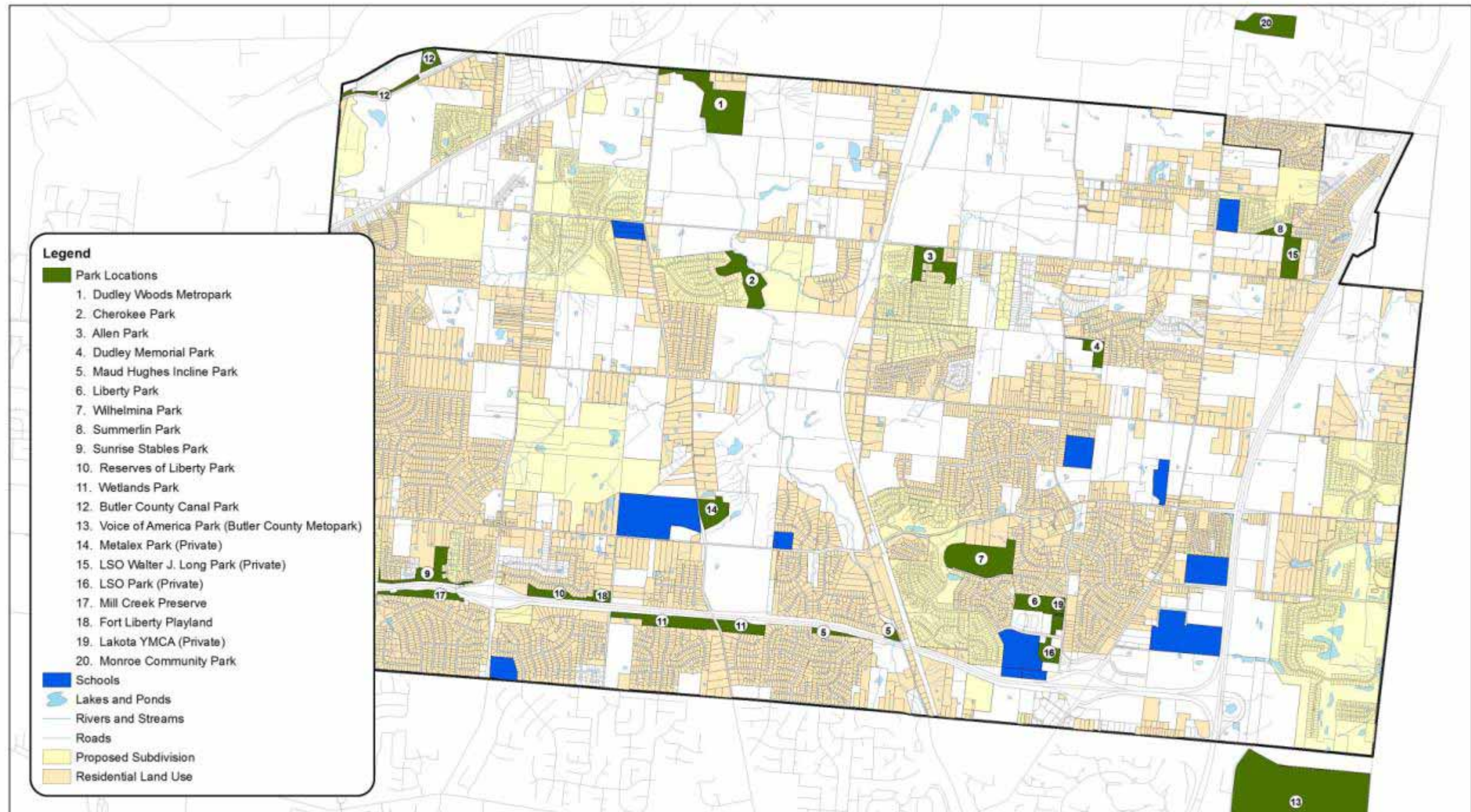
Parks and Recreation Facilities Inventory

PARK TYPE	TYPICAL SIZE and SERVICE AREA	ACRES/1,000 POPULATION	TYPICAL FEATURES/FACILITIES	DESIRABLE CHARACTERISTICS
5. Special Use-Local (SUL)	Serves community-wide area.	N/A	Area for specialized or single purpose recreational activities, such as golf courses, plazas in commercial areas, major pools, riverfront park areas, indoor facilities, etc.	Area should be located to meet the special needs of the intended use.
B. COUNTY SPACE				
6. County Parks (CoP)	200 + Acres 5-6 mile service radius To serve most of the County.	5.0 Acres/1,000	County operated large properties that contain some active recreation facilities and a large percentage of natural or geographical features. Target size of 200 or more acres with 25% developed for active recreation. Located in rural areas but readily accessible to most of the county population. Travel time within 20 minutes. Should be located off of major roads. Destination-oriented parks. Should connect to linear park system.	Capable of providing a range of specific recreational facilities. Should include unique natural areas of ecological interest. May meet needs of neighborhood and/or community park for users within a 2-mile radius.
7. Nature Parks (NaP)	Size as needed to protect the resource.		Majority of park to remain in its natural state. Facilities should focus on education by use of "nature activities." The facility should reinforce that philosophy by offering habitat enhancement, trails, nature centers, interpretive signage, parking and restrooms. The park should be of sufficient size to protect the natural resource and provide a buffer from offsite conditions.	Should include unique natural areas with ecological interest. Typical size should be over 50 acres for management efficiency.

Parks and Recreation Facilities Inventory

PARK TYPE	TYPICAL SIZE and SERVICE AREA	ACRES/1,000 POPULATION	TYPICAL FEATURES/FACILITIES	DESIRABLE CHARACTERISTICS
C. MULTI-COUNTY/REGIONAL SPACE				
8. Regional or State Park (SP)	500 + Acres 30 + mile service radius To serve several counties or region of the state.		State or multi-county agency operated park with large size. Attracts visitors from multiple counties. Contains some active facilities but primarily offers large areas of natural environments. Main attractions could include a lodge, outstanding natural features, historical features, trail system or other unique characteristics.	Includes unique natural, cultural or ecological features.

Figure 2: Existing Park Locations



0 0.25 0.5 1 Miles October 14, 2008



Existing Park Locations
 Liberty Township Parks Master Plan
 Butler County, Ohio

Table 9: Publicly Owned Facilities

Facility Name	Label	Park Type	Devel. Acres	Total Acres	FACILITIES													Other Comments
					Tennis Courts	Baseball/ Softball	Volley- ball	Foot- ball	Soccer	Basketball Courts	Play- ground	Paved Trails (Miles)	Unpaved Trails (Miles)	Picnic Shelter	Rest- room	Swimming Pool	Gym	
Township/County Facilities																		
Allen Park	3	Neighborhood	4.55	26								0.19	0.49					
Butler County Canal Park	12	County	1.55	17														
Cherokee Park	2	Community	1.05	30.5														Small pond.
Dudley Memorial Park	4	Community	4.5	11.4							1		0.37	1				Pond with bird blind.
Dudley Woods Metropark	1	County	3.67	63									1.4	1	1			Old cabin.
Fort Liberty Playland	18	Neighborhood	3.35	3.35							1	0.14		1	1			
Liberty Park	6	Community	18.68	18.68					6		2	0.69		2	1			Soccer goals; 1 small backstop.
Maud Hughes Incline	5	Neighborhood	2.5	4.46								0.68						
Mill Creek Preserve	17	Undeveloped	0	13.78														
Reserves of Liberty Park	10	Neighborhood	13.14	13.14							1	0.68		1				Pond.
Summerlin Park	8	Undeveloped	0	7.58														
Sunrise Stables Park	9	Undeveloped	0	22														
Wetlands Park	11	Community	19.7	41.5								0.87	1.57					Four ponds.
Wilhelmina	7	Undeveloped	0	50.17														
TOTAL - CITY/COUNTY FACILITIES			72.69	322.56	0	0	0	0	6	0	5	3.25	3.83	6	3	0	0	

Table 10: School and Other Facilities

FACILITIES																		
Facility Name	Label	Park Type	Devel. Acres	Total Acres	Tennis Courts	Baseball/ Softball	Volley-ball	Foot-ball	Soccer	Basketball Courts	Play-ground	Paved Trails (Miles)	Unpaved Trails (Miles)	Picnic Shelter	Rest-room	Swimming Pool	Gym	Other Comments
Liberty Township Schools																		
Butler Tech	A	Private	13.08					1										
Cherokee Elementary School	B	Mini-Park	5.34						3		1							
Mother Theresa Catholic Elementary School	C	Private	0.78								1							
Independence Elementary School	D	Mini-Park	3.8			1			1		1							
Lakota East High School	E	Private	27.76		5	4*		1*	1									*Facilities not available to the public.
Woodland Elementary/Liberty Junior School	F	Private	21.45		6	6		1*	2		1							*Facilities not available to the public.
Liberty Elementary School	G	Mini-Park	3.06			1			1	2	1							
Heritage Elementary School	H	Mini-Park	4.43			1			2		1							
Lakota Plains Junior School	I	Community	20.04		5	2		1	3									
Van Gorden Elementary School	J	Mini-Park	5.1			2				2	1							
Wyandot Elementary School	K	Mini-Park	7.22			1			1	2	1							Two funnel ball courts; Four tether ball courts.
TOTAL - SCHOOL FACILITIES			112.06		16	18	0	4	14	6	8	0	0	0	0	0	0	
Other Facilities																		
Voice of America Park (not in Liberty Twp)	13	County	125.73	435		6			14			1.4		1				35 acre lake, lodge, boathouse.
LSO Walter J. Long Park	15	Community/Private	20.07	20.07		4			3		1			1				Maintenance building. Privately owned facility.
LSO Park (Yankee Road)	16	Community/Private	6.3	6.3		6		6**	2									** Flag Football. Privately owned facility.
Metalex Park	14	Private	11.32	77.55			1		3		1			1				
Lakota YMCA	19	Private	1.62	11.37												1	1	Roller hockey rink.
Monroe Community Park (not in Liberty Twp)	20	Community	30.5	30.5		6			5	2	2			3				Two tee-ball fields; Old cabin; Several soccer goals.
TOTAL - OTHER FACILITIES			195.54	580.79	0	22	1	6	27	2	4	1.4	0	6	0	1	1	

*Facilities not available to the public

Table 11: Homeowner Association Properties

Facility Name	Label	Park Type	Devel. Acres	Total Acres	FACILITIES												Other Comments	
					Tennis Courts	Baseball/ Softball	Volley- ball	Foot- ball	Soccer	Basketball Courts	Play- ground	Paved Trails (Miles)	Unpaved Trails (Miles)	Picnic Shelter	Rest- room	Swimming Pool		Gym
HOA Properties																		
Allen Estates											2			1				Open space dedicated to Allen Park
Aspen Trails				38								1.25						
Cedarcrest			0.12	0.12											1			
Charleston Woods				9.08														
Cherokee Estates															1			Open space dedicated to Cherokee Park plus private pool on separate parcel.
Creekside Meadows				21.1								0.65						
Dutchland Acres			4	50.5	2					1					1			
Elk Run				9								0.4						
Fallingwater				33.27								2.4						
Four Bridges			3	208	5					1	1			1	2			2 paddle tennis courts; golf course
Greystone																		Open space dedicated to Sunrise Stables Park
Hawthorne Hills				55.29								1.85			1			
Hughes Woods				28											1			
Lakota Meadows				2.05														
Logsdon Woods			0.12	0.12											1			
Panther Run				20.8								0.79						
Reserves at Elks Pointe				17.5								0.49						
Sanctuary				26.66														
Trails of Four Bridges			3	15				1	0.5	1	0.12				1			
TOTAL - HOA FACILITIES			10.24	534.49	7		0		1	2.5	4	7.95	0	2	0	9	0	
Future Proposed Developments																		
Glenview Ridge				4.08														
Harbour Towne				21.65														
Lakeview Cove				4.95														
Liberty Grand Villas				8.05								0.193			1			
Terry Farm				66														
TOTAL - FUTURE PROPOSED FACILITIES			0	104.73	0	0	0	0	0	0	0	0.193	0	0	0	1	0	
TOTAL - ALL HOA FACILITIES			10.24	639.22	7	0	0	0	1	2.5	4	8.143	0	2	0	10	0	

Parks and Recreation Facilities Inventory

C. County Parks

1. Butler County Miami-Erie Canal Park (17 acres- Figure 3)
 - a. Site location – Northeast corner of the township along the Miami-Erie Canal with access from Liberty-Fairfield Road.
 - b. Existing Facilities – Gravel parking lot.
 - c. Park Needs – This park needs to become part of a longer linear park. Better access is desired.
 - d. Future Great Miami River Trail.

2. Dudley Woods MetroPark (63 acres- Figure 4)

- a. Site Location – Dudley Woods is located on Hankins Road immediately across from the entrance to the Crossings Road in Monroe. This park is operated by the MetroParks of Butler County. The park is titled William F and Cora Dudley Memorial Woods with the address of 5591 Hankins Road.



- b. Existing Facilities
 - (1) Large paved parking area at the entrance to the park.
 - (2) One picnic shelter (25' by 33'). The shelter has 8 picnic tables, two grills, and a wood shaped shingle roof.
 - (3) One restroom facility.
 - (4) 10' wide walking trail (paved in one area).
 - (5) Three (3) picnic tables and a grill adjacent to a log cabin on the west side of the parking lot.

Parks and Recreation Facilities Inventory

Figure 3: Butler County Miami-Erie Canal Park



Figure 4: Dudley Woods MetroPark



Parks and Recreation Facilities Inventory

D. Community Parks

1. Cherokee Park (30.5 acres- Figure 5)



a. Site Location –Cherokee Park is located off of LeSourdesville-West Chester Road in the Cherokee Estates Subdivision. Off Yamasee Drive, the park can be accessed from Selu Drive.

b. Existing Facilities

- (1) Parking lot for five cars.
- (2) Small stocked pond.

c. Park Needs

- (1) This park would be better utilized with more facilities and if better access could be developed.
- (2) An entrance sign is needed.
- (3) There is some severe erosion along Gregory Creek in this area.

Figure 5: Cherokee Park



Parks and Recreation Facilities Inventory

2. Dudley Memorial Park (11.4 acres- Figure 6)

a. Site Location – Dudley Park is located on Yankee Road, north of Millikin Road and south of Kyles Station Road on the east side of the road.

b. Existing Facilities



(1) Gravel parking lot. The parking lot is organized by utility poles and is enclosed with a two rail split rail fence.

(2) Port-a-let and dumpster in southwestern corner of the parking lot area.

(3) One playground. The playground includes one set of teeter totters, a spiral slide, merry-go-round, dinosaur climber, and a set of four swings with three straps and one bucket swing. These are in a terraced area and enclosed with wood timbers. The entire area has a wood mulch surface. There are a few benches around the perimeter of the playground.

(4) One picnic shelter (40' long by 33' wide). There is a drinking fountain and a water hydrant adjacent to the shelter.

(5) Pond with a bird blind.

(6) Unpaved trails.

(7) Two footbridges.

(8) Rolling open fields.

c. Park Needs - The parking area should be paved to better define this area. The entrance road is rough and needs to be regraded and paved. There should also be directional signage on the nature trail. A restroom is also needed.

Parks and Recreation Facilities Inventory

Figure 6: Dudley Memorial Park



Parks and Recreation Facilities Inventory

3. Liberty Park (18.68 acres- Figure 7)

a. Site Location – Liberty Park is located on the west side of Yankee Road, adjacent to the Lakota YMCA.

b. Existing Facilities



The front portion of the park contains:

- (1) One picnic shelter (35' long by 30' wide) immediately adjacent to the parking lot. The shelter has 12 picnic tables.
- (2) Gravel path and metal bridge connecting the park to the adjacent neighborhood.
- (3) Paved 10' asphalt perimeter walking trail.
- (4) Six soccer goals that can be set up as for various fields.
- (5) Two pre-cast concrete restroom structures adjacent to the parking lot.
- (6) Gravel parking area. This area also serves as parking for the YMCA.



The center of the park includes the following:

- (1) One picnic shelter (42' long by 30' wide). This shelter is called the Arthur and Maxine Beard Pavilion and has 12 picnic tables.
- (2) Two separate play areas. The playground equipment includes a set of parallel bars and curved parallel bars with an overhead ladder adjacent to the path, and a funnel ball goal. There is also another area that has one set of six strap swings, tall slide, free standing small slide, merry-go-round, parallel bars, overhead climbing structure, another set of swings with six swings, with four straps and two bucket swings, a balance beam, and a dinosaur climber. This is all in a wood mulch area with wood timbers around the perimeter.
- (3) One small backstop.



The back of the park includes the following:

- (1) Several soccer goals.
- (2) Walkway entrance on the north side to the adjacent subdivision.

Parks and Recreation Facilities Inventory

- c. Park Needs
 - (1) Pave the parking lot
 - (2) Upgrade playground equipment

Figure 7: Liberty Park



Parks and Recreation Facilities Inventory

4. Wetlands Park (41.5 acres- Figure 8)



- a. Site location – Wetlands Park is located on Lesourdsville-West Chester Road, just south of State Route 129, located on both sides of the road and adjacent to State Route 129. The entrance to the western portion of the park is from Van Gordon Road.
- b. Existing Facilities
- (1) Two small parking lots. The first is located on the east side of the road, and has 8 spaces. At the west end there is a second parking lot for approximately 10 cars along the roadway into the park from Van Gordon Road.
 - (2) Paved 10' wide walking trail that goes around the wetland and pond area and back to the parking lot. There is also a connecting trail under State Route 129 to the adjacent subdivision.
 - (3) Four ponds. A paved trail encircles the first pond east of Lesourdsville-West Chester Road, and the second lower pond has a perimeter mulch trail.
 - (4) Several footbridges.
 - (5) Several trees identified with engraved plastic plaques.
 - (6) Gated entrance into the park.
 - (7) Fence on the south side of the park separating the park from the adjacent subdivision.
 - (8) Unpaved trails through the woods.
 - (9) Circular drive and parking lot with a flag pole, large flag, and cannon at the west end of the park. This parking lot will hold 12 cars.
- c. Park Needs - The park could use mileage markers along the trail, as well as a restroom facility, possibly near the parking area between the parking area and the highway behind the park sign. Items identified in the Wetlands Park Committee Survey are also needed.

Parks and Recreation Facilities Inventory

Figure 8: Wetlands Park



Parks and Recreation Facilities Inventory

E. Neighborhood Parks

1. Allen Park (26 acres- Figure 9)



- a. Site Location – Allen Park is located on the south side of Kyles Station Road on both sides of the entrance to Allen Estates Subdivision, which is at Joanne Drive.

b. Existing Facilities

The front of the park includes the following:

- (1) Small parking areas on the two sides with some sloping fields.
- (2) One sign board (on the west side).
- (3) One bench (on the west side).



The west side of the park includes the following:

- (1) Seven parking spaces.
- (2) Woodchip trail with timbers on the outer edge towards the creek around the perimeter of the open area near the entrance.
- (3) Two benches (on the western side of the entrance).



The northeast corner of the property includes the following:

- (1) Mulch trail around the perimeter of an open field.
- (2) Footbridge across the creek.
- (3) Gravel trail.

The entrance of the park includes the following:

- (1) Entrance sign that reads “Allen Park. This park donated to Liberty Township by Lucky and Michele Allen and family in memory of Joanne L. Allen.
- (2) Six parking spaces on the east side of the entrance.

Figure 9: Allen Park



Parks and Recreation Facilities Inventory

2. Fort Liberty Playland (3.35 acres- Figure 10)



a. Site Location – Fort Liberty Playland is located on Van Gordon Road, just north of the State Route 129. The Fort Liberty Playland was built by the community and dedicated on September 26th, 1999.

b. Existing Facilities

- (1) Gravel parking lot.
- (2) One restroom.
- (3) One large playland.
- (4) One picnic shelter (50' long by 20' wide). The shelter has 11 rectangle picnic tables and 2 recycled octagon shape tables and there are also 4 additional tables outside. Another shelter is under construction, estimated completion is April 2009.
- (5) Paved asphalt trail (10' wide). The trail goes between the Playland and the highway and extends along the highway toward the west.
- (6) Bridge across State Route 129 has a raised sidewalk to provide access to the entrance to the west end of Wetlands Park.

c. Park Needs

- (1) The walkway to the shelter from the parking lot needs to be paved because it is really wet even though it is mulch.
- (2) The parking lot should be paved.

Figure 10: Fort Liberty Playland



Parks and Recreation Facilities Inventory

3. Maud Hughes Incline (4.46 acres- Figure 11)



- a. Site Location – Maud Hughes Incline Park is located on Maud Hughes Road adjacent to State Route 129.
- b. Existing Facilities
 - (1) Park entrance consists of four parking spaces, an entrance sign, and a bulletin board.
 - (2) A trail goes under State Route 129 to three sets of steps that traverse up the slope and then to a 10' wide paved trail that follows along the right-of-way. The steps are designed to accommodate rolling bikes down along the side of the steps with a groove on each side.
- c. Park Needs – This park provides an opportunity for additional neighborhood park facilities such as a shelter. The configuration may need to change when Maud Hughes Road is improved.

Figure 11: Maud Hughes Incline



Parks and Recreation Facilities Inventory

4. Reserves of Liberty Park (13.14 acres- Figure 12)

- a. Site location – Reserves Park is located off of Grandin Ridge Drive. This currently provides the western terminus of the trail that extends from Fort Liberty Playland.



b. Existing Facilities

- (1) A pond. There is a paved trail around the perimeter of the pond.

- (2) Paved parking lot. There is an adjacent path that leads over to the Fort Liberty Playland.

- (3) One picnic shelter (45' long by 30' wide). There are currently 13 tables inside this shelter.



- (4) One playground. The playground has a poured-in-place rubber surface so that it is handicap accessible. The facility includes one overhead climbing structure, a set of four tot swings, a merry-go-round, another overhead climbing structure with parallel bars, funnel ball, a small slide, small track ride, four strap swings, a set of parallel bars, and another set of swings with two handicap accessible seats and two strap swings.

- (5) Rolling open space to the east of the picnic shelter and playground area.

- c. Park Needs - The park needs a sign at the entrance along Grandin Ridge Drive. The playground needs updated. A restroom would improve the use of the park.

Parks and Recreation Facilities Inventory

Figure 12: Reserves of Liberty Park



Parks and Recreation Facilities Inventory

F. Undeveloped Park Land

1. Mill Creek Preserve and Sunrise Stables Park (13.78 acres- Figure 13)
 - a. Site location – Mill Creek Preserve and Sunrise Stables Park are located on Logsdon Meadows Drive which is off of State Route 747, just north of the Butler County Veterans Highway, State Route 129. This is also called Sunrise Stables Park. Logsdon Meadows Drive runs parallel to the state highway. The portion north of SR 129 is Sunrise Stables and the area south is Mill Creek Preserve.
 - b. Existing Facilities
 - (1) Green space along the road right-of-way, and various open spaces between lots.
 - (2) Sign that reads, “Future Liberty Township Park” at Sunrise Stables.
 - (3) Access to Mill Creek Preserve if possible.

Figure 13: Mill Creek Preserve and Sunrise Stables Park



Parks and Recreation Facilities Inventory

2. Summerlin Park (7.58 acres- Figure 14)

Site location – Summerlin Park is located adjacent to the LSO Walter Long Athletic Complex and there is no direct access into this site. It is located behind the subdivision streets.

Figure 14: Summerlin Park



Parks and Recreation Facilities Inventory

3. Wilhelmina Park (50.17 acres- Figure 15)
 - a. Site location – Wilhelmina Park is located on Wilhelmina Drive off of Yankee Road.
 - b. Existing facilities – A mowed path.
 - c. Park Needs – A Master Plan should be developed for this park in coordination with the neighbors.

Figure 15: Wilhelmina Park



Parks and Recreation Facilities Inventory

G. Parks by Others

1. LSO Walter J. Long Park (20.07 acres- Figure 16)

- a. Site location – Walter J. Long LSO Fields are located on Kyles Station Road, east of Cincinnati Dayton Road.



b. Existing Facilities

- (1) Gravel parking lot along front of the property.
- (2) Maintenance building.
- (3) Four baseball fields with dirt infields in the front half of the park.
- (4) Large rear parking lot.
- (5) One small playground. This playground has wood climbing structures, and two bucket swings.
- (6) One picnic shelter (20' wide by 45'). The shelter has six picnic tables.
- (7) Two terraced elevations where there are soccer fields.
- (8) Two footbridges that are all Eagle Scout projects.



- c. Park Needs - The shelter is not handicap accessible, and it does not appear that there is an adequate amount of mulch under the play equipment as it is washing away.

2. LSO Park (6.30 acres- Figure 17)

- a. Site location – LSO fields are located west of Yankee Road and adjacent to Woodland Elementary School and Liberty Junior School.



b. Existing Facilities

- (1) Six baseball fields with soccer fields in the outfields. The two eastern fields are on property owned by Royal Redeemer Lutheran Church.
- (2) Gravel parking lot.
- (3) Concession building.
- (4) Two soccer fields.

- c. Park Needs - Paved parking on the Yankee Road side as well as paved spectator areas. There should also be accessible paths from parking lots to spectator areas. There is also a need for restrooms.

Parks and Recreation Facilities Inventory

Figure 16: LSO Walter J. Long Park



Figure 17: LSO Park



Parks and Recreation Facilities Inventory

3. Voice of America Park (435 acres- outside the township limits-Figure 18) (MetroParks of Butler County)
 - a. Site location – The Voice of America Park is bordered by Cox Road, Hamilton-Mason Road, Butler-Warren Road, and Tylersville Road.
 - b. Existing Facilities
 - (1) 35-acre lake.
 - (2) Banquet facility.
 - (3) Gazebo.
 - (4) Wiggly Field Dog Park.
 - (5) 1.4 mile paved walking/biking path.
 - (6) Row boat and pedal boat rental.
 - (7) Picnic areas.
 - (8) One shelter.
 - (9) Six baseball fields.
 - (10) 14 multipurpose rectangular fields.
 - (11) One Cricket Field
 - c. Park Needs – Figure 19, VOA Park Enhancement Plan, illustrates the plan for improvements that was unveiled by MetroParks of Butler County in July, 2008. A 256 acre portion of the site was transferred from West Chester Township to MetroParks of Butler County in April, 2008.

Parks and Recreation Facilities Inventory

Figure 18: Voice of America Park



Parks and Recreation Facilities Inventory

Figure 19: VOA Park Enhancement Plan



Parks and Recreation Facilities Inventory

4. Lakota YMCA (11.37 acres- Figure 20)



a. Site location – The Lakota YMCA is located off of Yankee Road next to Liberty Park.

b. Existing Facilities

- (1) One outdoor swimming pool with eight lanes, slide and zero depth entry area.
- (2) One gym and fitness center.
- (3) One indoor swimming pool with a toddler pool.
- (4) Indoor playland.
- (5) Indoor and outdoor climbing wall.
- (6) Multi-purpose room.
- (7) Two racquetball courts.
- (8) Nursery room.
- (9) One outdoor roller hockey rink.

Figure 20: Lakota YMCA



Parks and Recreation Facilities Inventory

5. Monroe Community Park
 - a. Site location – Monroe Community Park is located on Cin-Day Road in Monroe.
 - b. Existing Facilities
 - (1) Two basketball courts.
 - (2) Two tee-ball fields.
 - (3) Four baseball fields.
 - (4) Two playgrounds.
 - (5) A log cabin.
 - (6) Nature trail.
 - (7) Three picnic shelters.
 - (8) Several soccer goals spread throughout the park.

H. Private Parks

1. Metalex Park (77.55 acres)
 - a. Site location – Metalex Park is a private park located across from the Lakota Schools on Lesourdsville-West Chester Road at the corner of Princeton Road.
 - b. Existing Facilities
 - (1) Several soccer fields with some overlook structures to view practices.
 - (2) One picnic shelter.
 - (3) One playground. The playground equipment includes a slide, climbing structure, swing set, merry-go-round, and some bucking toys.
 - (4) One volleyball court.
 - (5) Paved trails leading back to a lodge type building.
2. Trails of Four Bridges (15 acres)
 - a. Site location – Trails of Four Bridges is located at the corner of Princeton Road and Butler Warren County Road. This is a private park that is part of the adjacent subdivision.



Parks and Recreation Facilities Inventory

- b. Existing Facilities
 - (1) One pond.
 - (2) Open space.

I. Schools

- 1. Butler Tech
 - a. Site location – Butler Tech is located on Hamilton Middletown Road
 - b. Existing Facilities - One football field and track.
- 2. Mother Theresa Catholic Elementary School
 - a. Site location – Mother Theresa Catholic Elementary School is located off of Millikin Road on Jackie Drive.
 - b. Existing Facilities - One playground.
- 3. Lakota Plains Junior School
 - a. Site location – Lakota Plains Junior is located on Princeton Road.
 - b. Existing Facilities
 - Adjacent to the school are:
 - (1) Five tennis courts.
 - (2) One football field with bleachers.
 - (3) One softball field.
 - (4) One baseball field.
 - (5) Three soccer fields.
- 4. Van Gorden Elementary School
 - a. Site location – Van Gorden Elementary school is located on Lesourdsville-West Chester Road near Princeton Road.
 - b. Existing Facilities
 - (1) Two baseball fields.
 - (2) Basketball goals.
 - (3) Playground equipment. This includes one large climbing structure, an overhead climbing structure, a set of eight



Parks and Recreation Facilities Inventory

swings (with one being a bucket swing), an arch climber, and one other structure. These playground pieces have a pea gravel safety surface and some plastic timber edging.

5. Liberty Elementary School on Princeton Road
 - a. Site location – Liberty Elementary is located on Princeton Road.
 - b. Existing Facilities
 - (1) Four basketball goals.
 - (2) Several playground structures. There are 16 swings, slide structure, another set of 4 swings, several arch climbing structures, and other equipment. This area has a mulch surface.
 - (3) One baseball field.
 - (4) One soccer field.
6. Cherokee Elementary School
 - a. Site location – Cherokee Elementary is located on Kyles Station Road.
 - b. Existing Facilities
 - (1) Two soccer fields.
 - (2) One playground.
7. Woodland Elementary/Liberty Junior School
 - a. Site location – Woodland Elementary and Liberty Junior School are located on Dutchland Boulevard, near Yankee Road Liberty Park.
 - b. Existing Facilities
 - (1) Six tennis courts.
 - (2) Six baseball and softball fields.
 - (3) One soccer fields.
 - (4) One playground.

Parks and Recreation Facilities Inventory

8. Wyandot Elementary School
 - a. Site location – Wyandot Elementary is located on Cin-Day Road between Summerlin Boulevard and Kyles Station Road.
 - b. Existing Facilities
 - (1) One playground. The playground has a mulch surface, a set of six swings, and a large climber.
 - (2) Two funnel ball courts.
 - (3) Four tether ball courts.
 - (4) Two basketball courts.
 - (5) One baseball/softball field.
 - (6) One soccer field.
9. Independence Elementary School
 - a. Site location – Independence Elementary is located on Princeton Road just west of Cincinnati-Dayton Road.
 - b. Existing Facilities
 - (1) One baseball field.
 - (2) One soccer field.
 - (3) One playground.
10. Heritage Elementary School
 - a. Site location – Heritage Elementary is located on Hamilton Mason Road just east of Interstate 747.
 - b. Existing Facilities
 - (1) One baseball field.
 - (2) Two soccer fields.
 - (3) One playground.
11. Lakota East High School
 - a. Site location – Lakota East High School is located on Lakota Lane off of Wyandot Lane.

Parks and Recreation Facilities Inventory

- b. Existing Facilities
 - (1) Five tennis courts.
 - (2) Four baseball fields.
 - (3) One football field.
 - (4) One soccer field.