

### IV. Needs Analysis

#### A. General

The Needs Analysis consists of the following elements:

1. The classification of the existing parks and recreation facilities into standard park classifications.
2. A discussion of the parks and recreation area needs by park types.
3. A discussion of the geographic distribution of parks and recreation facilities.
4. A summary of the public workshops and focus groups.
5. A summary of the parks and recreation survey that was accomplished in 2008.
6. The summary of the benchmark survey that was accomplished among communities in Ohio.
7. A Facilities Needs Analysis and Level of Service Standards based upon accepted standards and guidelines, that past experience of the Consultant; and agreed upon by the Master Plan Steering Committee.
8. A summary of the overall parks and recreation facilities needs.

#### B. Park and Recreation Area Needs by Park Type

The beginning portion of Section III included the table which indentified the various classifications of parks and recreation areas. These are consistent with the National Recreation and Park Asociation guidelines, as well as the Comprehensive Plan of Liberty Township. A general set of goals for the various park types was established by the consulting team and the Master Plan Steering Committee as the Level of Service Standards for the township. These goals are consistent with several recent plans completed by the Consultant and communities throughout the nation. Table 12, Total Park Land Level of Service Guidelines, provides a breakdown of the needs for Liberty Township. This table includes many parks and neighborhood parks that are part of school sites and homeowner association sites because they do serve some of the park needs for residents.

Table 12 compares the population in 2008, 2013, and at build-out. ***In general, there is currently a deficit of 244 acres by these standards, which will grow to 322 acres by 2013 and then 759 acres at build-out.*** Currently, the largest deficit is the community wide parks of 195 acres which grows to 470 acres at build-out. The need for larger county space will continue to grow from a current deficit of 35 to 207 acres by build-out. The current demand for neighborhood

## Needs Analysis

---

parks is short by 14 acres according to the standards, but will become a deficit of 83 acres by build-out.

The lower portion of Table 12 identifies the need for both parks and open space. Including the township, county, schools, homeowner associations, and private parks and open space, there is 1,078 acres set aside. This is a surplus currently, but will grow to a deficit of 947 acres by build-out of this community.

Table 12: Total Park Land Level of Service Guidelines

Developed Park Land - Liberty Township 2008 - Buildout								
Park Type	Existing Park & Open Space Acres	Recommended Acres/1000 Population	2008 Recommended Acres	2008 Surplus Deficit(-)	2013 Recommended Acres	2013 Surplus(+) Deficit(-)	Buildout Recommended Acres	Buildout Surplus(+) Deficit(-)
Mini/Neighborhood <sup>1</sup>	52.49	2	66.4	-14	77	-24	135	-83
Community <sup>2</sup>	70.3	8	265.4	-195	307	-237	540	-470
County <sup>3</sup>	130.95	5	165.9	-35	192.0	-61	338	-207
<b>Total</b>	<b>253.74</b>	<b>15</b>	<b>498</b>	<b>-244</b>	<b>576</b>	<b>-322</b>	<b>1013</b>	<b>-759</b>

Total Park Land and Dedicated Open Space- Liberty Township 2008 - Buildout								
Land Ownership	Existing Park & Open Space Acres	Recommended Acres/1000 Population	2008 Recommended Acres	2008 Surplus Deficit(-)	2013 Recommended Acres	2013 Surplus(+) Deficit(-)	Buildout Recommended Acres	Buildout Surplus(+) Deficit(-)
Township & County Owned	322.56							
School Recreation Land	112.06							
LSO	26.37							
Metalex Park	77.55							
Lakota YMCA	5.38							
HOA Dedicated Open Space <sup>4</sup>	534.49							
<b>Total</b>	<b>1078.41</b>	<b>30</b>	<b>995.4</b>	<b>83</b>	<b>1152</b>	<b>-73</b>	<b>2025</b>	<b>-947</b>

Year	Population	Source
2008 population estimate	33,180	Liberty Township
2013 population projection	38,394	ESRI BIS forecast
Buildout		
at 1.6 d.u. / acre	59,958	Liberty Township Comprehensive Plan
at 2.0 d.u./ acre	66,929	Liberty Township Comprehensive Plan
at 2.5 d.u./ acre	75,643	Liberty Township Comprehensive Plan
Use an average of	67,510	

**Notes**

- 1 Includes school properties that are accessible to the public
- 2 Includes LSO sites
- 3 Includes VOA Park since it is so close
- 4 Includes dedicated open space in subdivisions

### C. Geographic Distribution of Parks and Facilities (Figures 21-31)

Figure 21, Park Service Areas Map, indicates an inventory of the existing parks, schools, private parks, homeowner's association sites, and identifies the service areas for each of these various types of parks. The darker green circles indicate areas within a quarter mile of a mini-park, neighborhood park, or community park. The medium green circles identify areas within a half mile of a neighborhood park, community park, or county park. The lightest green indicates areas within one mile of a county park. The bright yellow properties are homeowner association open space whereas the lighter yellow sites are HOA parks. The background color of beige indicates residential areas. The existing and proposed bikeway plans, sidewalk areas, and trails are indicated on this map by the dashed lines. The golf courses are indicated by the green hatching. This map serves to indicate the gaps where neighborhoods are not served very well by parks. It illustrates that there is a large area in a very central portion of the community that is not served by park land, as well as the entire township west of State Route 747 lacking park space close to home. There is a larger concentration of parks on the southern boundary, mainly due to the properties located along State Route 129 that were purchased as part of the State Route 129 development. Liberty Park and Dudley Woods Memorial Park anchor the eastern third of the area by providing some park space. There is also a lack of park space in the extreme north east corner near the Summerlin Neighborhood and it is assumed that the Walter J. Long LSO Park serves some of these needs, but there is not much community park space available. East of Interstate 75, there is also a lack of space with the exception of homeowner association sites and golf course at this location, which serves some of these residents needs.

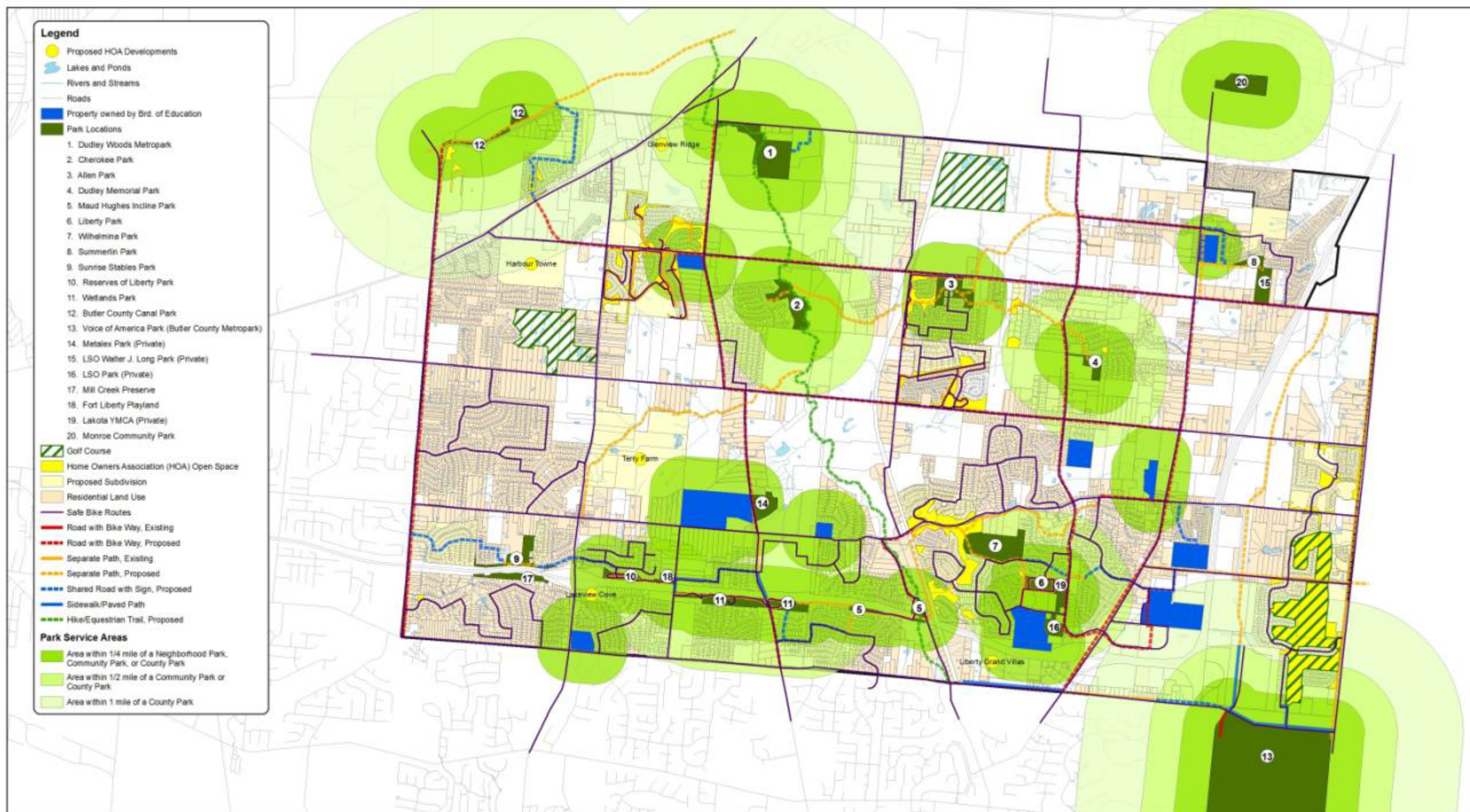
### D. Geographic Distribution of Facilities

Another analysis is a review of the geographic distribution of specific types of facilities that are provided to residents. These are indicated on Figures 22-31. These maps indicate the parks and schools with the various facilities in the red triangles and purple asterisks on the homeowner association properties with the proposed facility. Homeowner association properties are identified in yellow and residential areas are identified with the beige color. Parks are indicated in the green color and schools are indicated in blue. Below, are discussions of each of the specific facilities:

#### 1. Parks with Picnic Shelters

Figure 22, identifies the parks with picnic shelters. This illustrates that there are three shelters on public land in the eastern half of the community and five shelters in the west with a large gap in the west central area and east of I-75.

Figure 21: Park Service Areas Map



0 0.25 0.5 1 Miles

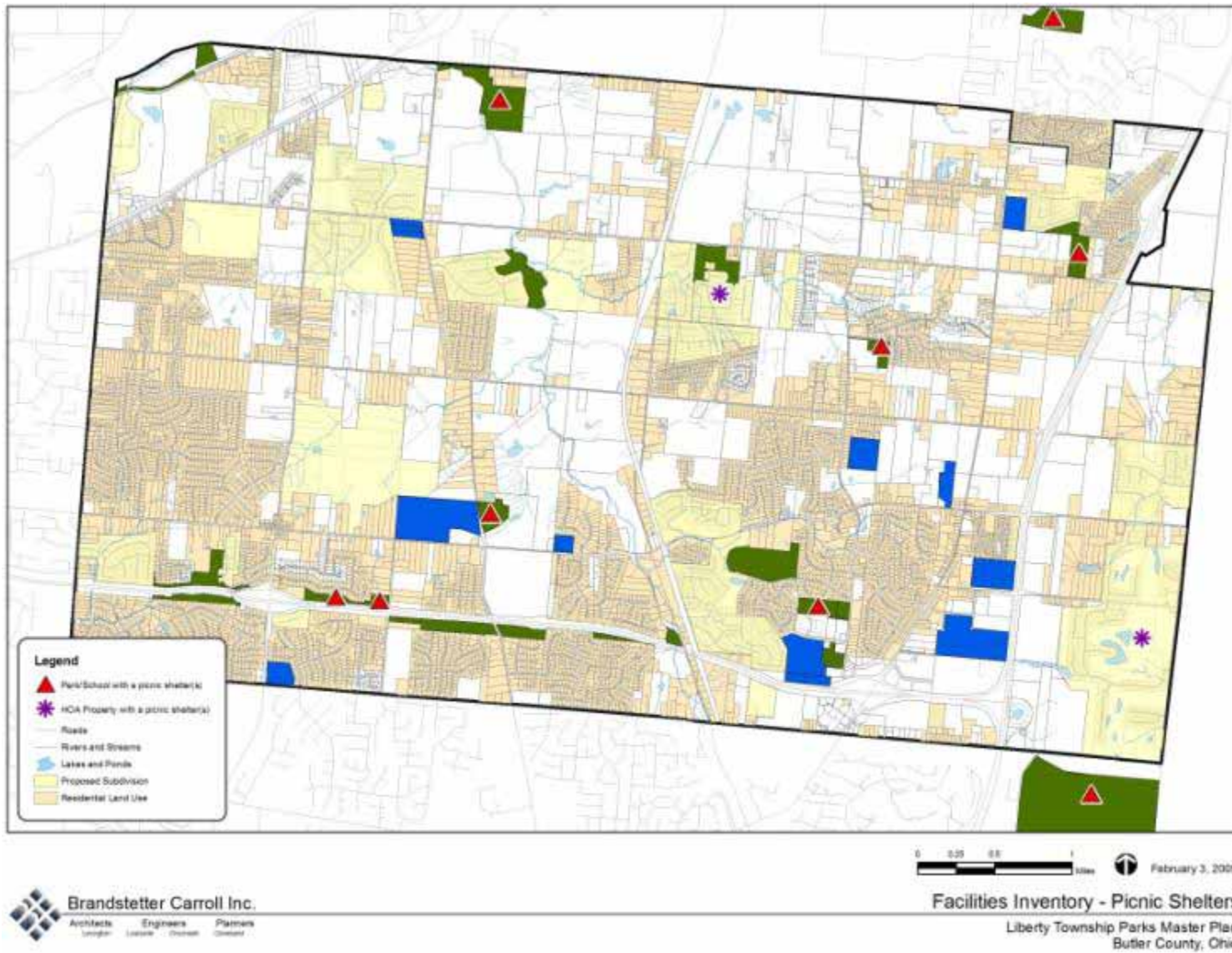
February 11, 2009



**Park Service Areas**  
Liberty Township Parks Master Plan  
Butler County, Ohio



Figure 22: Park Shelter Locations



### 2. Parks with Playgrounds

Figure 23, identifies those parks and properties with playgrounds. The map indicates gaps in the west, central and north.

### 3. Parks with Soccer Fields

Figure 24 identifies the locations of schools and parks where soccer fields are located. The only soccer field that is located on a township property is at Liberty Park. The other locations are schools, LSO sites, and the Metalex Site. The VOA Park just outside of the township limits in the southeast corner provides several fields currently and plan to have up to 23 fields in the future.

### 4. Parks with Baseball/Softball Fields

Figure 25 identifies location of the baseball and softball fields. Again, none of these facilities are located in any township properties. They are located at schools and the LSO sites, as well as at the VOA Park. The map shows a large gap in the western half of the community where there is a lack of baseball and softball fields.

### 5. Parks with Outdoor Basketball Courts

Figure 26 identifies parks with outdoor basketball courts and illustrates only a few sites where basketball courts are available, which are primarily at schools. There are also three sites which indicate basketball courts at HOA properties. Again, there is a large gap in the west, and the central portion of the township.

### 6. Parks with Tennis Courts

Figure 27 illustrates the parks and schools with tennis courts. This figure illustrates three school locations in the southern portion of the township, which have tennis courts and two HOA properties. This illustrates a large gap in the entire western and northern two thirds of the township where there are no tennis courts available.

### 7. Parks with Football Fields

Figure 28 identifies football field locations primarily at school sites. There is also a large gap in the northern two thirds and the western third of the township.

8. Swimming Pools

Figure 29 illustrates the swimming pools located within the township and illustrates that there is an outdoor pool located at the Lakota YMCA and the others are located at HOA properties.

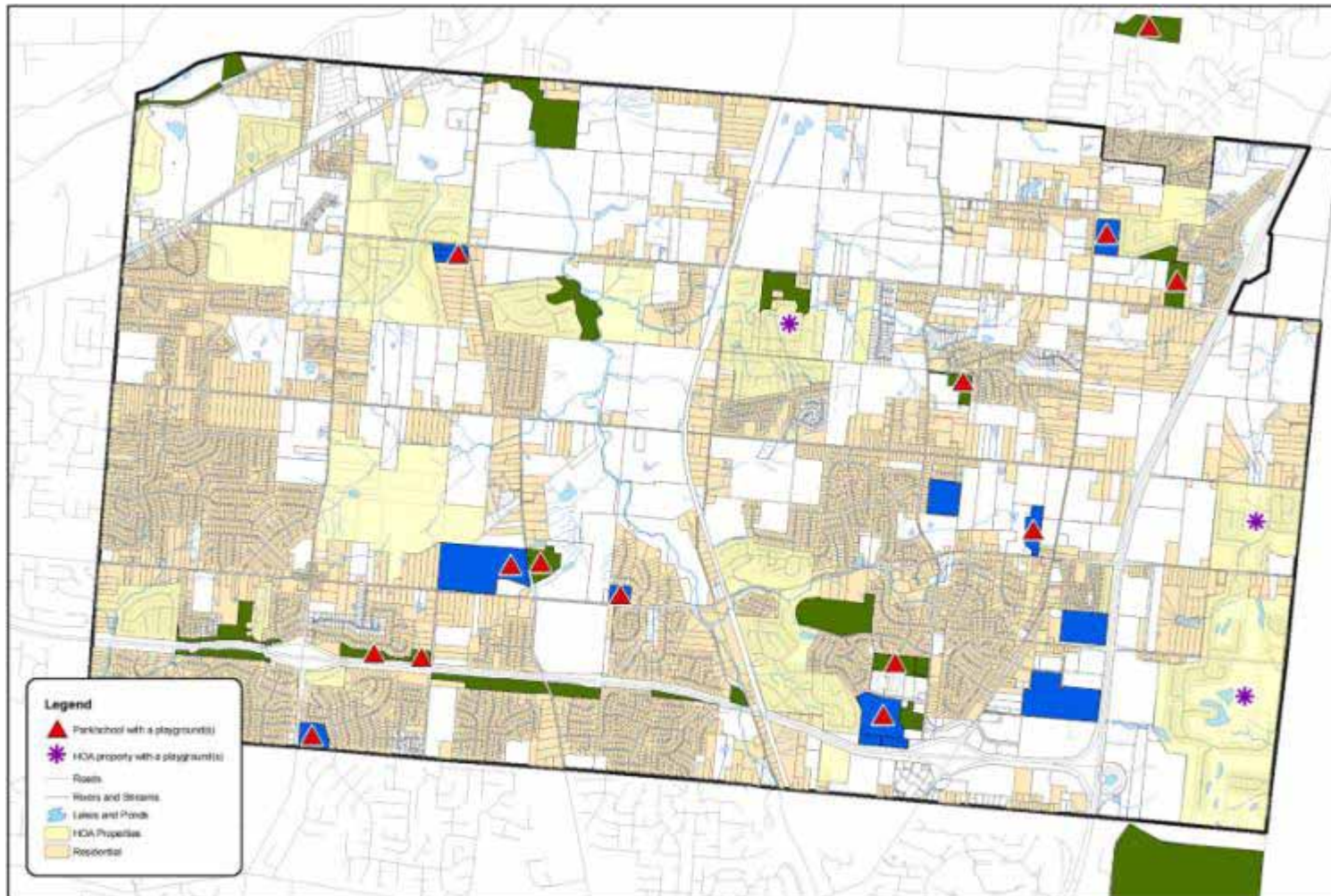
9. Parks with Volleyball Courts

Figure 30 indicates location of an outdoor volleyball court at Metalex Park which is a private site. Other sites are the HOA properties, but there is still a large gap in the northern two thirds and the western one third of the township.

10. Parks with Restroom Facilities

Figure 31 illustrates the parks with restroom facilities. This is important for families to spend the day. The map illustrates that there are restroom facilities available at the Fort Liberty Playland, Liberty Park, portalets available at the Dudley Memorial Park, and restrooms available at the Dudley Woods Metro Park. Many other facilities do not have restrooms, which have been requested by the residents.

Figure 23: Playground Locations

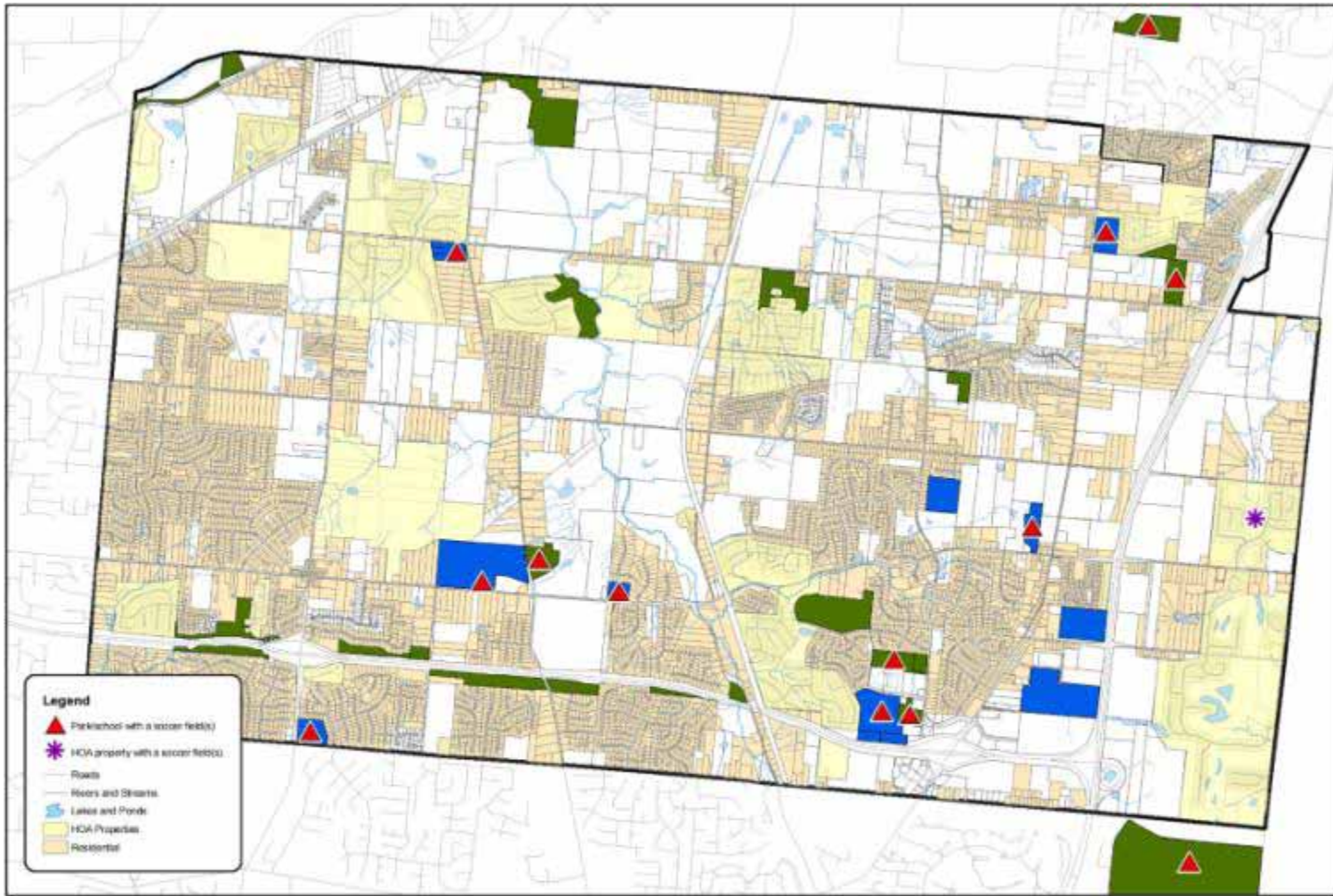


0 0.25 0.5 1 Miles  
October 14, 2008

**Brandstetter Carroll Inc.**  
Architects Engineers Planners  
Landscapers Landscape Architects Generalists

**Facilities Inventory - Playgrounds**  
Liberty Township Parks Master Plan  
Butler County, Ohio

Figure 24: Soccer Field Locations



0 0.25 0.5 1 Miles October 14, 2008



Facilities Inventory - Soccer Fields  
Liberty Township Parks Master Plan  
Butler County, Ohio

Figure 25: Baseball/Softball Field Locations

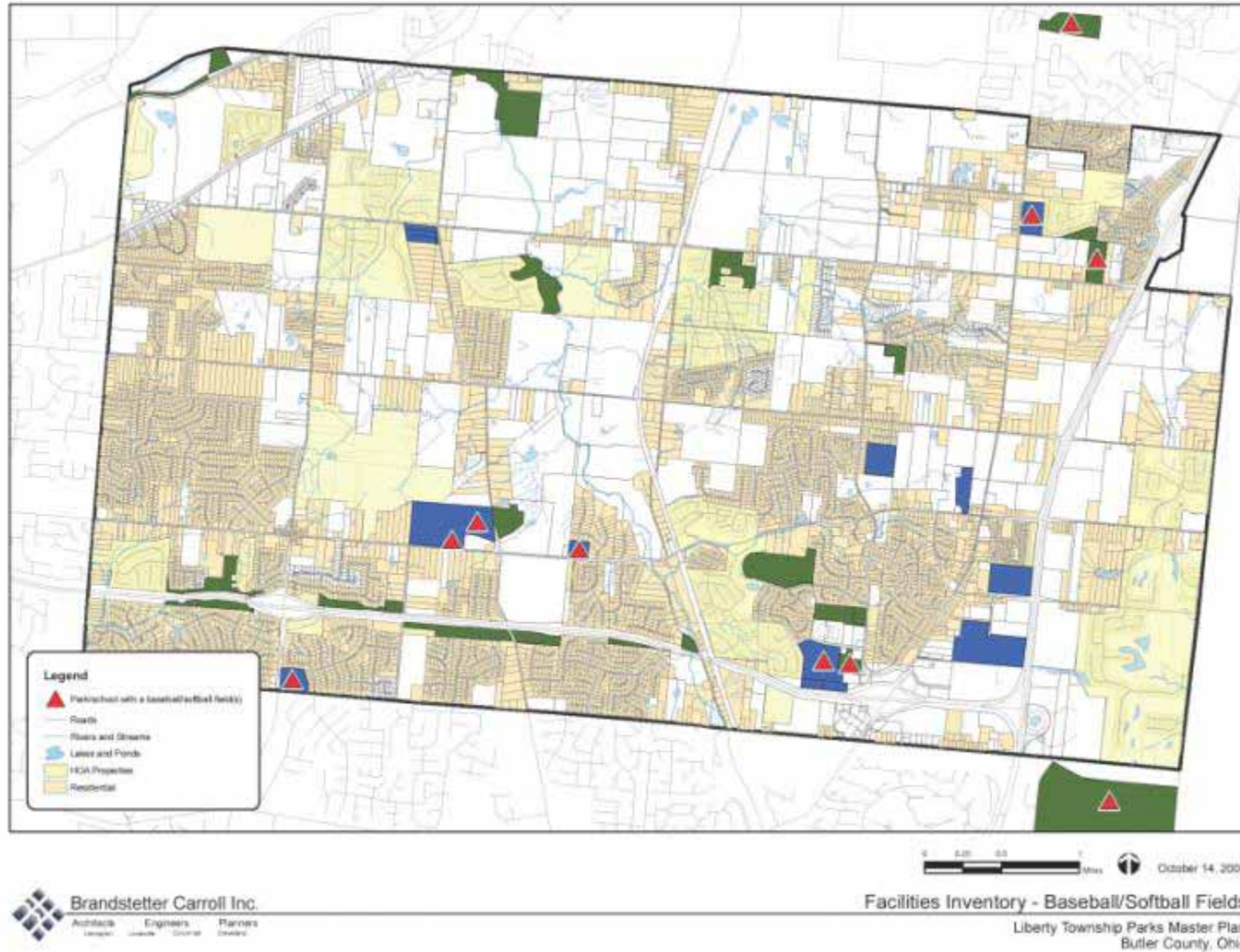
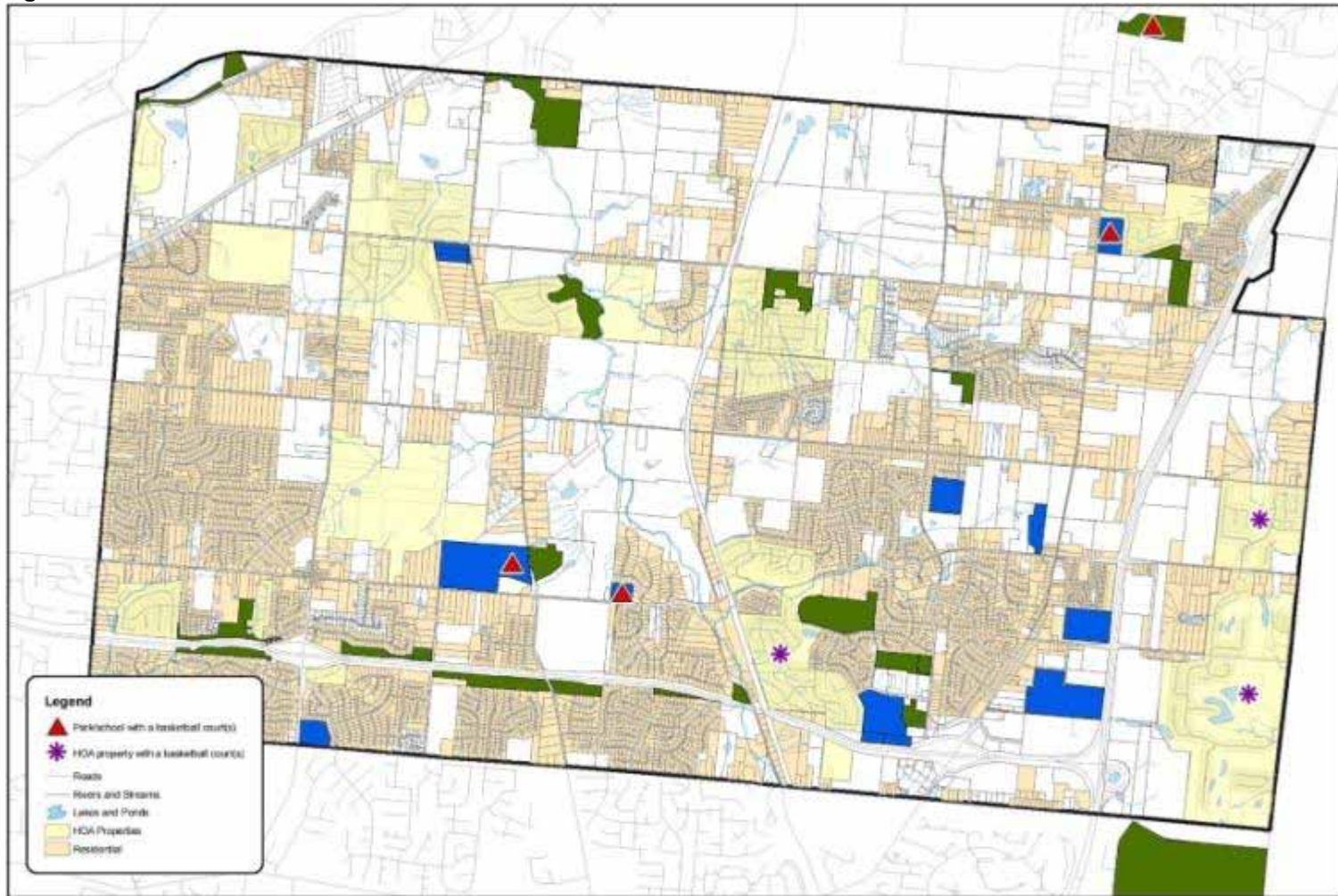
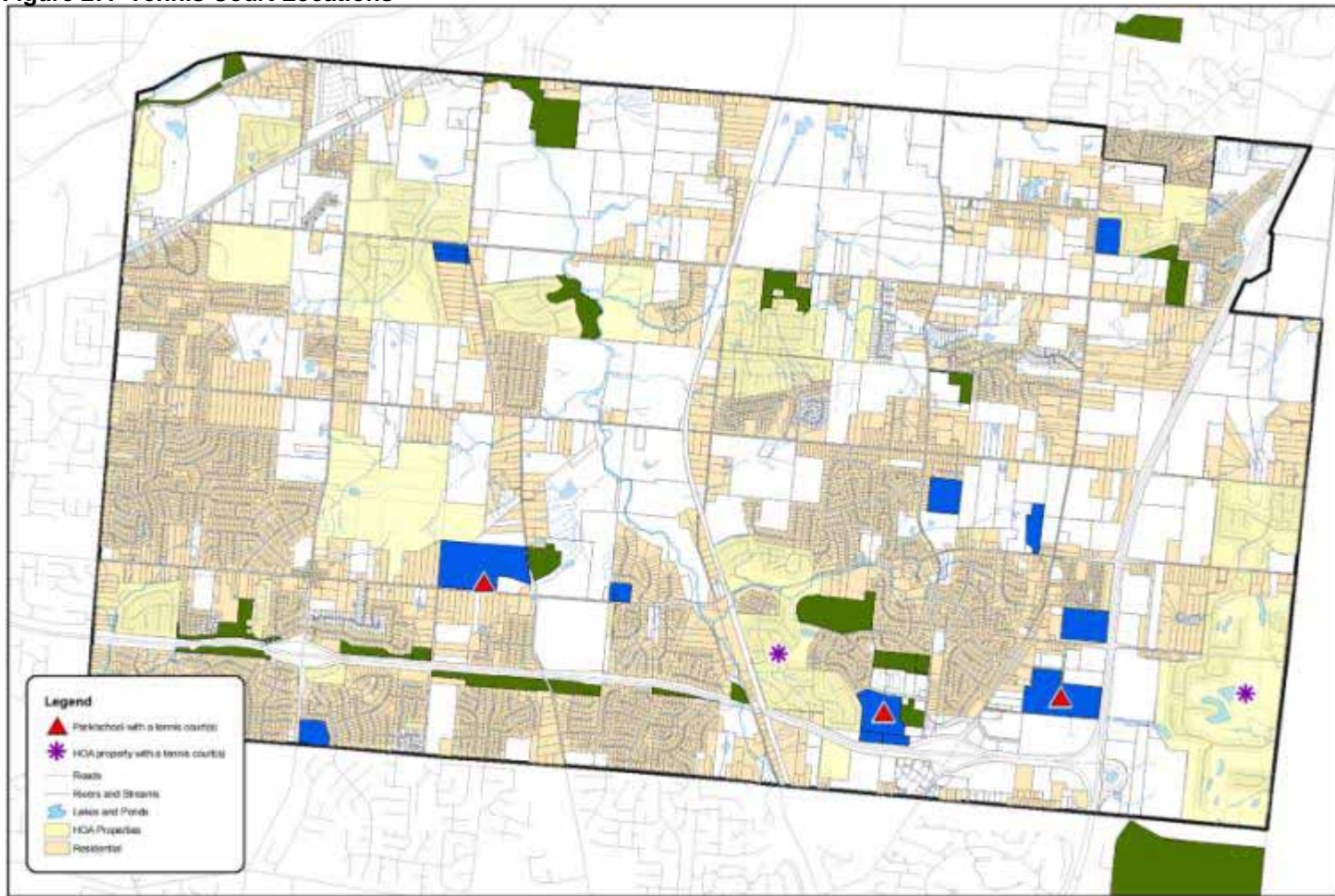


Figure 26: Outdoor Basketball Court Locations



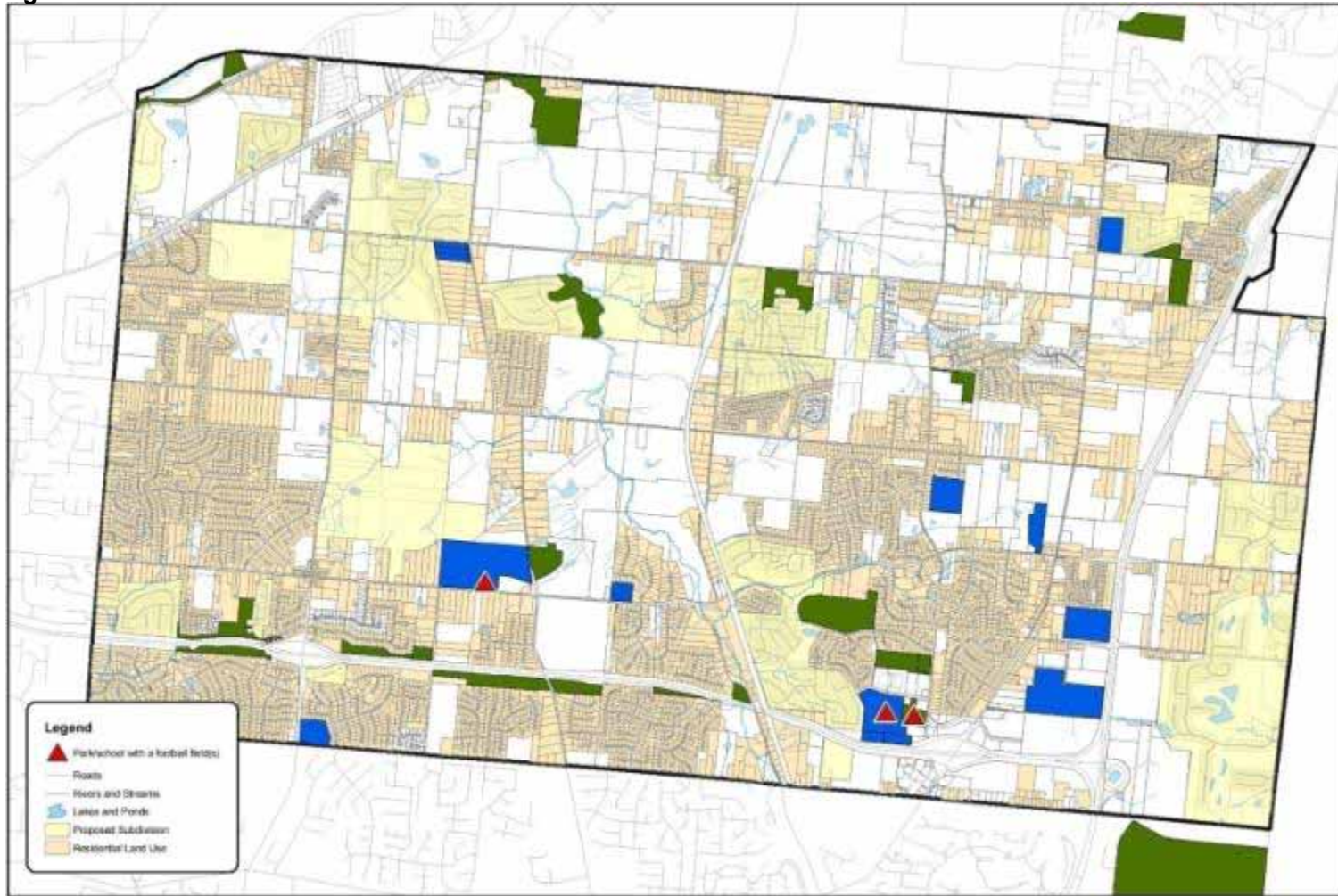
0 0.25 0.5 1 Miles October 14, 2008

Figure 27: Tennis Court Locations



0 0.25 0.5 1 Miles October 14, 2008

Figure 28: Football Field Locations



0 0.25 0.5 1 Miles  
January 7, 2009

**Brandstetter Carroll Inc.**  
Architects Engineers Planners  
Landscape Architects

**Facilities Inventory - Football Fields**  
Liberty Township Parks Master Plan  
Butler County, Ohio

Figure 29: Swimming Pool Locations

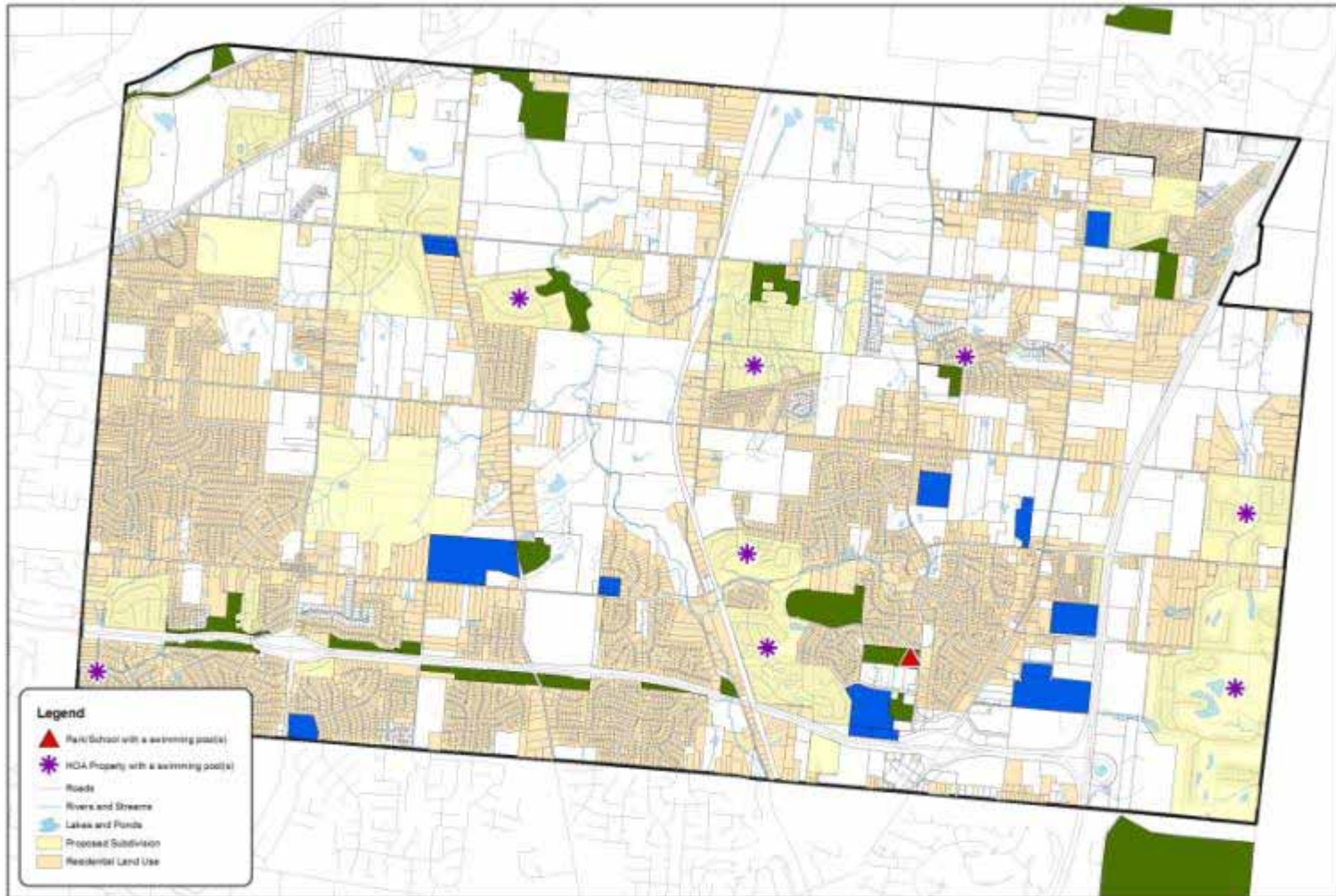
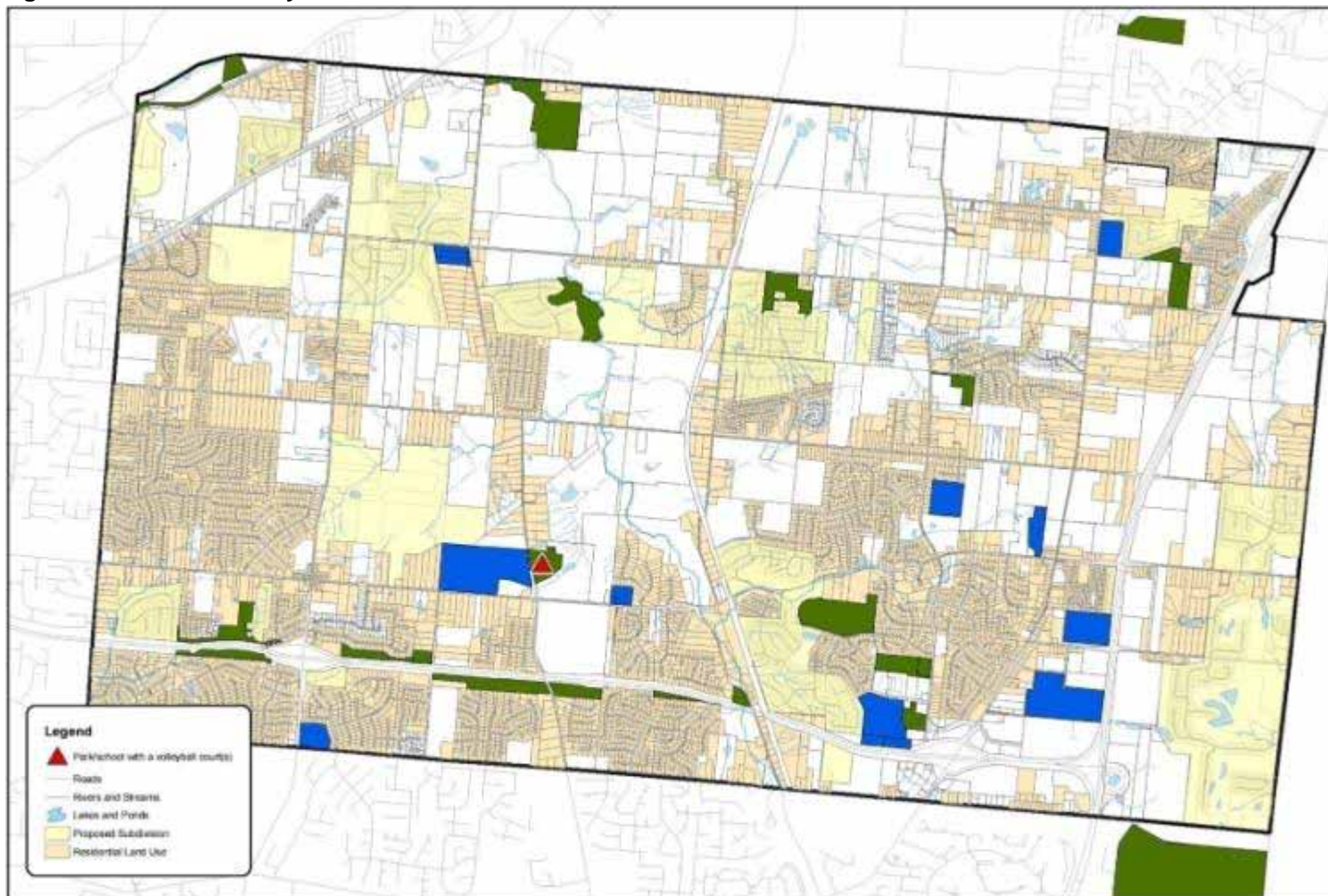
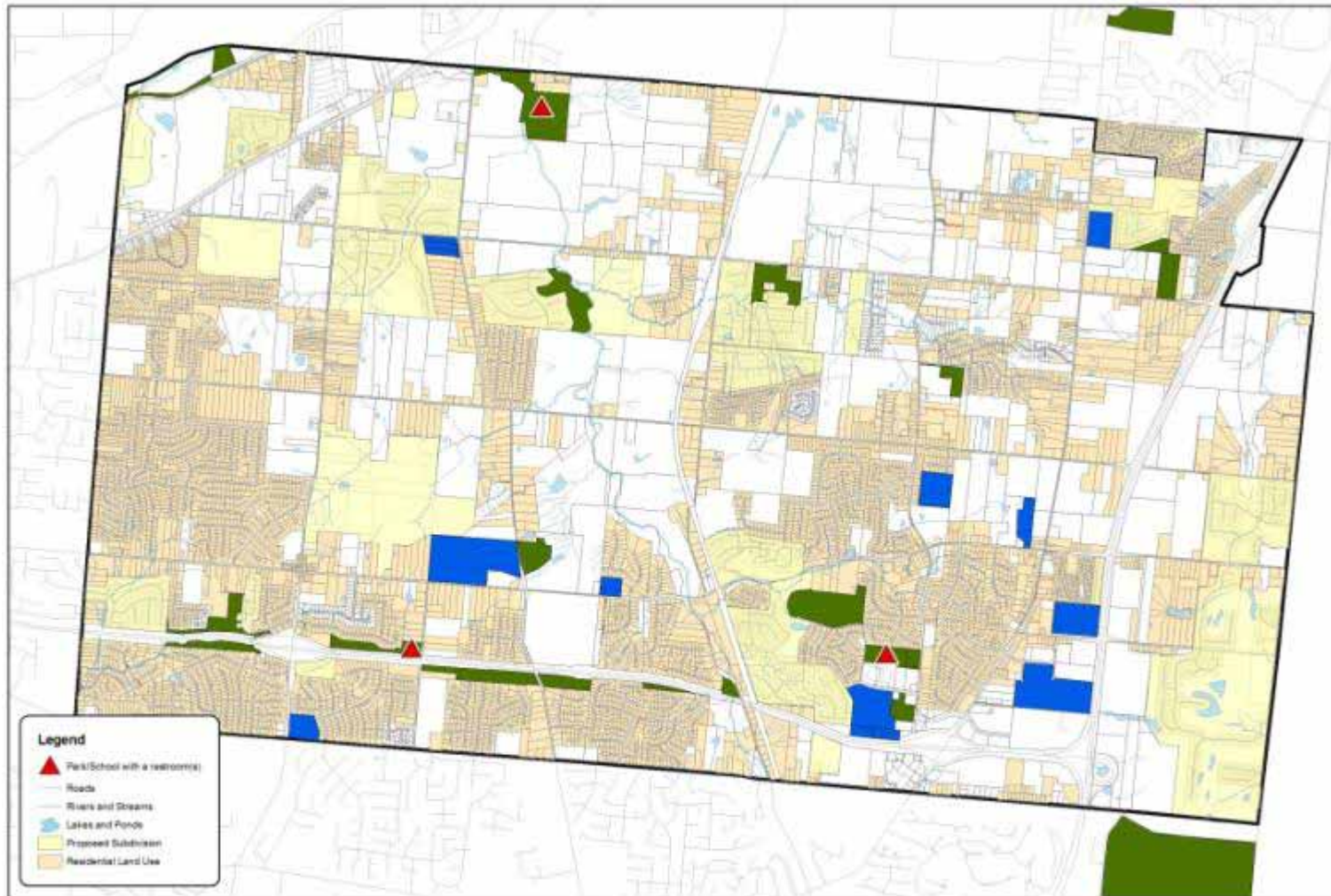


Figure 30: Outdoor Volleyball Court Locations



0 0.25 0.5 1  
feet  
January 7, 2009

Figure 31: Parks with Restrooms Locations



0 0.25 0.5 1 Miles February 3, 2009

### **E. Citizens Served Per Park Acre**

The park and recreation inventory tables indicate developed park land. This information is also included in Table 12 for the total Park Land Level of Service Guidelines. This indicates a total of 253.74 acres of developed park land within the township. Compared to the current population of approximately 33,000 residents, there is a total of 130 citizens per park acre. The national median from a survey of 1,042 recreation departments throughout the United States indicated an average of 132 citizens per developed park acre. Therefore, Liberty Township is currently served close to the national median. The difficulty becomes as the population continues to double where, at the current level of park land, the community would be served at 265 per persons per acre, which is double the national median.

The Park and Recreation Department Benchmarking includes a survey that was sent to several other departments throughout the region including townships, communities of similar size, and others. These tables are included in the appendices. The first table is the park land comparisons, which identifies that the land that is currently operated by Liberty Township results in 490 citizens per active park areas, as opposed to the average of 453 and a median of 271. Therefore, there are several more people per active park acre. This is primarily because most of the park land in the township is passive and does not provide many of the active facilities.

### **F. Public Workshops**

A complete summary of the public workshop, which was held at the beginning of the master plan process, is included in Appendix A. Other public workshops were held throughout the process to present findings for the public input process and obtain additional information from residents.

Two public open houses were held on February 18 and 26, 2009 to allow the public to review and discuss the master plan. The public workshop at the beginning of the process asked people where they currently go for park and recreation, what they like about Liberty Township Parks, what they do not like or what is missing from the parks and recreation or what can be improved, and finally what is their vision for the future of parks and recreation. The 30 people in attendance visit a variety of the parks within the township, but also attend parks and facilities in West Chester, the VOA Park, Smith Park in Middletown, and other parks. The main features that they liked about the township parks are that they are clean, free, close to home, safe, and family oriented. A wide variety of suggestions of items that are missing or could be improved were presented including a need for a variety of new facilities to compliment what they already have. Their vision included the following key elements, which are described in more detail in the appendix.

1. Trails with connectivity throughout the township.
2. Awareness of the parks through websites, calendar, signage, etc.

3. Park security.
4. Better funding for more parks and recreation system.
5. New facilities and fields are needed for organized sports.
6. Nature and history education.
7. Multi-use facilities.
8. Pathways or sidewalks on every street.
9. Natural and peaceful areas.
10. Interactive water features.
11. Amphitheater.
12. Multi-purpose fields.
13. Open space should be provided for unorganized sports and area that is dedicated and preserved as open space with wooded areas.
14. More activities should be provided including nature programs, dog park, disc golf, handicap accessible activities and facilities, historical events and programs, and education gardens.
15. Destination parks should be provided to draw people into the community.

### **G. Master Plan Steering Committee Vision Exercise**

1. Mid-way through the process of developing this Master Plan, the Consultants met with the Steering Committee and went through an exercise to identify the Committee Member's vision for the future of parks and recreation in the township.
2. The following are the items that are included in the vision:
  - a. Residents of all ages and abilities (physical and financial) can go to play and exercise, relax, and enjoy nature within the township.
  - b. Ability to interact with the environment.
  - c. Foster and enhance nature education for our children.
  - d. Physical health of the community is enhanced by the green space.
  - e. Property values and quality of life are improved in the township.
  - f. Collaboration and partnerships to maximize the efficiency and opportunities for parks and recreation.
  - g. Community access to parks for all residents.
  - h. Preserve the past and plan for the future.
  - i. Create destinations that nurture friends and family.
  - j. Unique and scenic park and recreation opportunities.

- k. Sustainable financially.
- l. Foster appreciation of nature.
- m. Get people active and outside.
- n. A walkable community.
- o. Engage residents to volunteer in activities.
- p. Foster community identity.
- q. Developers provide usable park land.
- r. Adequate parking and support facilities at all parks.
- s. Appropriate design to accommodate all ages and abilities.
- t. Use grants and comprehensive funding strategies to implement the plan.
- u. A wide variety of active and passive activities available.
- v. Use “Friends” organizations to support implementation of the Master Plan.
- w. Special events generate revenue such as sponsorships and vendors.
- x. Partnerships with MetroParks of Butler County.
- y. Economy of scale
- z. Efficient and economical as possible.
- aa. Provide services and facilities that other organizations will not provide such as the YMCA, private fitness clubs, etc.
- bb. Planned native planting program such as a tree inventory for all township owned park land.
- cc. Identify resources that are unknown such as a private arboretum, the state listed hickory tree, etc.
- dd. Land for both active and passive parks.
- ee. Expand parks in the western portion of the township to allow for good geographical distribution of parks.
- ff. Awareness, marketing, and communications are improved.

### **H. Stakeholder Meetings**

1. The Master Plan team met with several organizations and staff members related to the delivery of park and recreation services in Liberty Township and the immediate area. The groups included the following organizations:
  - a. Athletic Organizations

- (1) LSO
  - (2) Lakota Thunderbirds Basketball
2. Partner Organizations
    - a. MetroParks of Butler County
    - b. Lakota YMCA
    - c. Lakota School District
    - d. Partners in Prime (senior citizens group)
  3. Other Organizations
    - a. Boy Scouts
    - b. Girl Scouts
    - c. OSU Extension
    - d. 4-H
    - e. Township including the Services Director, Human Resources Director, the Planning Department staff.

Each of these groups was asked to identify their current relationship to Liberty Township, specific information about the organization and participation in programs, and ways in which parks and recreation could be improved. Ultimately, each group was asked for their vision for the future of parks and recreation in Liberty Township. Some of the key elements that were discussed in the vision items include the following:

1. Large parks near population centers
2. Community gardens
3. Farm land preservation
4. Interconnected trails and a walkable community
5. Nature programs
6. Senior facility in Liberty Township
7. Basketball courts
8. Athletic fields with:
  - a. Better field maintenance
  - b. Lighted baseball and soccer fields
  - c. Additional fields
9. Camping locations
10. Community service projects

More specific information and summaries from these stakeholder groups can be found in Appendix A.

### **I. Community Attitude and Interest Survey**

#### **1. Overview of the Methodology**

Liberty Township conducted a Community Attitude and Interest Survey during the spring of 2008 to establish priorities for the future improvement of parks and recreation facilities, programs and services within the community. The survey was designed to obtain statistically valid results from households throughout Liberty Township. The survey was administered by a combination of mail and phone.

Leisure Vision worked extensively with Liberty Township officials, as well as members of the Brandstetter Carroll project management team in the development of the survey questionnaire. This work allowed the survey to be tailored to issues of strategic importance to effectively plan the future system. The survey instrument and cover letter are included in Appendix C.

Leisure Vision mailed surveys to a random sample of 2,000 households in Liberty Township. Approximately three days after the surveys were mailed, each household that received a survey also received an electronic voice message encouraging them to complete the survey. In addition, about two weeks after the surveys were mailed, Leisure Vision began contacting households by phone, either to encourage completion of the mailed survey or to administer the survey by phone.

The goal was to obtain a total of at least 400 completed surveys. This goal was accomplished, with a total of 443 surveys having been completed. The results of the random sample of 443 households have a 95% level of confidence with a precision of at least +/-4.7%.

#### **2. National Benchmarking**

Since 1998, Leisure Vision (a division of ETC Institute) has conducted household surveys for needs assessments, feasibility studies, customer satisfaction, fees and charges comparisons, and other parks and recreation issues in more than 200 communities in over 35 states across the country.

The results of these surveys has provided an unparalleled data base of information to compare responses from household residents in client communities to "National Averages" and therefore provide a unique tool to "assist organizations in better decision making." The National Benchmarking summary is included in Appendix D. Selected information is included on the charts in this section.

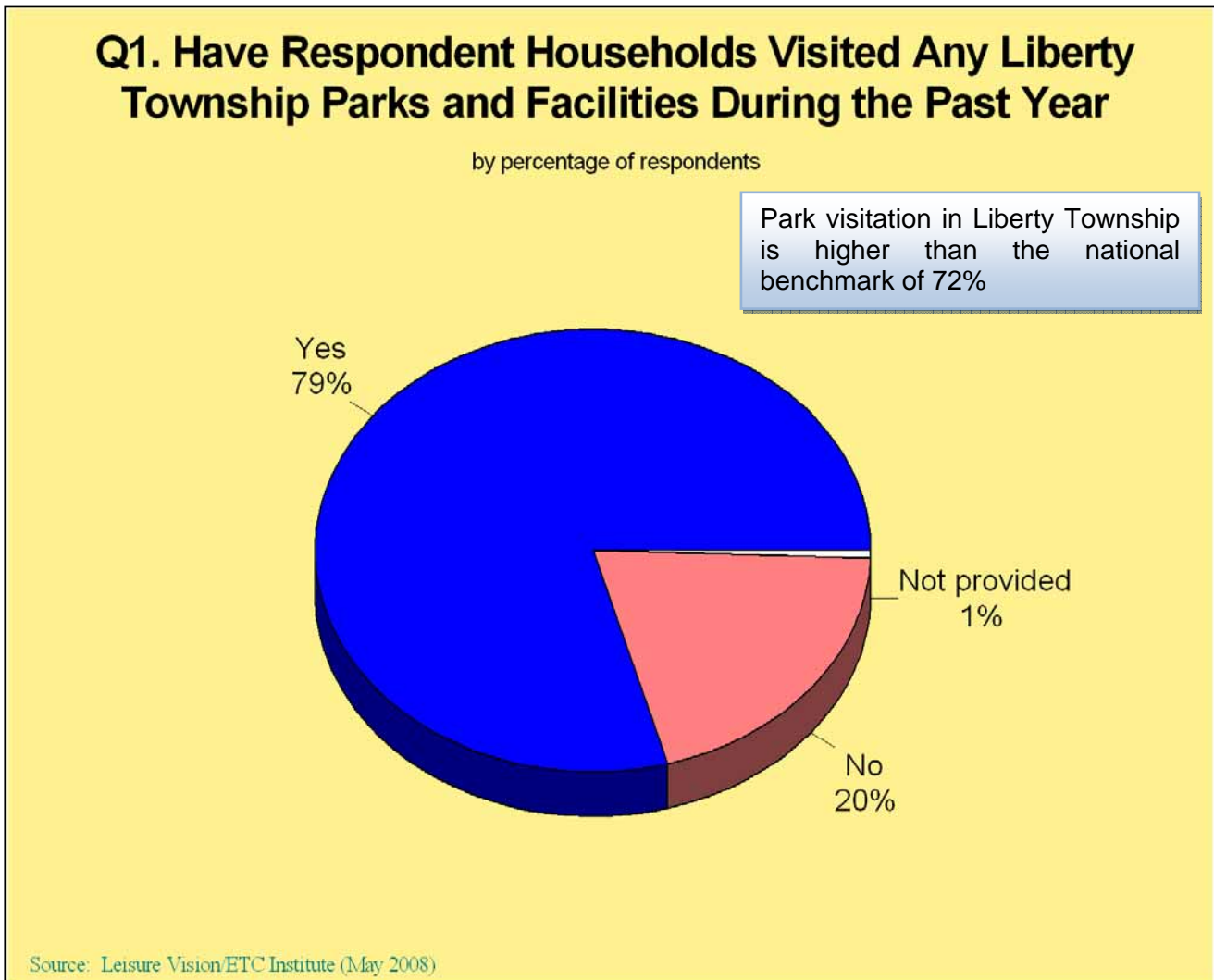
**J. Survey Results**

The following pages summarize major survey findings:

1. Have Respondent Households Visited Parks and Facilities During the Past Year.

Respondents were asked to indicate if they or members of their household have visited any Liberty Township parks and facilities during the past 12 months. The following summarizes key findings:

- Seventy-nine percent (79%) of respondents **have** visited Liberty Township parks and facilities during the past year.



### 2. How Often Respondent Households Visited Parks and Facilities During the Past Year

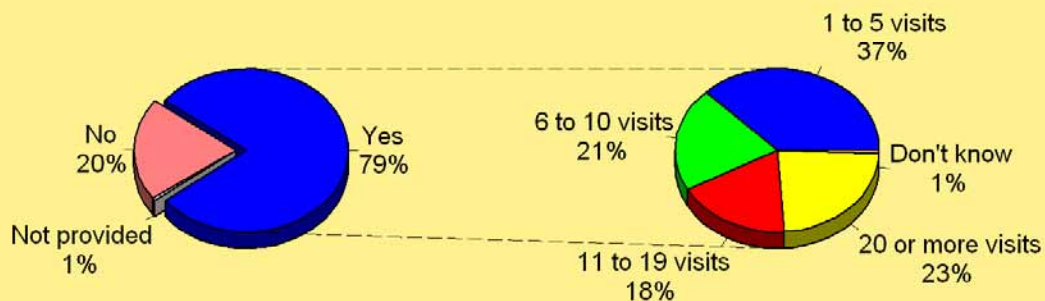
Respondent household that have visited Liberty Township parks and facilities during the past year were asked to indicate how often they visited parks and facilities during that time. The following summarizes key findings:

- Of the 79% of respondent households that have visited Liberty Township parks and facilities during the past year, 62% have visited parks and facilities at least 6 times. In addition, 23% have visited parks/facilities 20 or more times during the past year.

## Q1. Have Respondent Households Visited Any Liberty Township Parks and Facilities During the Past Year

by percentage of respondents

### Q1a. How Often Respondent Households Visited Liberty Township Parks and Facilities During the Past Year



Source: Leisure Vision/ETC Institute (May 2008)

3. Rating of the Physical Condition of All Parks and Facilities Visited

Respondent household that have visited Liberty Township parks and facilities during the past year were asked to rate the physical condition of all the parks and facilities they have visited. The following summarizes key findings:

- Of the 79% of respondent households that have visited Liberty Township parks and facilities during the past year, 85% rated parks and facilities as either excellent (22%) or good (63%). In addition, 13% of respondents rated the parks/facilities as fair, and only 1% rated them as poor.

### Q1. Have Respondent Households Visited Any Liberty Township Parks and Facilities During the Past Year

by percentage of respondents

The "Excellent" rating in Liberty Township is lower than the national benchmark of 30%. Combined "Excellent" and "Good" of 85% is near the benchmark of 84%.

#### Q1b. How Respondents Would Rate the Physical Condition of All the Liberty Township Parks and Facilities They Have Visited



Source: Leisure Vision/ETC Institute (May 2008)

### 4. Participation in Programs/Events/Festivals/Parades/5K Run Over the Past 12 Months

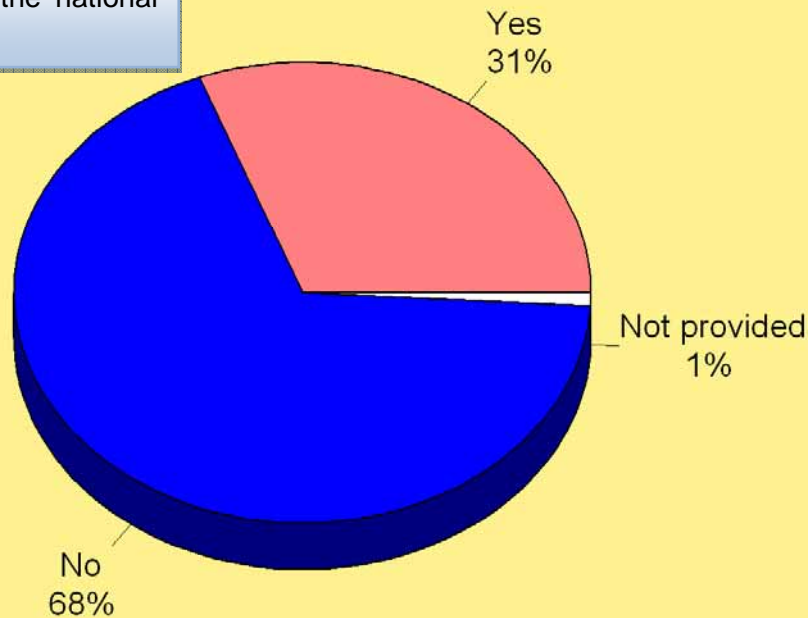
Respondents were asked to indicate if they or members of their household have participated in any programs/events/festivals/parades/5K run offered by Liberty Township over the past 12 months. The following summarizes key findings:

- Thirty-one percent (31%) of respondent households have participated in programs/events/ festivals/ parades/5K run offered by Liberty Township over the past 12 months.

### Q2. Have Respondent Households Participated in Any Programs/Events/Festivals/Parades/5K Run Offered by Liberty Township Over the Past 12 Months

by percentage of respondents

Program participation in Liberty Township is close to the national benchmark of 30%



Source: Leisure Vision/ETC Institute (May 2008)

5. Rating the Quality of Programs Participated In

Respondent households that have participated in programs/events/festivals/parades/5K run offered by Liberty Township over the past 12 months were asked to rate the quality of the programs they have participated in. The following summarizes key findings:

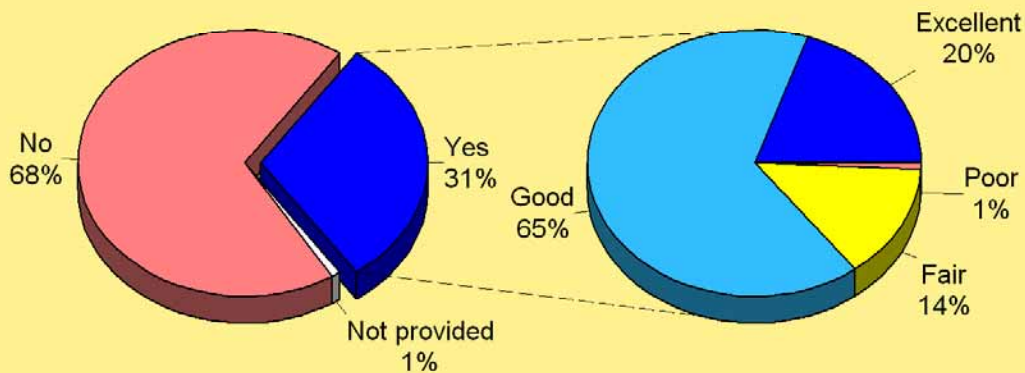
- Of the 31% of respondent household that have participated in programs/events/ festivals/parades/5K run offered by Liberty Township over the past 12 months, 85% rated the programs as either excellent (20%) or good (65%). In addition 14% rated the quality as fair and only 1% rated them as poor.

**Q2. Have Respondent Households Participated in Any Programs/Events/Festivals/Parades/5K Run Offered by Liberty Township Over the Past 12 Months**

by percentage of respondents

The "Excellent" rating in Liberty Township is lower than the national benchmark of 33%. Combined "Excellent" and "Good" of 85% is near the benchmark of 87%.

Q2a. How Respondents Would Rate the Quality of the Programs They and Members of Their Household Participated In

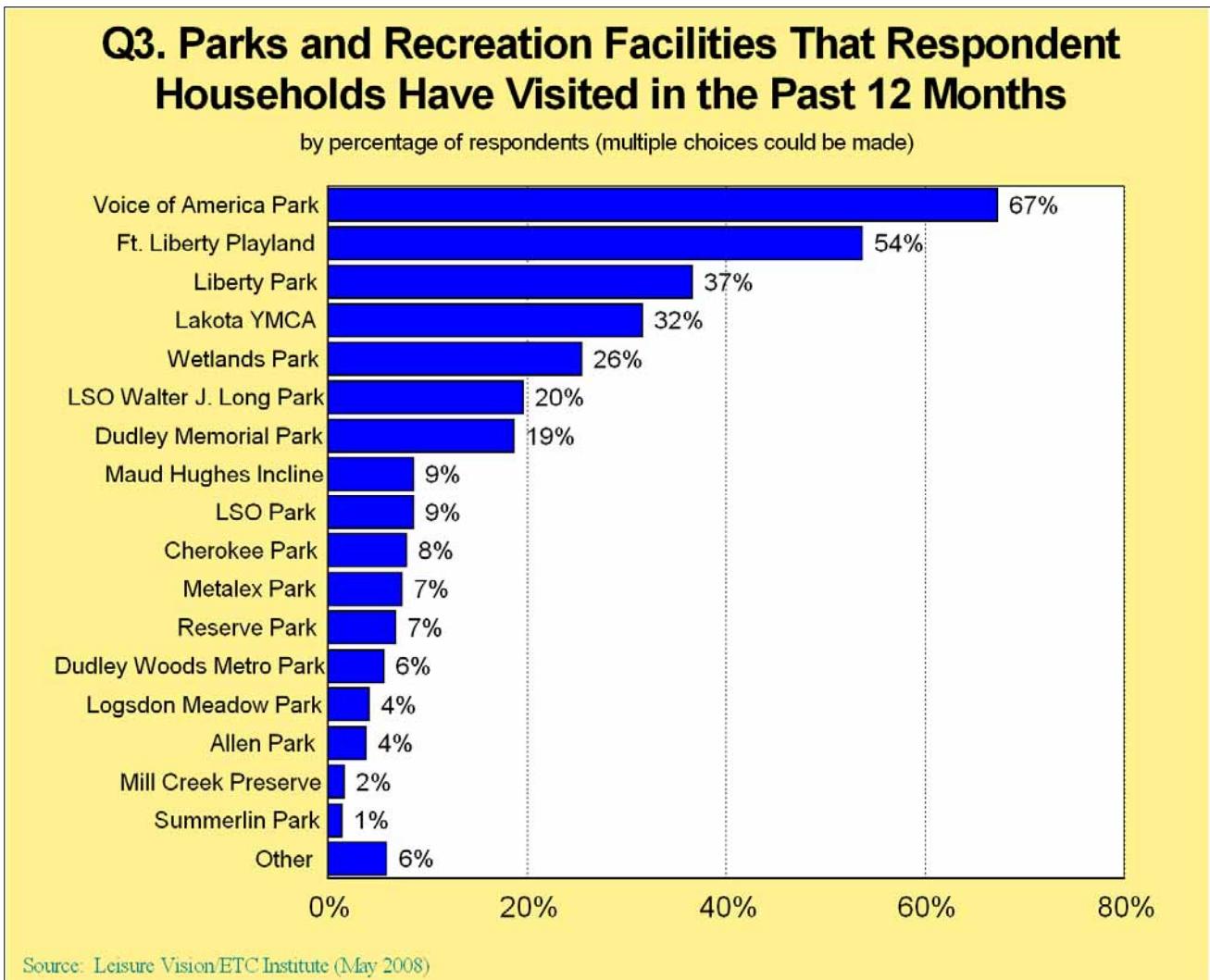


Source: Leisure Vision/ETC Institute (May 2008)

6. Parks and Recreation Facilities Visited in the Past 12 Months

From a list of 17 various parks and recreation facilities, respondents were asked to indicate all of the ones their household has visited in the past 12 months. The following summarizes key findings:

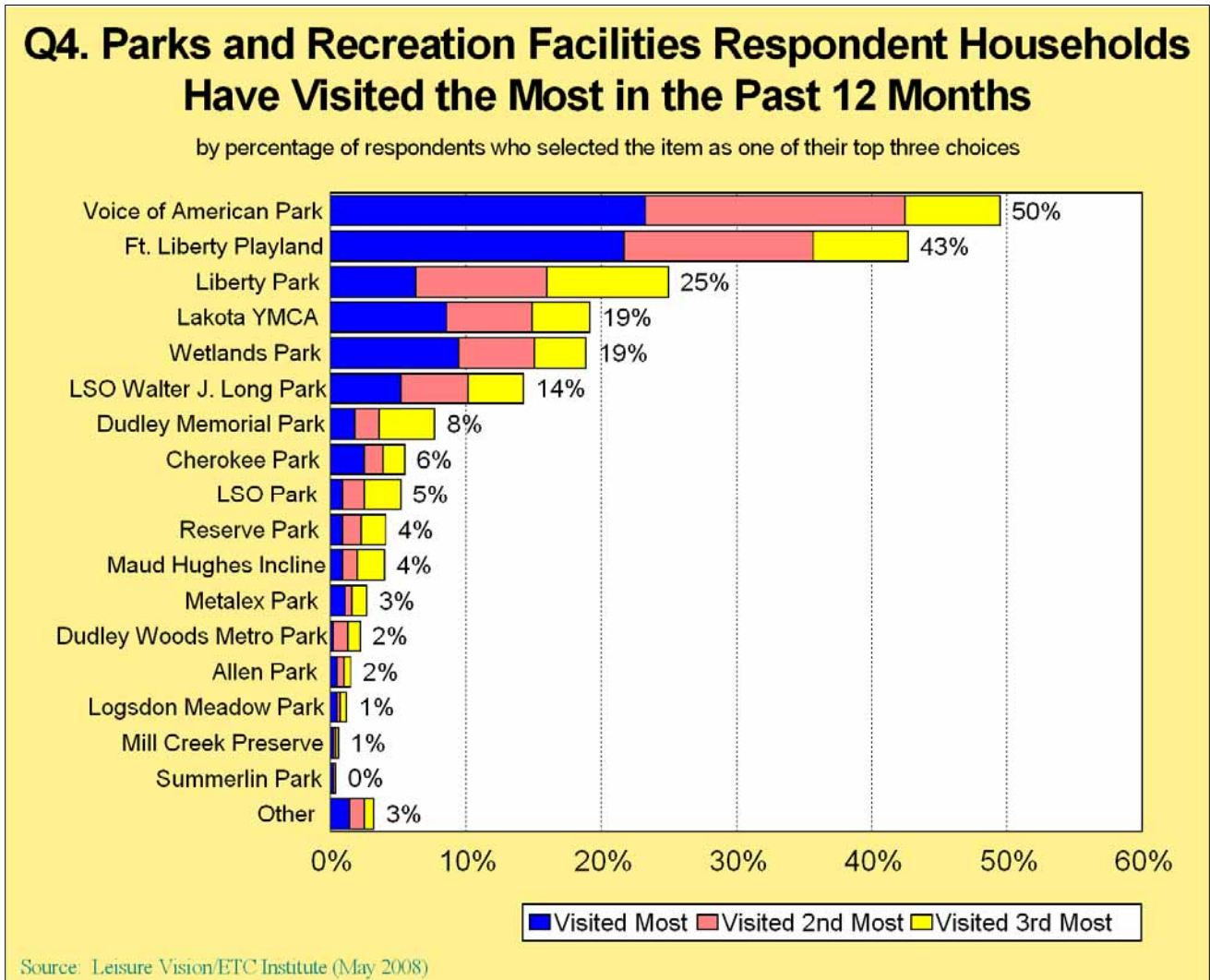
- Voice of America Park (67%) was the most frequently mentioned parks and recreation facility that respondent households have visited in the past 12 months. Other frequently mentioned parks and recreation facilities visited include: Ft. Liberty Playland (54%), Liberty Park (37%), Lakota YMCA (32%), and Wetlands Park (26%).



7. Parks and Facilities Visited the Most in the Past 12 Months

From a list of 17 various parks and recreation facilities, respondents were asked to select the three they have visited the most in the past 12 months. The following summarizes key findings:

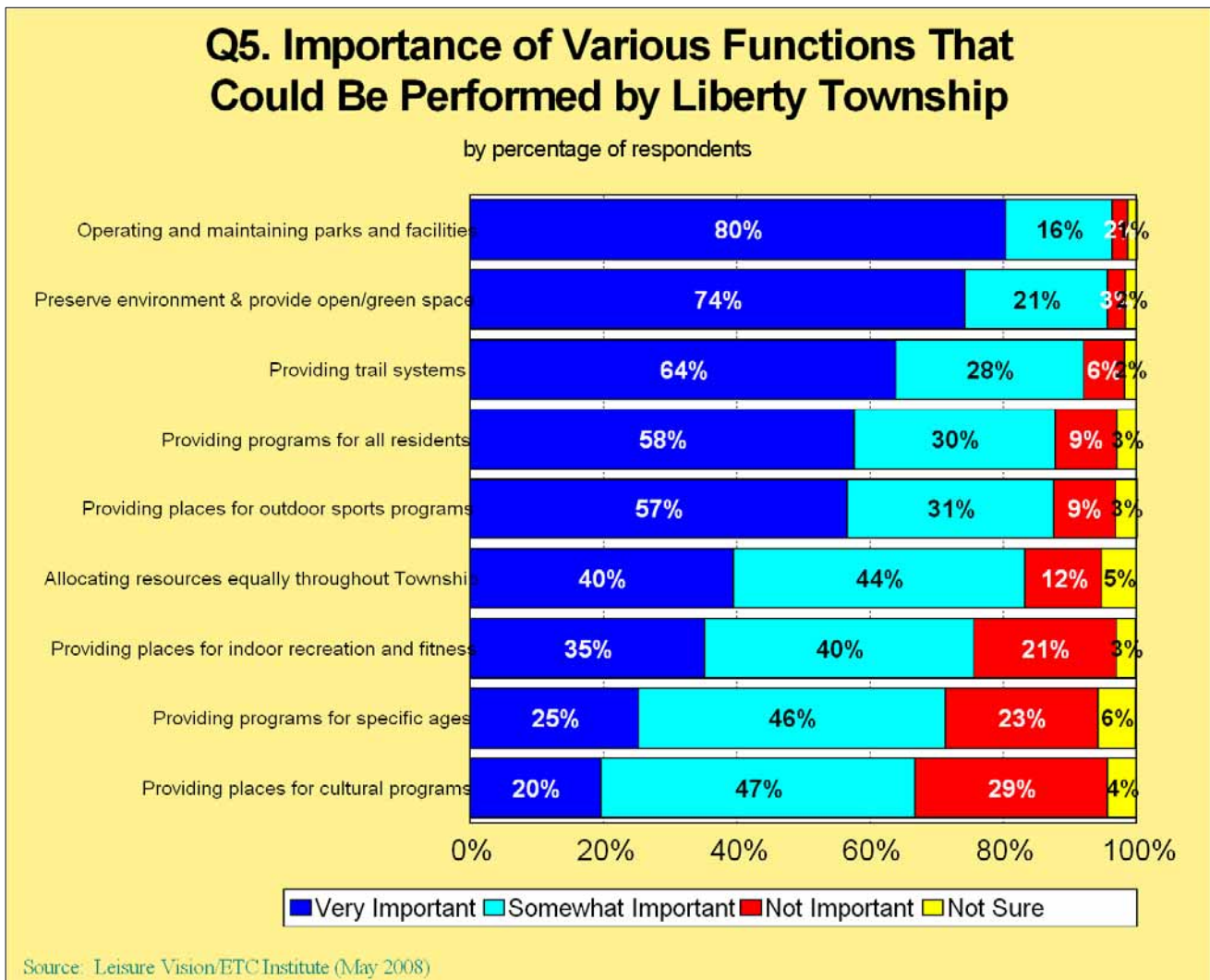
- Based on the sum of their top three choices, the parks and recreation facilities respondent households have visited the most in the past 12 months are: Voice of America Park (50%), Ft. Liberty Playland (43%), and Liberty Park (25%). It should also be noted that Voice of America Park had the highest percentage of respondents select it as their first choice as the park/facility their household has visited the most in the past 12 months.



8. Importance of Various Functions That Could Be Performed by Liberty Township

From a list of nine functions that could be performed by Liberty Township, respondents were asked to rate the importance of each function. The following summarizes key findings:

- The functions that the highest percentage of respondents rated as very important are: operating and maintaining parks and facilities (80%), preserving the environment and providing open space/green space (74%) and providing trails systems (64%).



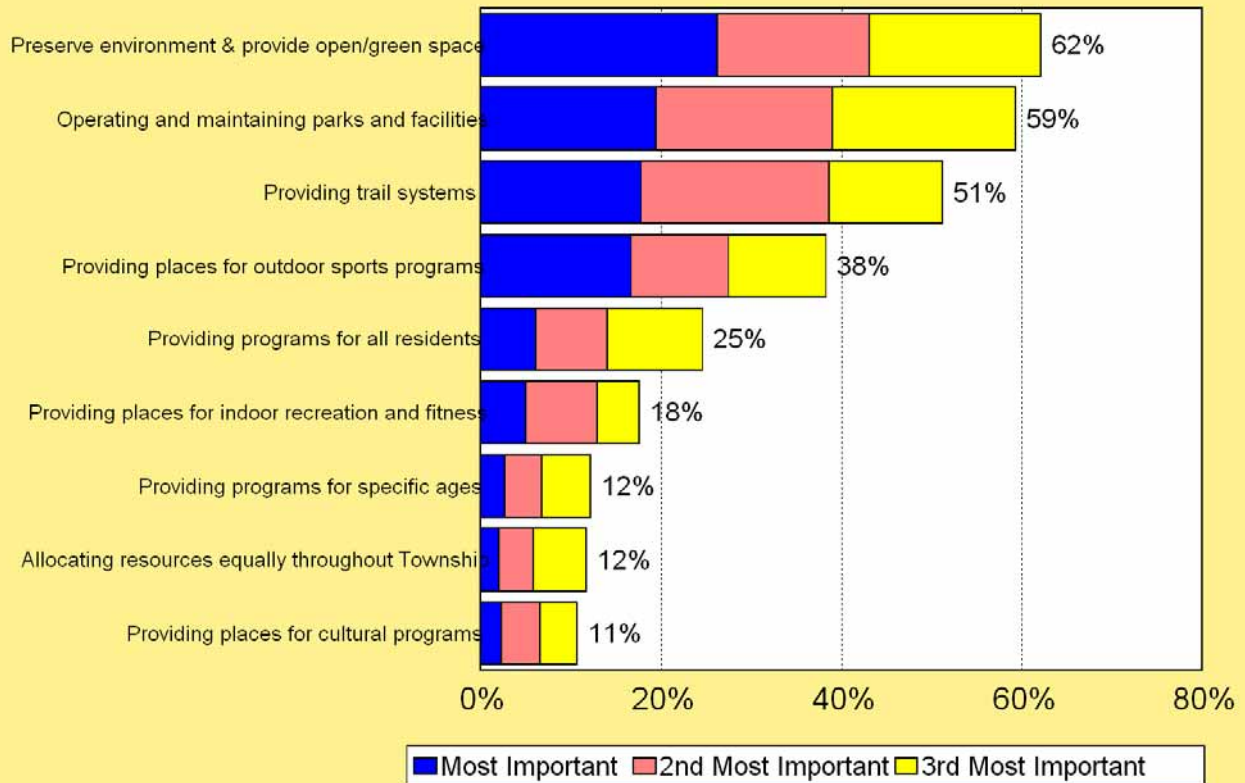
9. Most Important Functions to Provide

From a list of nine functions that could be performed by Liberty Township, respondents were asked to select the three functions they think should be most important for Liberty Township to provide. The following summarizes key findings:

- Based on the sum of their top three choices, the functions that respondents think are most important for Liberty Township to provide include: preserving the environment and providing open space/green space (62%), operating and maintaining parks and facilities (59%) and providing trails systems (51%). It should also be noted that preserving the environment and providing open/green space had the highest percentage of respondents select it as their first choice as the function they think it's most important for Liberty Township to provide.

### Q6. Functions Respondents Think Are Most Important for Liberty Township to Provide

by percentage of respondents who selected the item as one of their top three choices

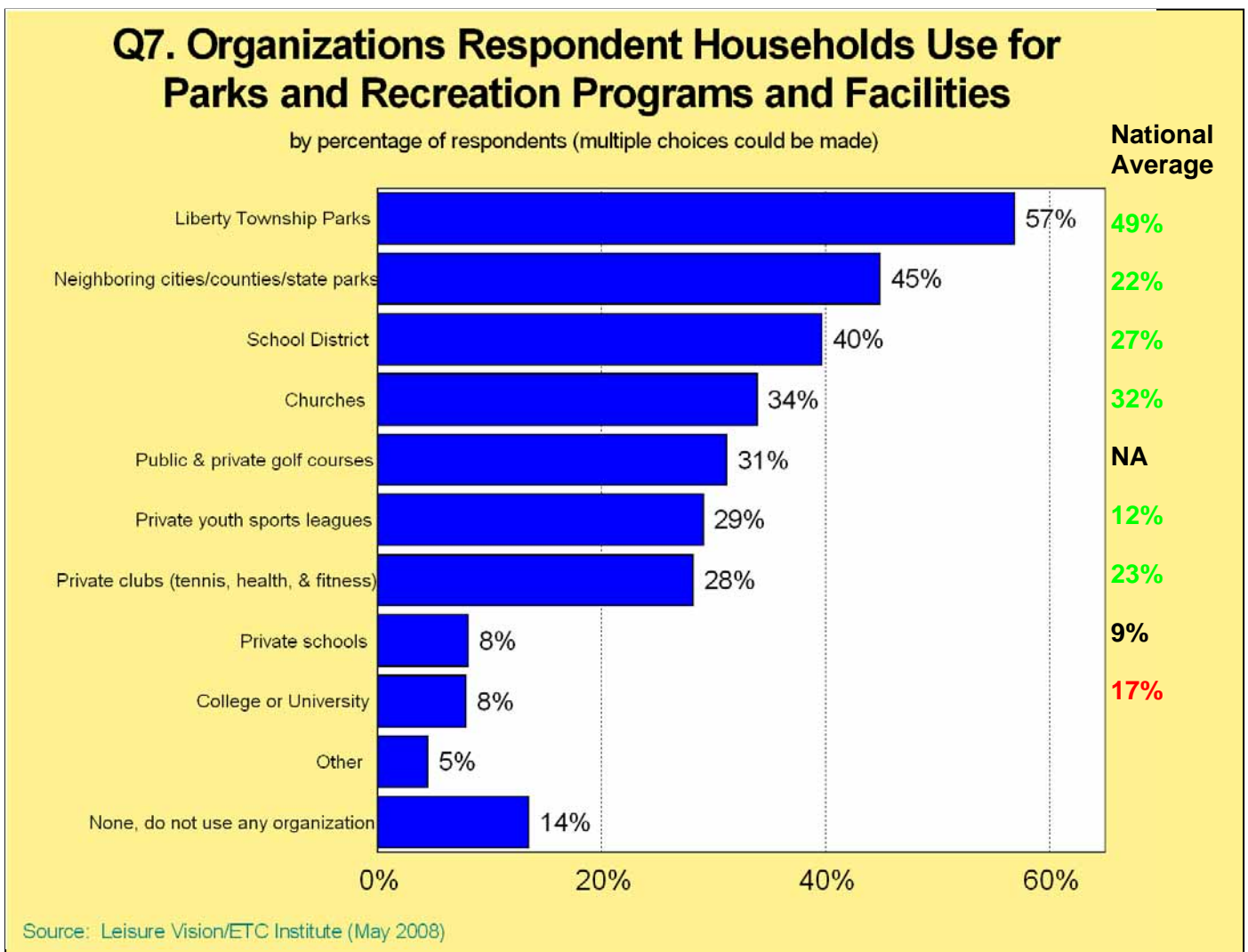


Source: Leisure Vision/ETC Institute (May 2008)

10. Organizations Used for Parks and Recreation Programs and Facilities

From a list of nine options, respondents were asked to indicate all of the organizations their household uses for parks and recreation programs and facilities. The following summarizes key findings:

- The organizations used by the highest percentage of respondent household for parks and recreation programs and facilities are: Liberty Township (57%), neighboring cities/counties/state parks (45%), school district (40%), churches (34%), and public and private golf courses (31%).



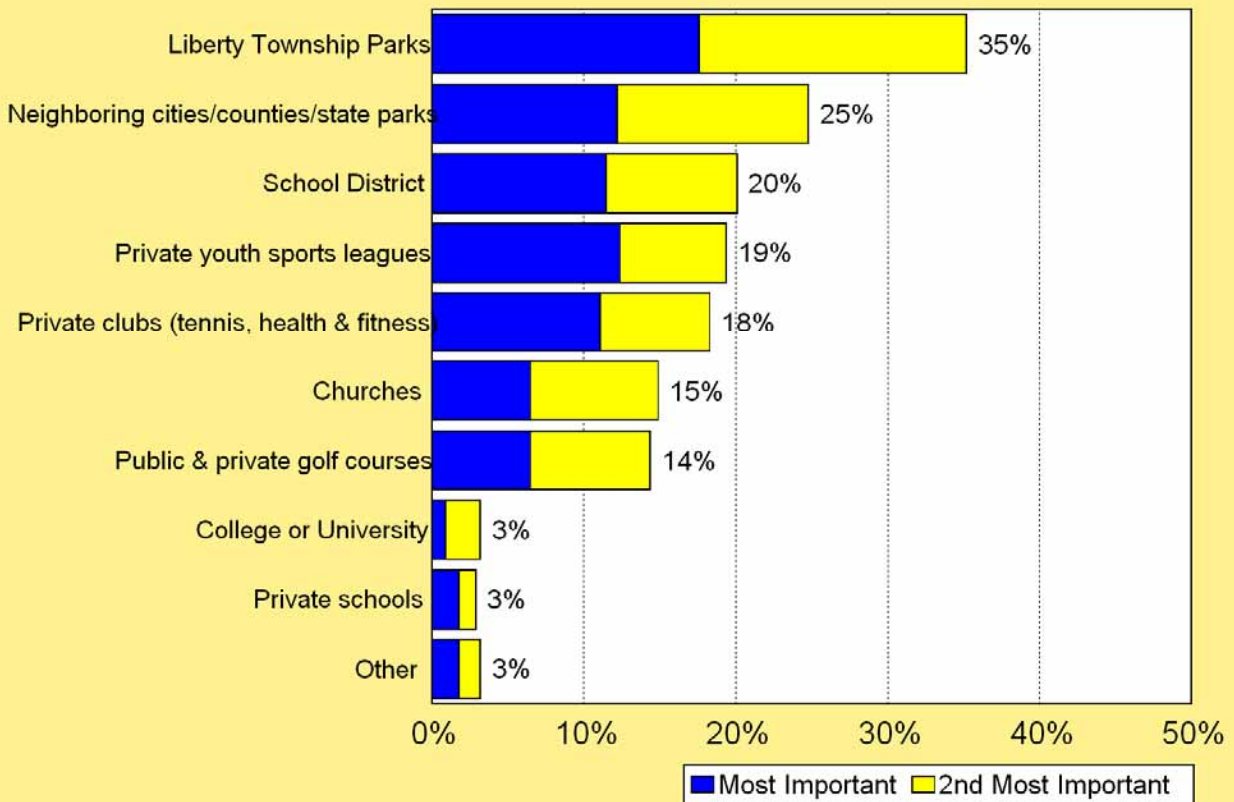
11. Organizations Used the Most for Parks and Recreation Programs and Facilities

From a list of nine options, respondents were asked to indicate select the two organizations their household uses the most for parks and recreation programs and facilities. The following summarizes key findings:

- Based on the sum of their top two choices, the organizations that respondent households use the most for parks and recreation programs and facilities are: Liberty Township Parks (35%), neighboring cities/counties/state parks (25%) and school district (20%). It should also be noted that Liberty Township Parks had the highest percentage of respondents select it as their first choice as the organization they use the most for parks and recreation programs and facilities.

**Q8. Organizations Respondent Households Use the Most for Parks and Recreation Programs and Facilities**

by percentage of respondents who selected the item as one of their top two choices

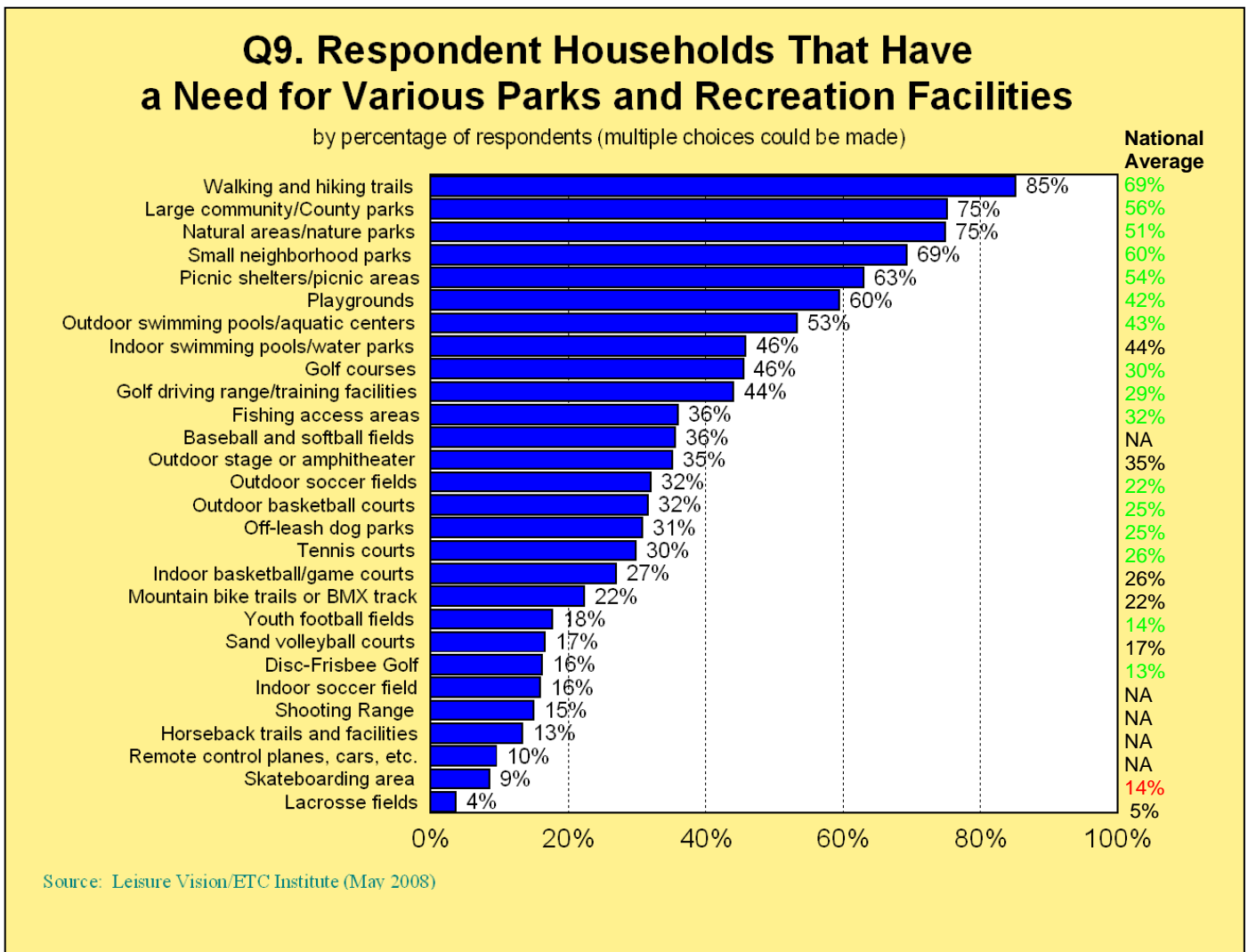


Source: Leisure Vision/ETC Institute (May 2008)

12. Need for Recreation Parks and Facilities

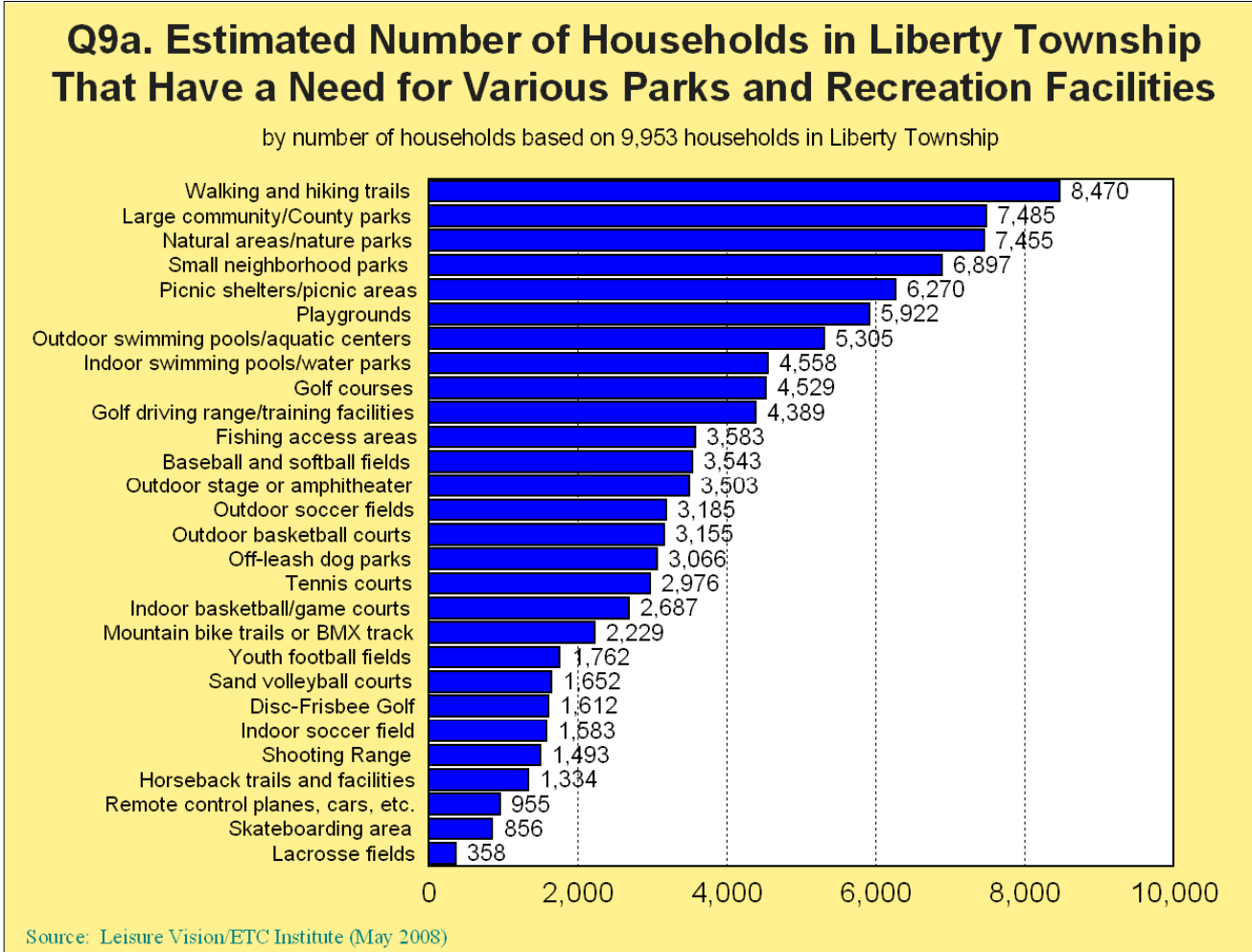
From a list of 28 recreation parks and facilities, respondents were asked to indicate all of the ones that they and members of their household have a need for. The following summarizes key findings:

- There are seven facilities that over 50% of respondent households have a need for: walking and hiking trails (85%), large community/County parks (75%), natural areas/nature parks (75%), small neighborhood parks (69%), picnic shelters/picnic areas (63%), playgrounds (60%), outdoor swimming pools/aquatic centers (53%).



13. Need For Parks and Recreation Facilities in Liberty Township

From the list of 28 parks and recreation facilities, respondents were asked to indicate which ones their household has a need for. The graph below shows the estimated number of households in Liberty Township that have a need for various parks and recreation facilities, based on 9,953 households in Liberty Township.



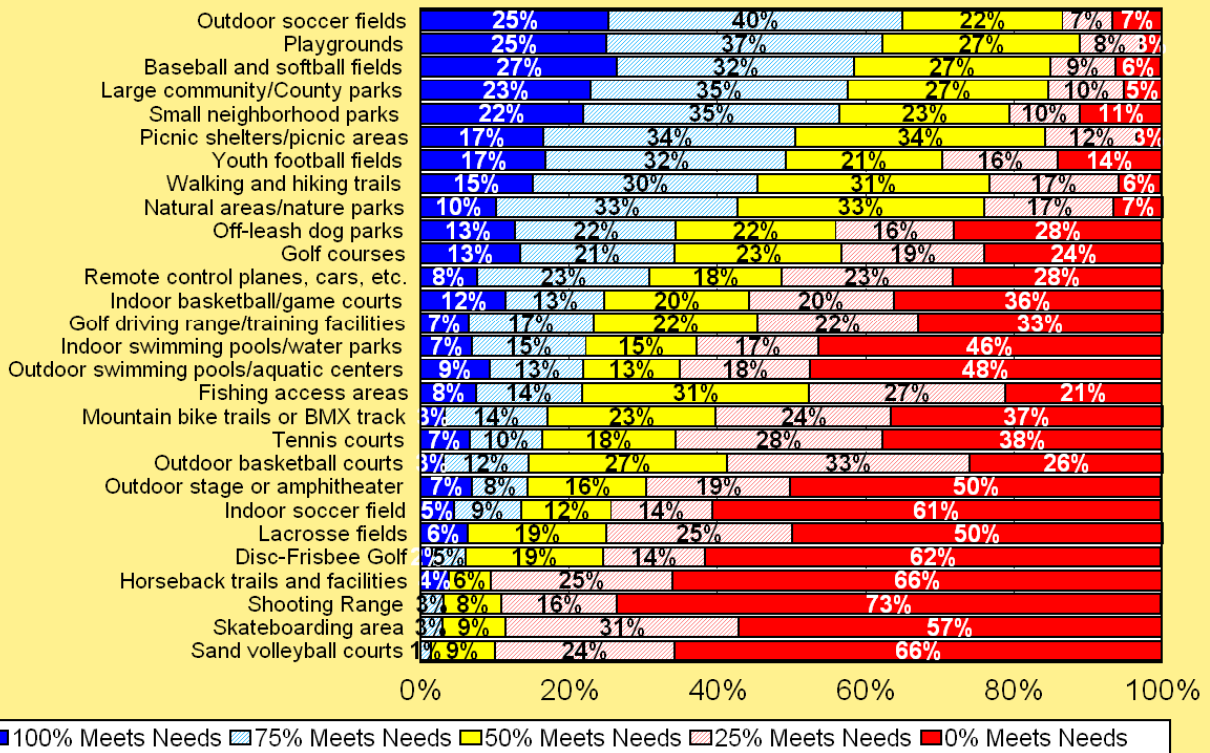
14. How Well Parks and Recreation Facilities Meet Needs

From the list of 28 parks and recreation facilities, respondent households that have a need for parks/facilities were asked to indicate how well these types of parks/facilities in Liberty Township meet their needs. The following summarizes key findings:

- For all 28 parks and facilities, less than 30% of respondents indicated that the park/facility completely meets the needs of their household.

### 9b. How Well Parks and Recreation Facilities in Liberty Township Meet the Needs of Respondent Households

by percentage of respondents with a need for facilities



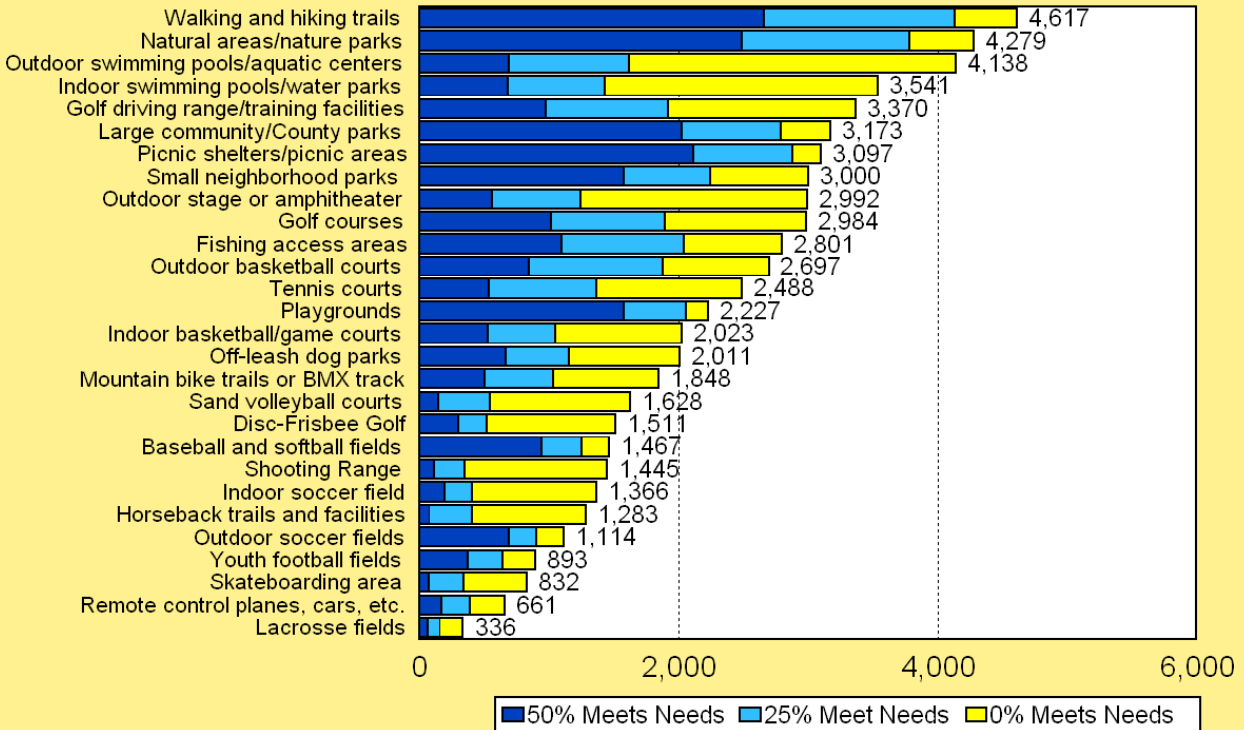
Source: Leisure Vision/ETC Institute (May 2008)

15. Liberty Township Households with Their Facility Needs Being 50% Met or Less

From the list of 28 parks and recreation facilities, respondent households that have a need for parks/facilities were asked to indicate how well these types of parks/facilities in Liberty Township meet their needs. The graph below shows the estimated number of households in Liberty Township whose needs for parks/facilities are only being 50% met or less, based on 9,953 households in the township.

**Q9c. Estimated Number of Households in Liberty Township Whose Needs for Parks and Recreation Facilities Are Only Being 50% Met or Less**

by number of households based on 9,953 households in Liberty Township

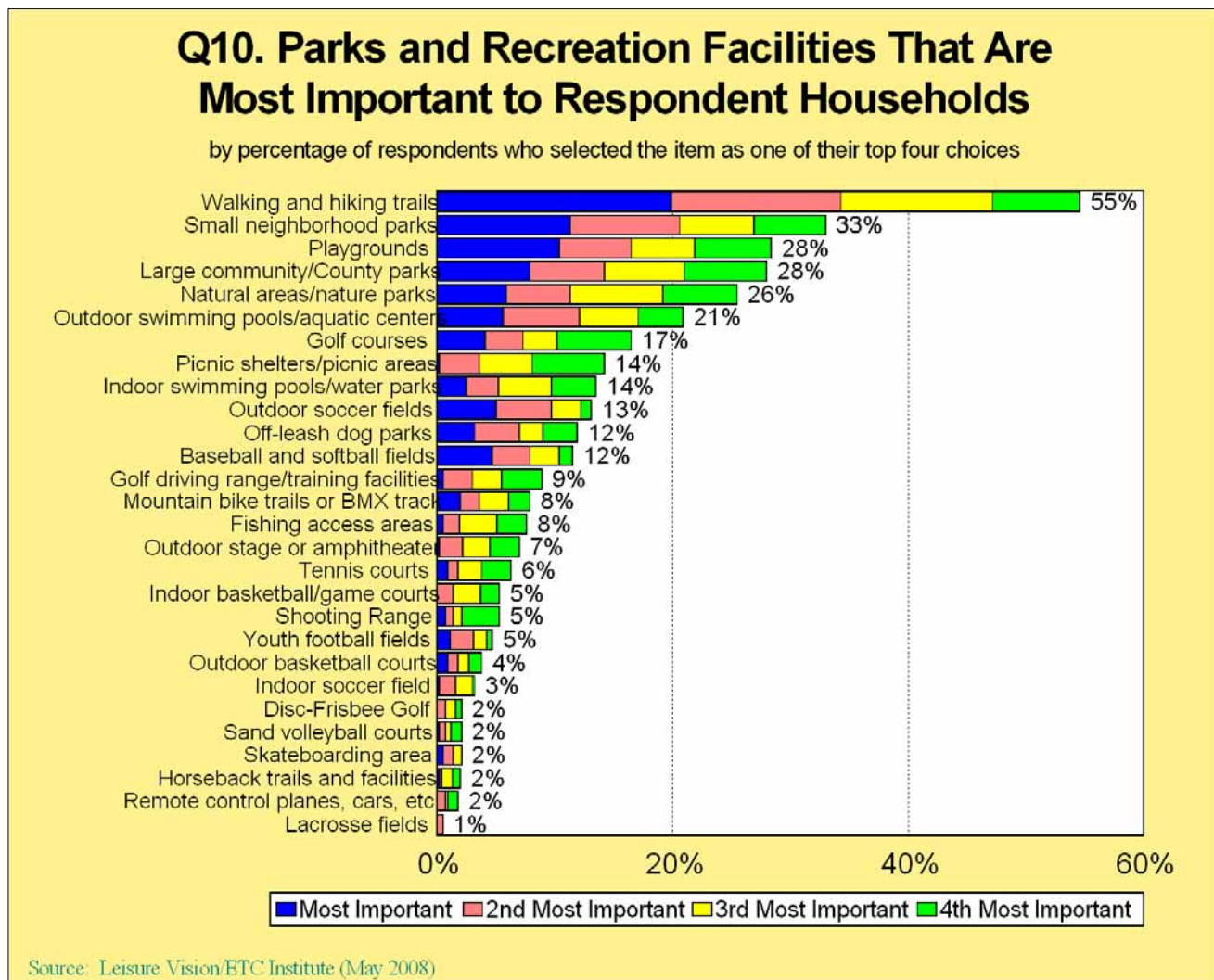


Source: Leisure Vision/ETC Institute (May 2008)

16. Most Important Parks and Recreation Facilities

From the list of 28 parks and recreation facilities, respondents were asked to select the four facilities that are most important to their household. The following summarizes key findings:

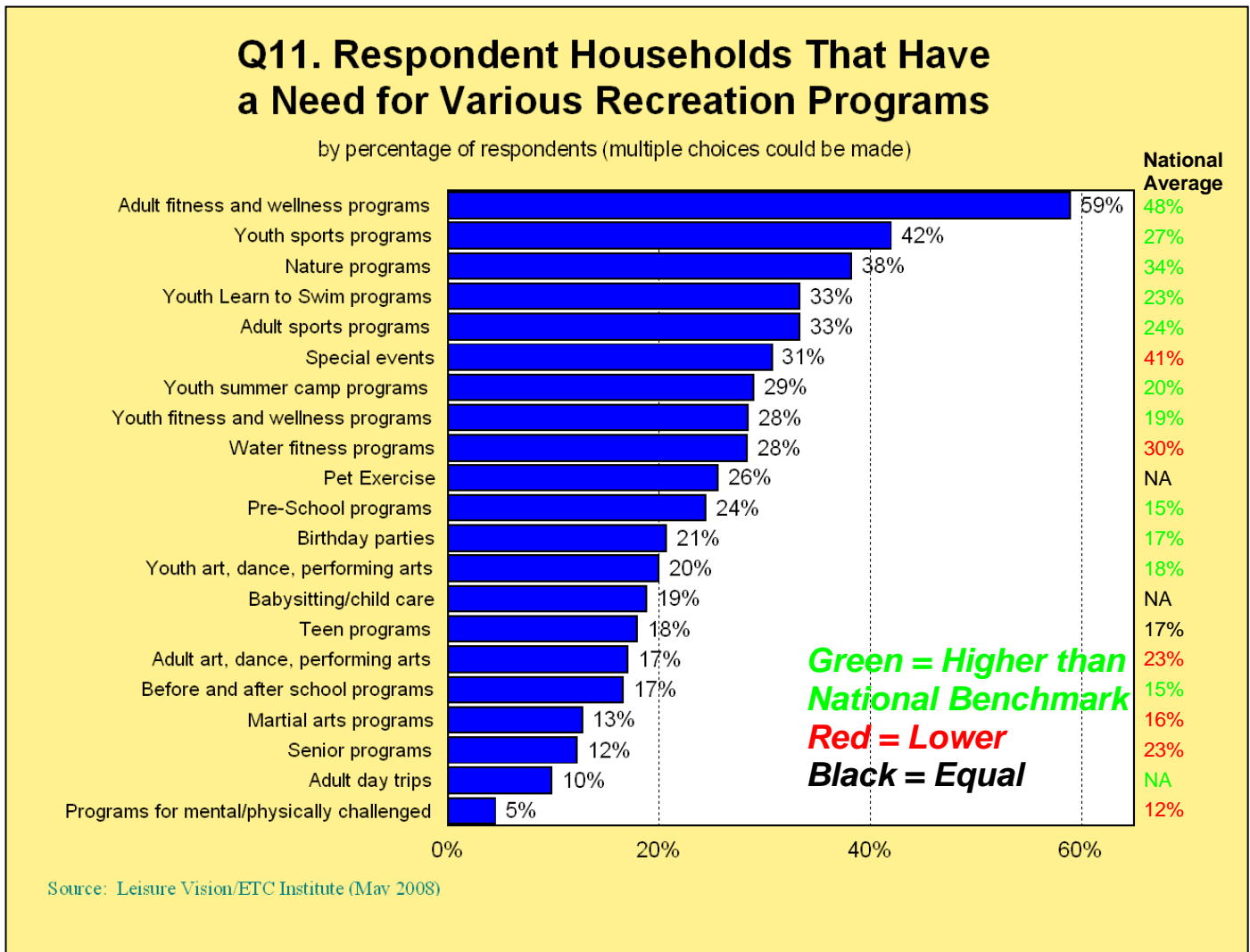
- Based on the sum of their top four choices, the parks and recreation facilities that are most important to respondent households are: walking and hiking trails (55%), small neighborhood parks (33%), playgrounds (28%), large community/County parks (28%), large community/County parks (28%), and natural areas/nature parks (26%). It should also be noted that walking and hiking trails had the highest percentage of respondents select it as their first choice as the most important park/facility.



17. Need for Recreation Programs

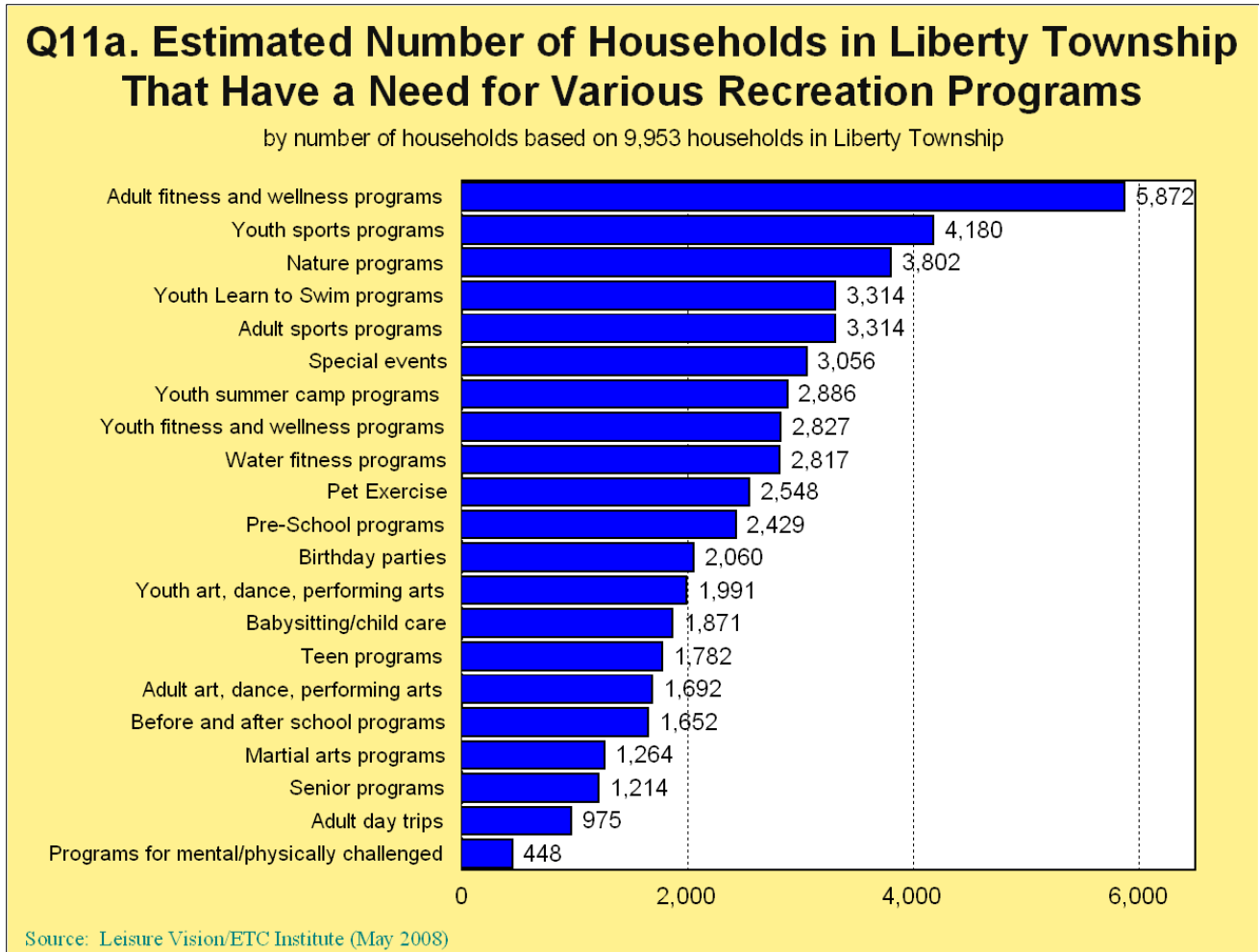
From a list of 21 recreation programs, respondents were asked to indicate all of the ones that they and members of their household have a need for. The following summarizes key findings:

- The recreation programs that the highest percentage of respondents have a need for are: adult fitness and wellness programs (59%) and youth sports programs (42%) and nature programs (38%).



18. Need for Recreation Programs in Liberty Township

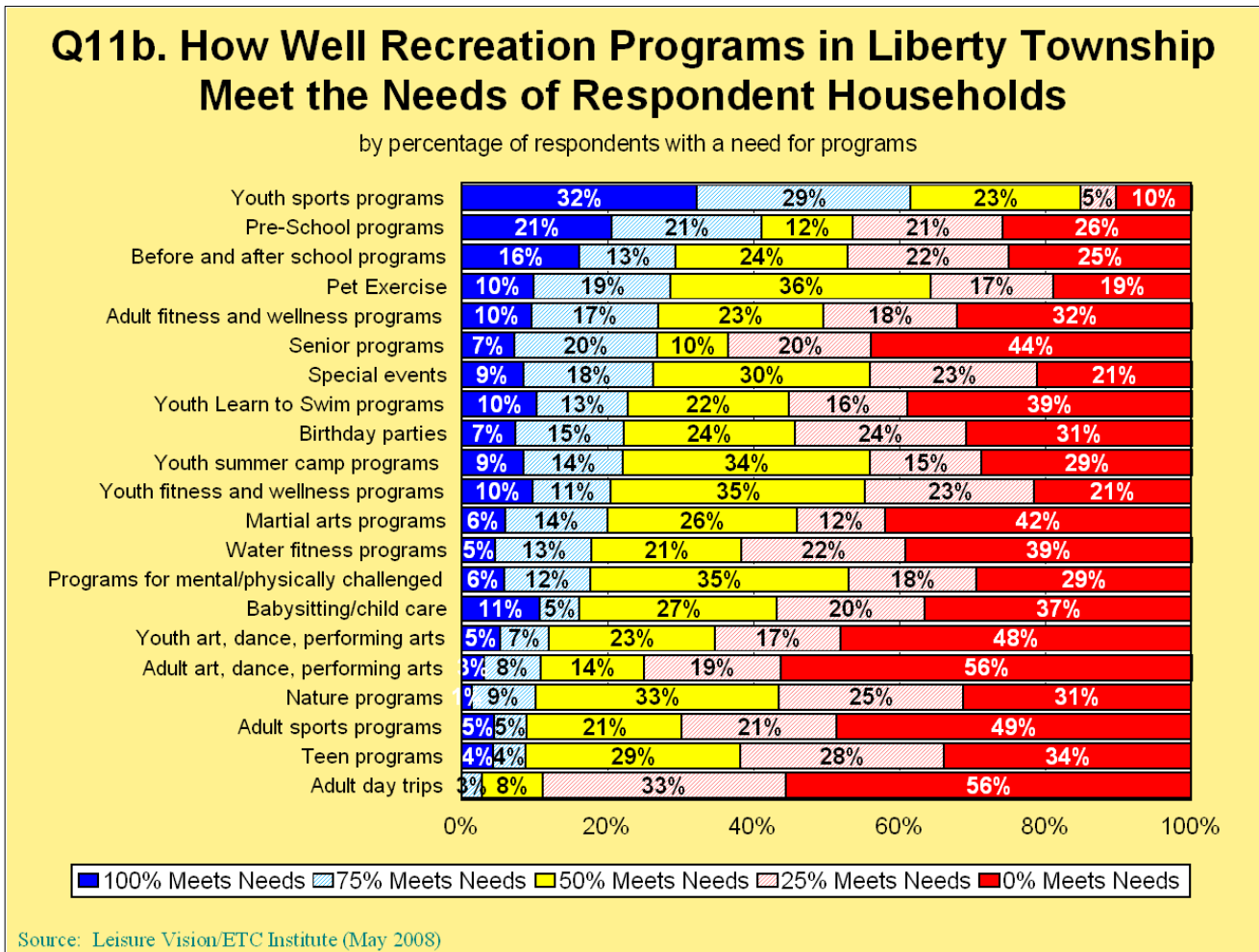
From the list of 21 recreation programs, respondents were asked to indicate which ones they and members of their household have a need for. The graph below shows the estimated number of households in Liberty Township that have a need for recreation programs, based on 9,953 households in the township.



19. How Well Recreation Programs Meet Needs

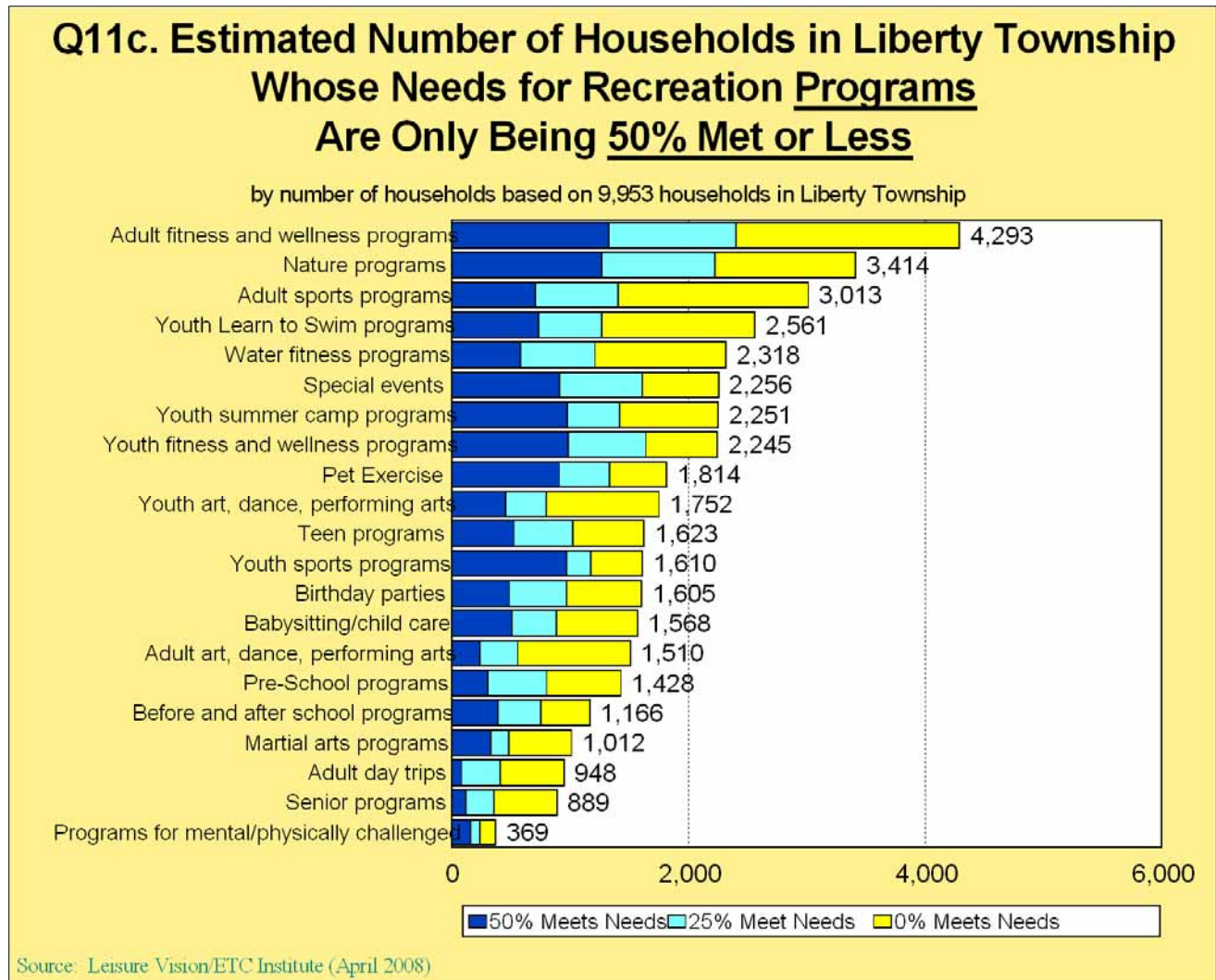
From the list of 21 recreation programs, respondent households that have a need for programs were asked to indicate how well these types of programs in Liberty Township meet their needs. The following summarizes key findings:

- For all 21 programs, less than 35% of respondents indicated that the program completely meets the needs of their household.



20. Liberty Township Households with Their Program Needs Being 50% Met or Less

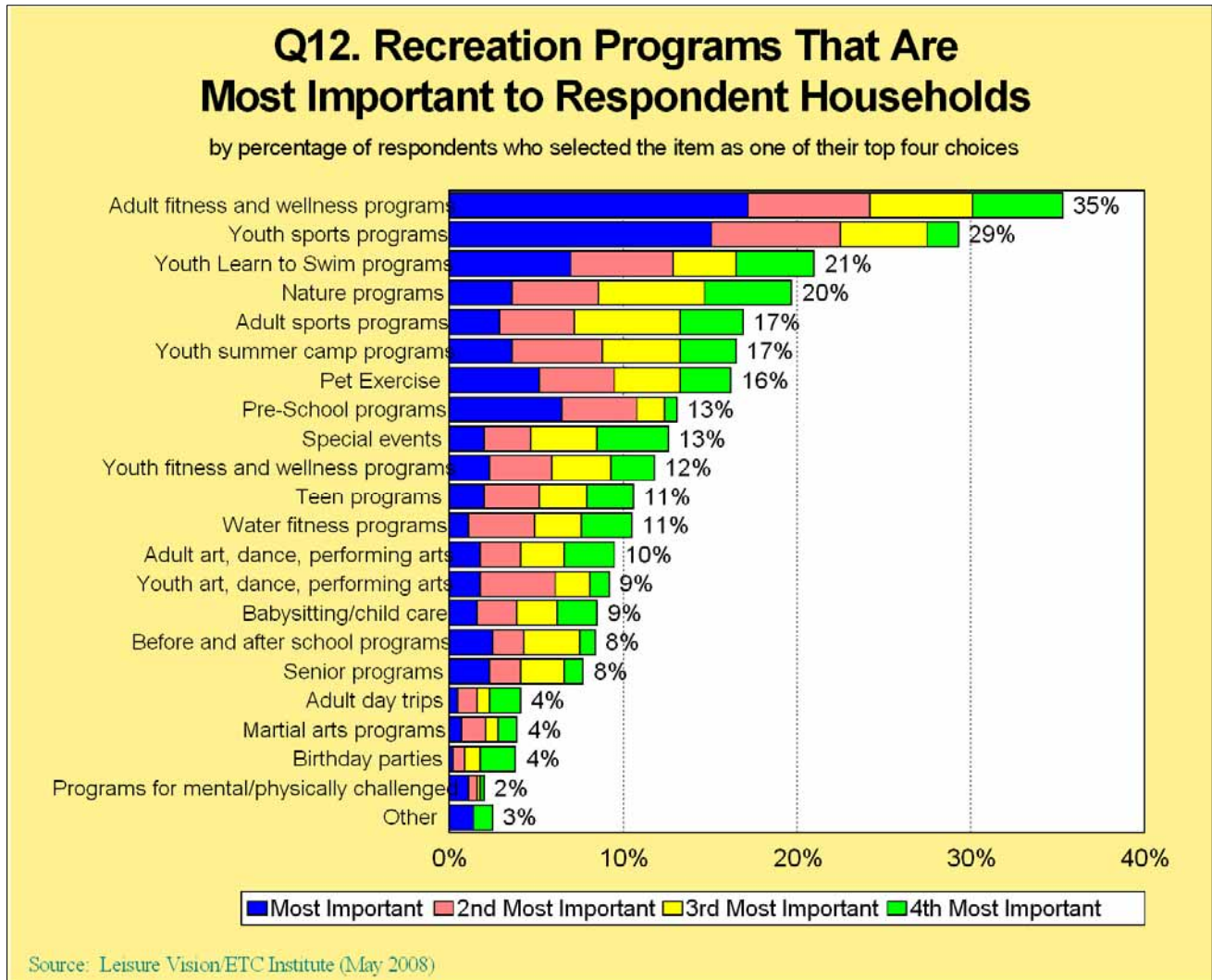
From the list of 21 recreation programs, respondent households that have a need for programs were asked to indicate how well these types of programs in Liberty Township meet their needs. The graph below shows the estimated number of households in Liberty Township whose needs for programs are only being 50% met or less, based on 9,953 households in the township.



21. Most Important Recreation Programs

From the list of 21 recreation programs, respondents were asked to select the four that are most important to their household. The following summarizes key findings:

- Based on the sum of their top four choices, the recreation programs that are most important to respondent households are: adult fitness and wellness programs (35%), youth sports programs (29%), youth Learn to Swim programs (21%), and nature programs (20%). It should also be noted that adult fitness and wellness programs had the highest percentage of respondents select it as their first choice as the most important program.



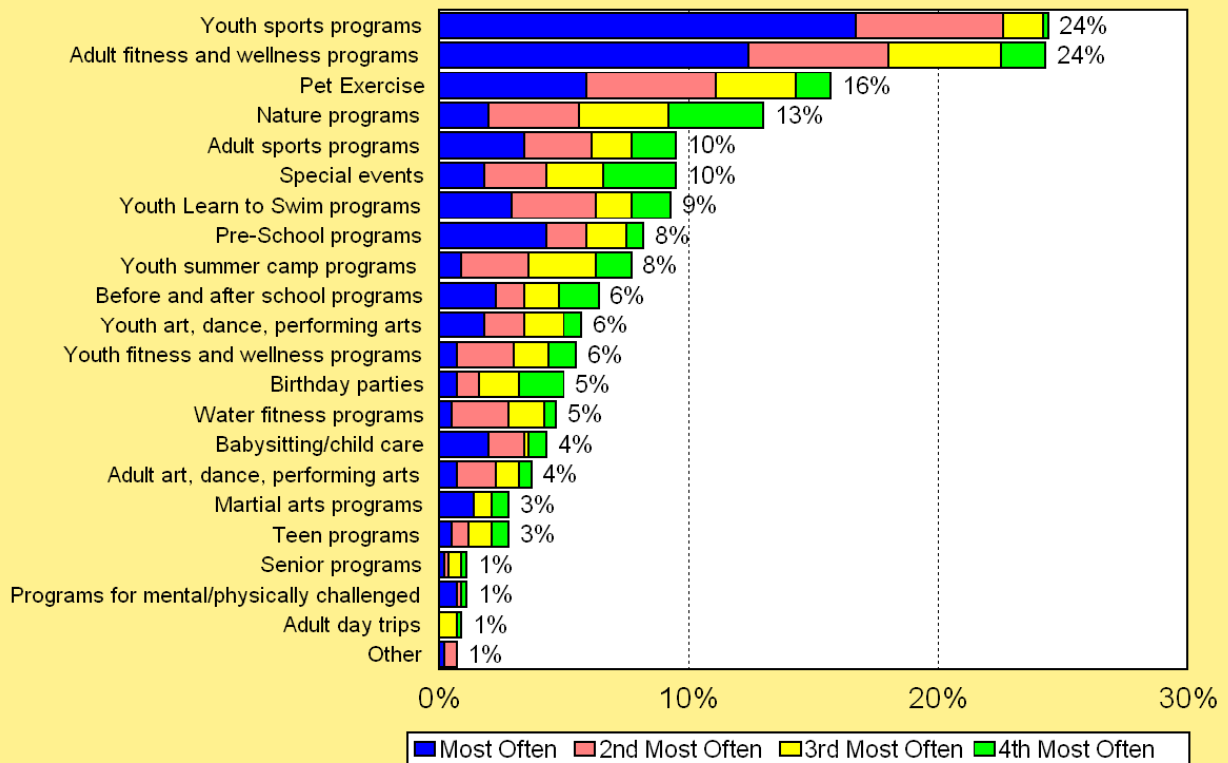
22. Programs Currently Participated in Most Often

From the list of 21 recreation programs, respondents were asked to select the four that they currently participate in the most often. The following summarizes key findings:

- Based on the sum of their top four choices, the programs that respondents currently participate in most often are: youth sports programs (24%), adult fitness and wellness programs (24%), and pet exercise (16%). It should also be noted that youth sports programs had the highest percentage of respondents select it as their first choice as the program respondents currently participate in most often.

**Q13. Programs That Respondents Currently Participate in Most Often at Liberty Township Facilities**

by percentage of respondents who selected the item as one of their top four choices

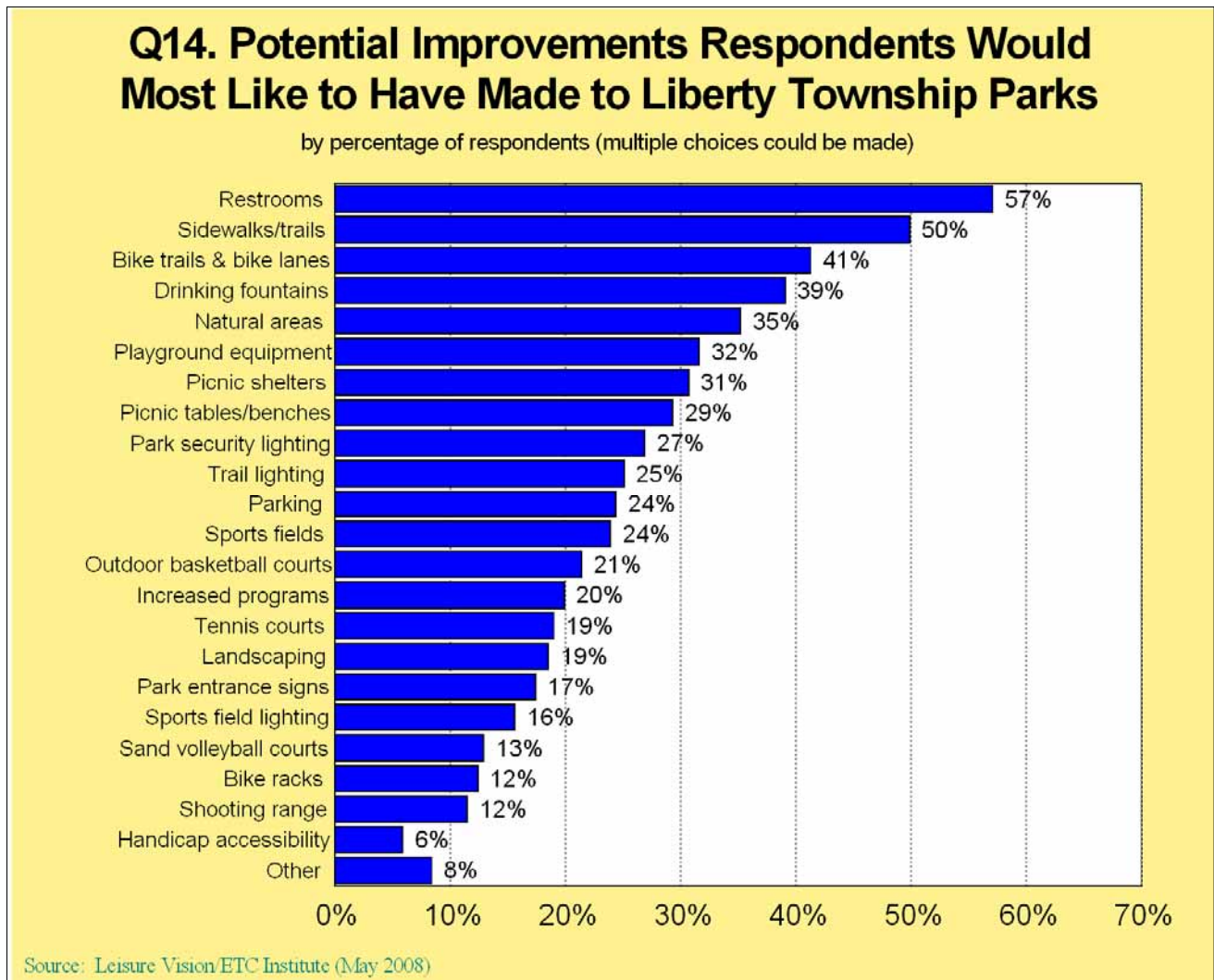


Source: Leisure Vision/ETC Institute (May 2008)

23. Improvements Respondents Would Most Like to Have Made to Liberty Township Parks

From a list of 22 improvements that could be made to Liberty Township parks, respondents were asked to indicate all the improvements they would most like to have made to Liberty Township parks. The following summarizes key findings:

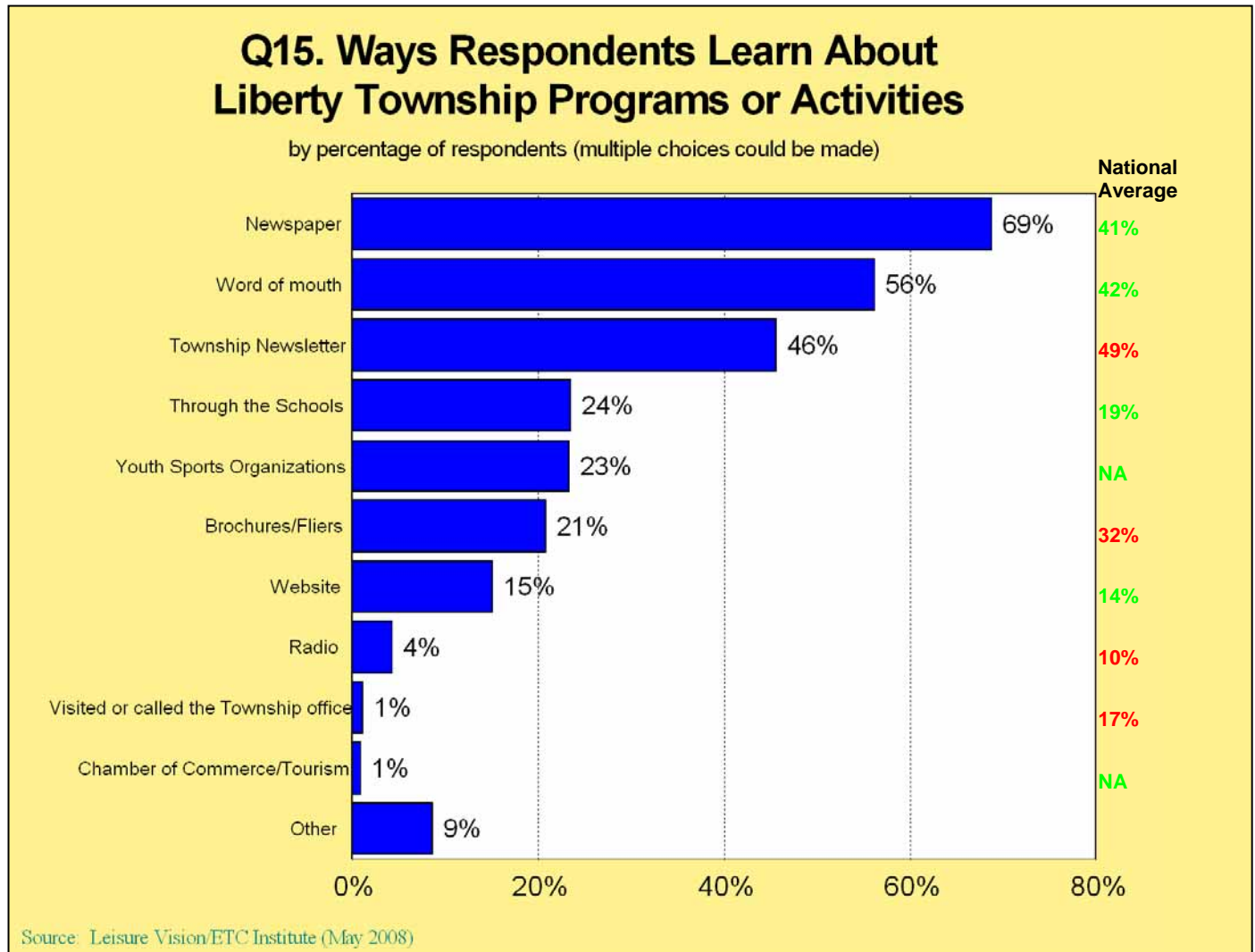
- There are seven improvements that over 30% of respondents would most like to have made to Liberty Township parks, including: restrooms (57%), sidewalks/trails (50%), bike trails and bike lanes (41%), drinking fountains (39%), natural areas (35%), playground equipment (32%), and picnic shelters (31%).



24. Ways Respondents Learn About Liberty Township Programs or Activities

From a list of 10 options, respondents were asked to indicate all the ways they learn about Liberty Township programs or activities. The following summarizes key findings:

- The newspaper (69%) is the most frequently mentioned way respondents learn about Liberty Township programs or activities. Other frequently mentioned ways include: word of mouth (56%) and the township newsletter (46%).



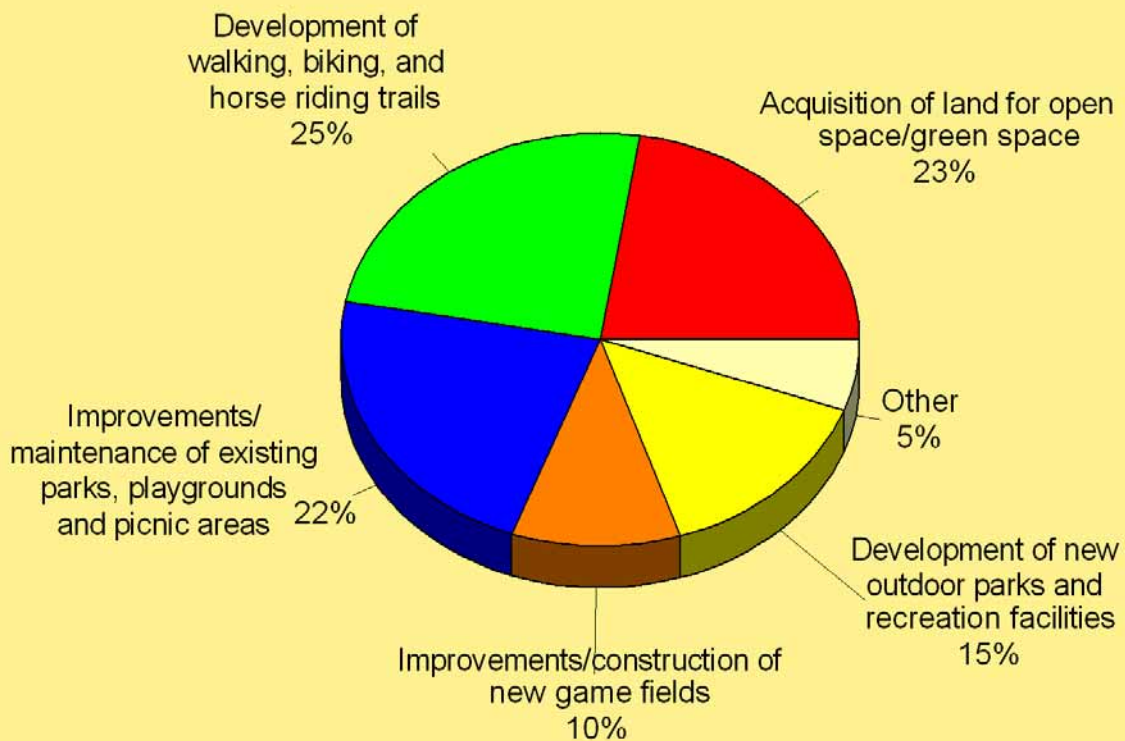
### 25. Allocation of \$100 Among Parks & Recreation Facilities in Liberty Township

Respondents were asked how they would allocate \$100 among various types of parks and recreation facilities in Liberty Township. The following summarizes key findings:

- Development of walking, biking, and horse riding trails (\$25) was the type of parks and recreation facility that respondents indicated they would allocate the most money to. The remaining \$75 was allocated as follows: acquisition of land for open space/green space (\$23), improvements/maintenance of existing parks, playgrounds and picnic areas (\$22), development of new outdoor parks and recreation facilities (\$15), improvements/construction of new game fields (\$10), and other (\$5).

### Q16. How Respondents Would Allocate \$100 Among Various Types of Parks and Recreation Facilities in Liberty Township

by percentage of respondents

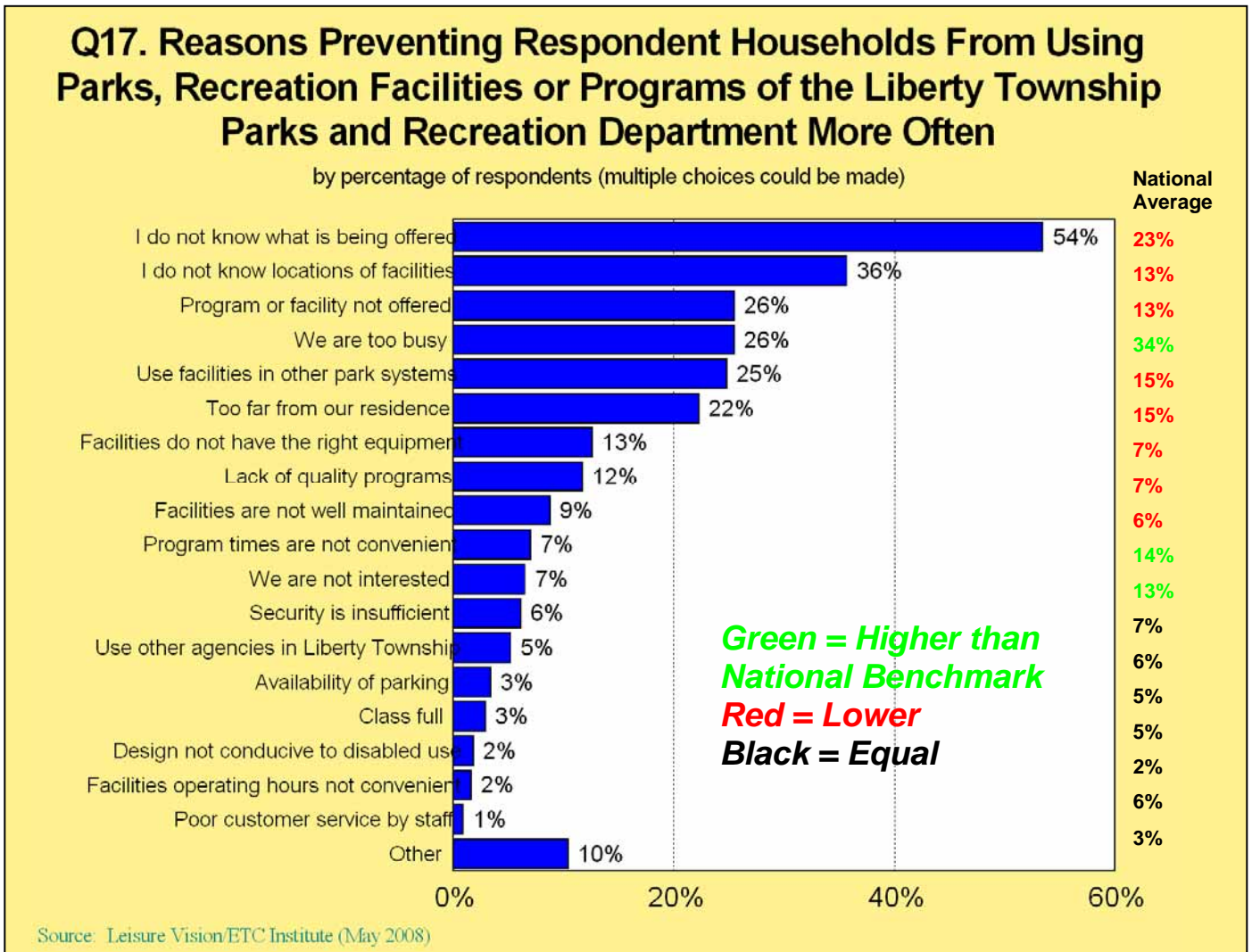


Source: Leisure Vision/ETC Institute (May 2008)

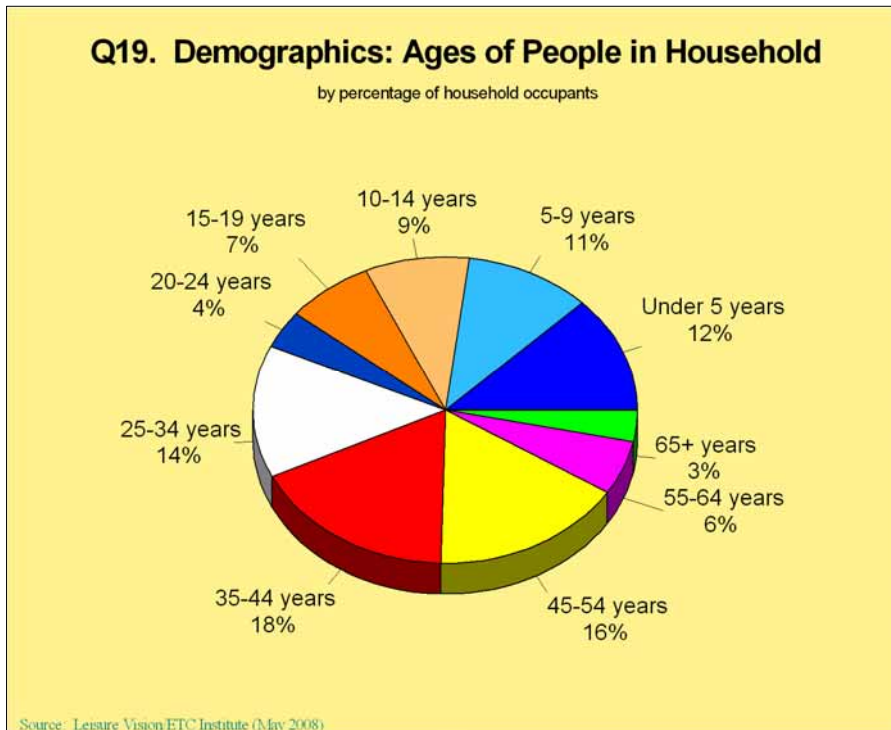
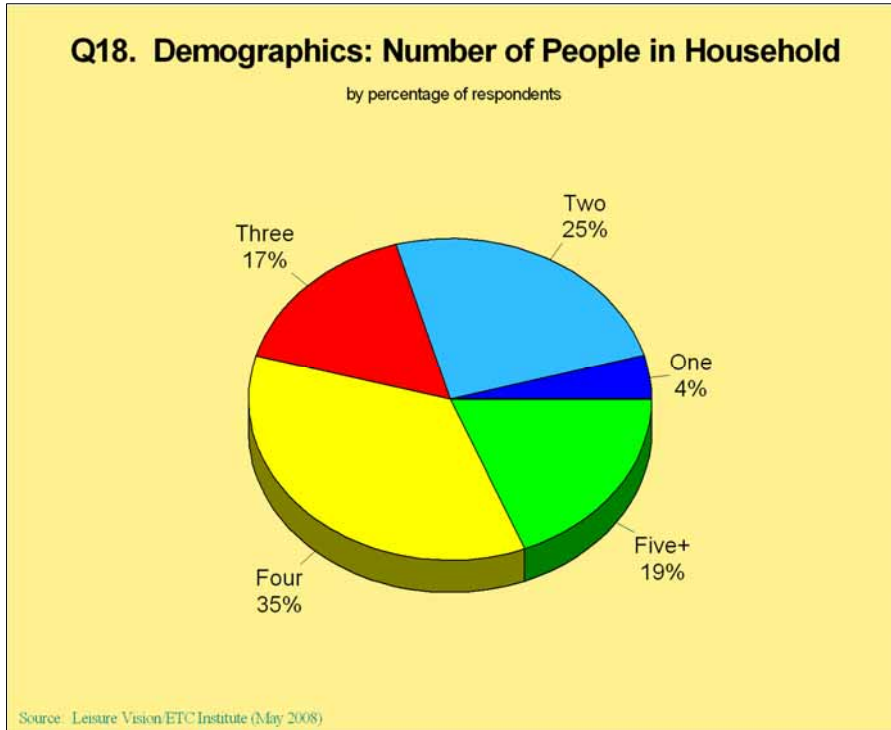
26. Reasons Preventing Respondent Households From Using Parks, Recreation Facilities and Programs More Often

From a list of 18 options, respondents were asked to indicate all the reasons preventing their household from using parks, recreation facilities and programs of the Liberty Township parks and Recreation Department more often. The following summarizes key findings:

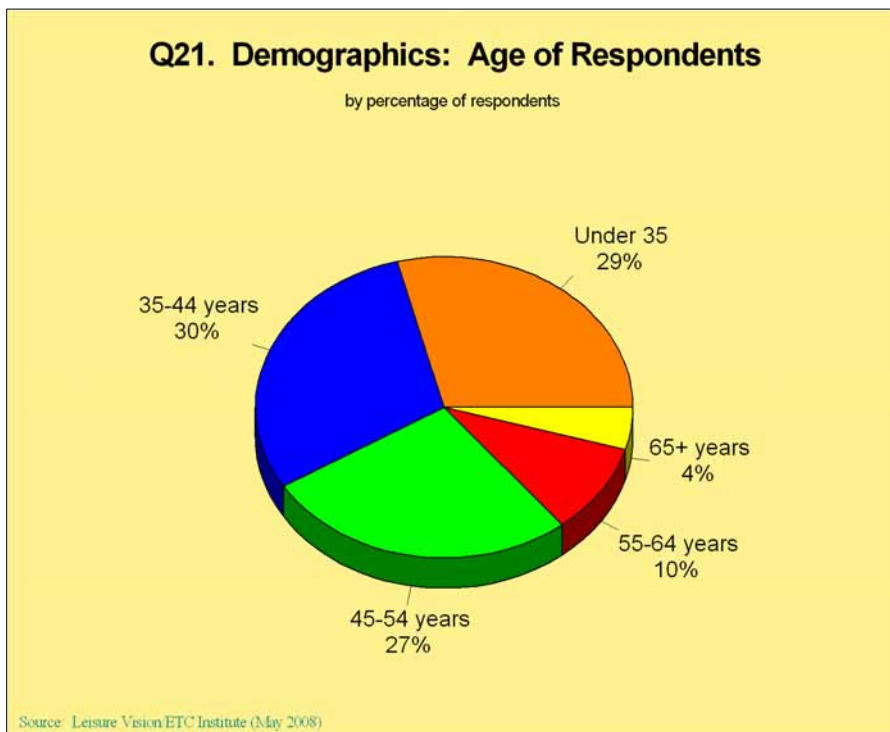
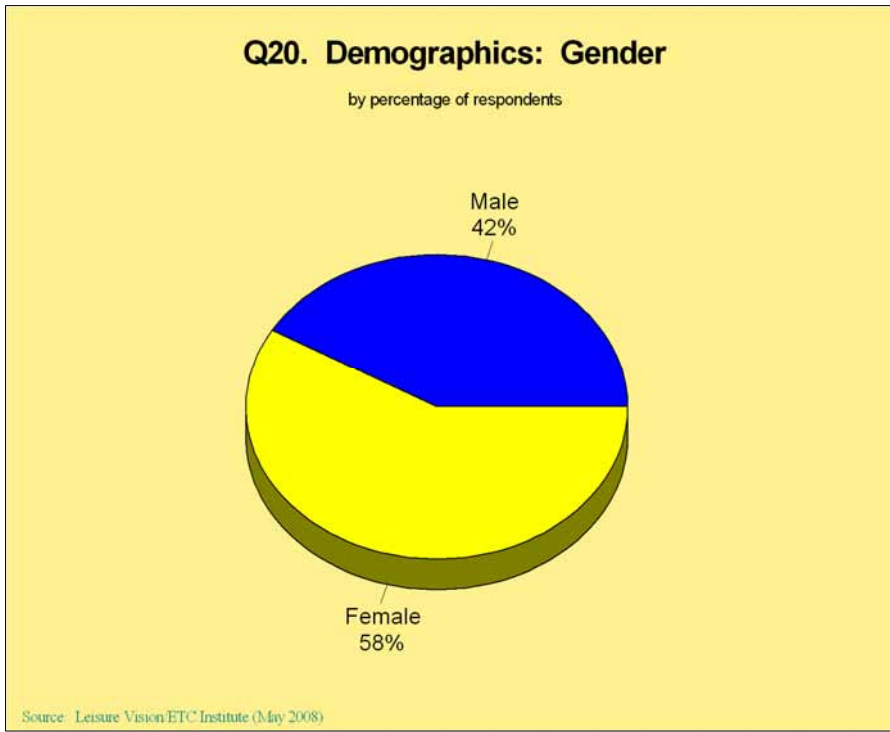
- “I do not know what is being offered” (54%) is the most frequently mentioned reason preventing respondent households from using parks, recreation facilities or programs of the Liberty Township Parks and Recreation Department more often. Other frequently mentioned reasons include: “I do not know locations of facilities” (36%), “program or facility not offered” (26%), “we are too busy” (26%), and “use facilities in other park systems” (25%).



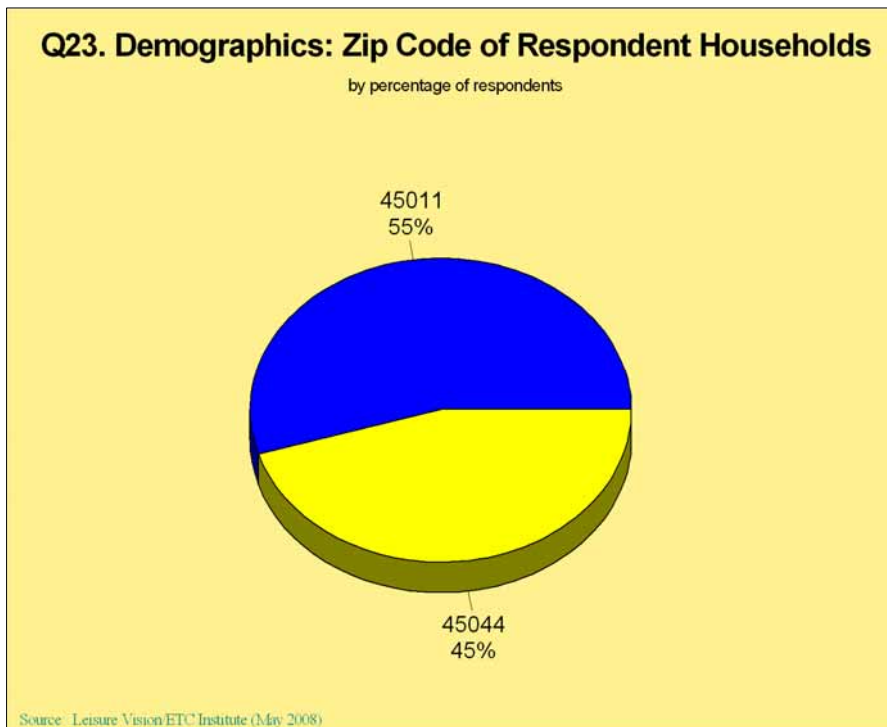
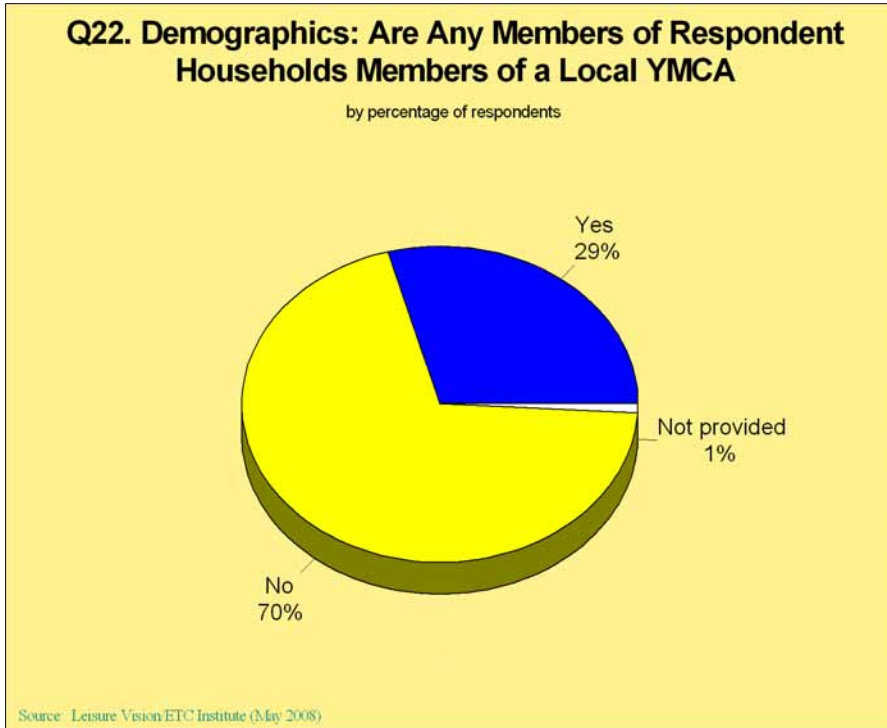
Demographics



Demographics



Demographics



### **K. Facilities Needs Analysis**

Table 13, The Level of Service Standards for Facilities, provides recreation facility goals for a variety of recreation facilities. These goals have been adapted from previous standards by the National Recreation of Park Association, in comparison to other communities, the Consultant's experience, and adjusted with the Master Plan Steering Committee. These goals were then discussed with the Master Plan Steering Committee and agreed upon. Similar goals have been used in previous master plans for several communities throughout the nation. Keep in mind that the ultimate determination of a facility need does not lay with the standard, but rather with the community input process. These goals are useful as a tool to predict the expanding need for facilities as the population grows.

Table 13: Level of Service Standards for Facilities

FACILITY	POPULATION GOAL (1 PER)	EXISTING SUPPLY Public Facilities <sup>4</sup>	2008 NEEDS		2013 NEEDS		BUILD-OUT NEEDS	
			2008 REQUIRED <sup>1</sup>	2008 SURPLUS (+) DEFICIT (-)	2013 REQUIRED <sup>1</sup>	2013 SURPLUS (+) DEFICIT (-)	Build-out REQUIRED <sup>1</sup>	Build-out SURPLUS (+) DEFICIT (-)
<b>Outdoor Areas</b>								
A. Picnic Shelter	2000	6.0	16.6	-10.6	19.2	-13.2	33.8	-27.8
B. Playground	2000	14.0	16.6	-2.6	19.2	-5.2	33.8	-19.8
C. Paved Trails (miles)-includes grave <sup>6</sup>	2000	11.2	16.6	-5.4	19.2	-8.0	33.8	-22.6
D. Unpaved Trails (miles)	5000	3.8	6.6	-2.8	7.7	-3.8	13.5	-9.7
E. Swimming Pool	40000	0.0	0.8	-0.8	1.0	-1.0	1.7	-1.7
F. Outdoor Theater	50000	0.0	0.7	-0.7	0.8	-0.8	1.4	-1.4
<b>Outdoor Fields &amp; Court Areas</b>								
A. Baseball/Softball Fields <sup>5</sup>	1400	63.0	66.4	-3.4	70.3	-7.3	91.1	-28.1
B. Soccer Fields <sup>5</sup>	1500	55.0	62.0	-7.0	65.6	-10.6	85.0	-30.0
C. Football Fields	15000	0.0	2.2	-2.2	2.6	-2.6	4.5	-4.5
D. Basketball Courts	5000	6.0	6.6	-0.6	7.7	-1.7	13.5	-7.5
E. Tennis Courts	3500	16.0	9.5	6.5	11.0	5.0	19.3	-3.3
F. Volleyball Courts	10000	0.0	3.3	-3.3	3.8	-3.8	6.8	-6.8
<b>Indoor Areas/Specialized Facilities</b>								
A. Indoor Pool	50000	0.0	0.7	-0.7	0.8	-0.8	1.4	-1.4
B. Community Center (Public Owned)	40000	0.0	0.8	-0.8	1.0	-1.0	1.7	-1.7
C. Gymnasium (Public Owned)	15000	0.0	2.2	-2.2	2.6	-2.6	4.5	-4.5

1. Based on a year 2008 population of 33,180 for Liberty Township - (Source: Liberty Township)

2. Based on a year 2013 population of 38,394 for Liberty Township - (Source: ESRI Bis Forecast)

3. Due to rounding, all figures do not add exactly.

4. Existing facilities were considered public if they were accessible to the general public.

5. Baseball/softball and soccer include fields and population of WestChester Township because several leagues include residents of both townships. Estimated population in WestChester Township in 2008 is 60,000 as provided by WestChester Township.

6. Includes 7.95 miles of HOA sites through neighborhoods

Population at Buildout

at 1.6 d.u. / acre	59,958	Liberty Township Comprehensive Plan
at 2.0 d.u. / acre	66,929	Liberty Township Comprehensive Plan
at 2.5 d.u. / acre	75,643	Liberty Township Comprehensive Plan
Use an average of	67,510	

### L. Trends in Parks and Recreation

#### 1. The Aging Population

- a. Throughout the country, the average age of the population is increasing. The number of persons in the age group - 55 and over is growing rapidly. Census data and state population data indicate that the percentage of the Liberty Township population age 65 and older was 6.4% in 1990, 4.0% in 2000 and is expected to increase to 5.0% in 2013. The numbers continually rise as the population increases. As indicated earlier in Table 4, the median age will rise from 31.6 in 1990 to 33.5 in 2013. The relative health of these individuals is better than ever before and the activities they desire are more active than in the past. The days of the old senior citizens centers where they play cards and do more sedentary activities is being replaced by incorporation into larger, more active, community and recreation centers where individuals participate in fitness programs, walking, cardiovascular exercises, aerobics, and many other more active pursuits.
- b. This trend encourages parks and recreation agencies to invest more in activities, programs, and facilities for the older population. This graying of America also generates demand for more paved walking trails, fishing areas, gardens, cultural and nature education, as well as other activities that are in demand for multiple age groups.

#### 2. Family Oriented Aquatic Facilities

- a. The older rectangle and L-shaped swimming pools had a very limited appeal. The desire to have 3 ½' depths of water for flip turns, or competition swimming, dictated a deeper water depth of the pool resulting in a lack of shallow water for younger children. Younger children were relegated to a "baby" pool, which really only appeals to tots, leaving the 4-10 year olds with no desire to visit the swimming pools.
- b. The newer family aquatic centers are geared toward the entire family with zero depth access, shallow water, interactive water spray activities, along with the traditional competition lanes and diving boards. Newer aquatic facilities are also incorporating lazy rivers, which are popular with people of all ages. The newer facilities also provide large water slides. These elements, along with providing shade structures, larger grass beach areas, and quality concessions, have resulted in a complete turn around in the operating costs for aquatic facilities. Whereas the older pools were a drain on the budget, the newer facilities are able to generate funds for the operations cost and some have even shown a surplus, which has been used to pay off some of the debt

service for the capital construction. Where older pools have been renovated to include the newer features, communities have seen as much as a 200% increase in attendance. This demand provides an opportunity for charging higher fees which may result in a greater profit margin.

- c. Another new concept that is sweeping the country is the development of spraygrounds. These have replaced the wading pools at the aquatic facilities and are also developed as freestanding wet playgrounds in other park areas. Spraygrounds have several benefits in that, in most instances, they still recirculate the water, but because there is no standing water, there is no need for lifeguards. Therefore, the operation costs are considerably lower than for a swimming facility. Communities which have had several smaller wading pools, have replaced them with spraygrounds to reduce operation costs while increasing interest and attendance.

### 3. Indoor Family Activity Centers

- a. The typical recreation center that included gymnasium space, locker rooms and a few other attractions have been replaced by much larger, multi-generational facilities that are described later in this text.
- b. The newer facilities have a much stronger emphasis on fitness with aerobics rooms, free weights, exercise machines, cardiovascular areas, walking tracks, indoor swimming pools for both family oriented and lap swimming, lounges, concessions, and climbing walls, along with the traditional basketball and volleyball gymnasiums. These facilities may also include multipurpose rooms, which are used for a wide variety of indoor programming, such as arts and crafts, dance classes, and other community education programs.

### 4. Trail Linkages and Linear Parks

This trend has been ongoing for a long time, and is still very important in nearly every community where surveys have been conducted. Communities that have extended trail systems still have a strong desire to continually connect and link the trails to neighborhoods, schools, shopping areas, and other community facilities. These communities are very livable communities with a high quality of life.

### 5. Revenue Generating Facilities

With the advent of tightened budgets throughout the country, facilities that generate revenue have become increasingly popular because of their ability to offset some of the operating costs. Most notably, the increased

use of concessions in parks and at other locations have improved the ability of the public sector to raise money. Multi-field complexes, in addition to miniature golf courses, carousels, paddleboats and canoe rentals and other creative applications have enhanced the community experience while lessening the tax burden.

### 6. Dog Parks

The construction of dog parks is an ongoing trend that has been sweeping the country in the last five to ten years. The development of fence enclosed areas where dogs can run leash free can be a positive addition to a community. Dog parks have proven to be good for improving the social interaction skills of dogs and have also been a very good social attraction for the dog owners. Quality dog parks need well-conceived planning. They also need a fairly extensive operating budget that includes staff time for maintenance and upkeep.

### 7. Extreme Parks

a. Due partly to the growth of extreme sports shown on television, the pursuit of extreme sports activities, especially by teenagers, has increased by hundreds of percent. Nearly every community that does not have a skatepark has a very large contingent of teens and young adults that are strong advocates for skatepark development. Other types of active pursuits in this park type include BMX tracks, mountain bike trails, climbing walls, as well as the skateparks. These activities appeal to a demographic that has decided not to be part of the traditional parks and recreation programming activities.

b. The communities that have developed successful skateparks will entice dozens of teens to gather in the park. These parks can actually be construed as teen oriented parks and should be supplemented with other facilities, such as basketball courts, sand volleyball courts, and snack bars.

### 8. Fitness

a. We are reminded every day through the media that Americans are becoming less fit. There is a strong emphasis at the state to the federal levels to improve the fitness of individuals throughout the United States. Local park and recreation departments are building upon this message. They are probably the best organizations to make an impact in the overall fitness of the community through programs, promotions, and facilities that are available to the residents to improve their health and fitness.

### 9. Tournament Facilities

- a. As mentioned in the revenue generation section, tournaments can be a revenue generator by exacting entrance fees and promoting concession sales. There is a trend to develop facilities that are of tournament level quality to attract better teams and better tournaments to the facilities. These high quality facilities offer a bonus for the local leagues and activities when not being used for tournaments. A balance does need to exist between local league use and use for tournaments.
- b. Facilities must be designed to accommodate tournaments with larger parking lots, arrangement of fields in a cluster such as a wagon wheel configuration for baseball and softball fields. There must be quality restroom facilities, concessions, shade and other amenities throughout the park that make it a desirable place to spend the day or a weekend.

### 10. Synthetic Turf Fields

Many school systems and municipalities are developing synthetic turf fields to meet the ever increasing demand for soccer, football, lacrosse, rugby and other athletic pursuits. These are higher cost initially, but the ability to play on the fields continuously without the need to water, fertilize, mow, stripe, etc. is a maintenance savings to the community. The fields can be developed to be flat and can accommodate substantial rains without damage to the surface. The fields are safer than overused grass fields. The main benefits of synthetic turf fields include:

- Lower long term operating costs per event
- Safer surfaces for athletes
- Ability to schedule significantly more events on the same area versus natural grass fields
- Ability to extend the season by allowing use earlier in spring and later in fall without damaging turf
- Less rain outs
- In communities with limited fields available, synthetic turf fields allow the maximum use on the same area
- No need for watering, mowing, fertilizing or striping

### 11. Universal Access

Many park systems are developing unique facilities, (especially playgrounds) that are designed to go well beyond the minimum requirement for the Americans with Disabilities Act. By creating an environment that is totally accessible to persons of all ages and abilities, park system administrators are setting the best example for other organizations to follow. In the case of playgrounds, this results in

playgrounds with several ground level activities, multiple ramps providing access to the decks, and the use of poured-in-place rubber surfacing.

Several major facilities have developed trails utilizing paved, level surfaces that also have textured edging for the visually impaired. Fragrant plants and sensory gardens, interactive displays that allow a hands-on approach to education have also been developed to promote a better experience for special populations. While it may not be cost effective to develop this level of universal access at every playground facility, it is the practice of forward thinking recreation departments to install some destination facilities that are developed to this level.

Universal access applies to a lot more than playgrounds; it also applies to aquatic facilities, interpretive facilities, trails, access into buildings and access to all programs and facilities offered by the community.

### 12. Cultural Education

As the population of cities and counties becomes more diverse, there is a strong desire for more heritage programs. There has also been an increase in participation in many programs for the visual and performing arts. These programs are becoming more common as program offerings initiated by parks and recreation departments increase.

Cultural education covers a lot of ground. It encompasses all of the arts, such as visual and performing arts, as well as heritage recognition. Communities become stronger when its citizens better understand their cultural links to the community.

### 13. Nature Education

The success of environmental education centers throughout the country indicate that there is a strong desire and need to better educate the public, and especially children, in natural processes, resource management and similar nature education activities. These work well in conjunction with the school systems to supplement their science curriculum. This “environmental education” develops a strong base of support for the large expanses of open space and natural habitats that are owned by the county or municipality. Many park departments and commissions take an outreach approach by providing environmental curriculum to the schools in the form of nature center classes and activities. This tactic provides a method for promoting more use and appreciation of the parks. This is also an opportunity for the county park systems and universities to work closely with the municipal parks and recreation departments to provide a level of programming that the municipalities could not perform on their own.

### 14. Nationwide Sports Participation

- a. The National Sporting Goods Association (NSGA) conducts a survey every two years of 10,000 households throughout the United States. This sample is selected from 300,000 pre-recruited households. These surveys are used to generate a series of tables that identify trends in sports participation. The Nationwide Ten-Year History of Selected Sports Participation Table (Table 14) identifies the major activities that are surveyed through this study. The activities are listed by their rank order in the year 2006. For example, exercise/walking is the most participated activity at 87.5 million participants. This is followed by swimming at 56.5 million and exercising with equipment at 52.4 and camping at 48.6 million. The table shows baseball and soccer, as two of the most common activities requested as part of the study, as 19th and 20th on the list with 14.6 and 14.0 million participants respectively. When combining baseball and softball, it increases to a total of 27.0 million. The table indicates that for the ten year period surveyed, baseball and soccer have shown fluctuation, but overall have remained at a steady figure. Table 15 identifies the national trend in youth sports participation and indicates that youth baseball has grown by 3.5% and soccer has grown by 2.7% over the ten year period.

**Table 14: Nationwide Ten-Year History of Selected Sports Participation**

Participated more than once (in millions)  
Seven (7) years of age and older

Sport	2006	2004	2002	2000	1998	1996
Exercise Walking	87.5	84.7	82.2	86.3	77.6	73.3
Swimming	56.5	53.4	53.1	60.7	58.2	60.2
Exercising with Equipment	52.4	52.2	46.8	44.8	46.1	47.8
Camping (vacation/overnite)	48.6	55.3	55.4	49.9	46.5	44.7
Bowling	44.8	43.8	42.4	43.1	40.1	42.9
Fishing	40.6	41.2	44.2	49.3	43.6	45.6
Workout at Club	36.9	31.8	28.9	24.1	26.5	22.5
Bicycle Riding	35.6	40.3	39.7	43.1	43.5	53.3
Aerobic Exercising	33.7	29.5	29	28.6	25.8	24.1
Weight Lifting	32.9	26.2	25.1	24.8	na	na
Billiards/Pool	31.8	34.2	33.1	32.5	32.3	34.5
Hiking	31	28.3	27.2	24.3	27.2	26.5
Boating, Motor/Power	29.3	22.8	26.6	24.2	25.7	28.8
Running/Jogging	28.8	26.7	24.7	22.8	22.5	22.2
Basketball	26.7	27.8	28.9	27.1	29.4	31.8
Golf	24.4	24.5	27.1	26.4	27.5	23.1
Hunting with Firearms	17.8	17.7	19.5	19.1	17.3	18.3
Target Shooting	17.1	19.2	18.9	14.8	12.8	14.7
Baseball	14.6	15.9	15.6	15.6	15.9	14.8
Soccer	14	13.3	13.7	12.9	13.2	13.9
Backpack/Wilderness Camp	13.3	15.3	14.8	15.4	14.6	11.5
Softball	12.4	12.5	13.6	14	15.6	19.9
Football (tackle)	11.9	8.6	7.8	7.5	7.4	9
Volleyball	11.1	11.8	11.5	12.3	14.8	18.5
In-Line Roller Skating	10.5	11.7	18.8	21.8	27	25.5

## Needs Analysis

Participated more than once (in millions)  
Seven (7) years of age and older

<b>Sport</b>	<b>2006</b>	<b>2004</b>	<b>2002</b>	<b>2000</b>	<b>1998</b>	<b>1996</b>
Tennis	10.4	9.6	11	10	11.2	11.5
Skateboarding	9.7	10.3	9.7	9.1	5.8	4.7
Scooter Riding	9.5	12.9	13.4	11.6	na	na
Mountain Biking (off road)	8.5	8	7.8	7.1	8.6	7.3
Paintball Games	8	9.4	6.9	5.3	na	na
Canoeing	7.1	7.5	7.6	6.2	7.1	8.4
Skiing (alpine)	6.4	6.3	7.4	7.4	7.7	10.5
Water Skiing	6.3	5.3	6.9	5.9	7.2	7.4
Hunting w/Bow & Arrow	5.9	5.8	4.6	4.7	5.6	5.5
Snowboarding	5.2	6.6	5.6	4.3	3.6	3.1
Cheerleading	3.8	3.8	na	na	3.1	na
Wrestling	3.8	na	na	na	na	na
Muzzleloading	3.7	3.8	3.6	2.9	3.1	3.2
Hockey (ice)	2.6	2.4	2.1	1.9	2.1	2.1
Skiing (cross country)	2.6	2.4	2.2	2.3	2.6	3.4

SOURCE: National Sporting Goods Association, Mt Prospect IL 60056 847.296

## Needs Analysis

**Table 15: 2006 Youth Participation in Selected Sports with Comparisons to 1997 (National)**

Participated more than once (in thousands)  
Seven (7) years of age and older

	Year	Total	Change vs 1997	Total 7-11	Change vs 1997	Total 12-17	Change vs 1997
Total U.S.	1997	240,325		19,466		23,071	
Total U.S.	2006	263,138	9.50%	19,472	0.00%	25,261	9.50%
<b>Sport</b>							
<b>Baseball</b>							
Baseball	1997	14,146		4,739		3,678	
Baseball	2006	14,646	3.50%	3,691	-22.10%	3,910	6.30%
<b>Basketball</b>							
Basketball	1997	30,660		6,837		7,880	
Basketball	2006	26,735	-12.80%	5,427	-20.60%	7,218	-8.40%
<b>Bicycle Riding</b>							
Bicycle Riding	1997	45,119		11,190		8,482	
Bicycle Riding	2006	35,621	-21.10%	7,872	-29.60%	6,341	-25.30%
<b>Bowling</b>							
Bowling	1997	44,770		5,731		7,118	
Bowling	2006	44,779	0.00%	5,060	-11.70%	7,612	6.90%
<b>Fishing (Fresh water)</b>							
Fishing (Fresh water)	1997	38,956		4,831		5,025	
Fishing (Fresh water)	2006	36,637	-6.00%	4,470	-7.50%	4,067	-19.10%
<b>Football (Tackle)</b>							
Football (Tackle)	1997	8,219		1,841		2,983	
Football (Tackle)	2006	11,888	44.60%	2,199	19.50%	4,149	39.10%
<b>Golf</b>							
Golf	1997	26,216		1,049		2,255	
Golf	2006	24,428	-6.80%	879	-16.10%	2,150	-4.70%
<b>Ice Hockey</b>							
Ice Hockey	1997	1,925		304		406	
Ice Hockey	2006	2,559	32.90%	430	41.30%	335	-17.50%
<b>In-line Skating</b>							
In-line Skating	1997	26,550		9,152		7,163	
In-line Skating	2006	10,497	-60.50%	3,103	-66.10%	3,054	-57.40%
<b>Mountain Biking (off road)</b>							
Mountain Biking (off road)	1997	8,109		997		1,192	
Mountain Biking (off road)	2006	8,543	5.40%	863	-13.50%	1,000	-16.10%

## Needs Analysis

Participated more than once (in thousands)  
Seven (7) years of age and older

	Year	Total	Change vs 1997	Total 7-11	Change vs 1997	Total 12-17	Change vs 1997
Total U.S.	1997	240,325		19,466		23,071	
Total U.S.	2006	263,138	9.50%	19,472	0.00%	25,261	9.50%
<b>Sport</b>							
Mountain Biking (off road)	1997	8,109		997		1,192	
Mountain Biking (off road)	2006	8,543	5.40%	863	-13.50%	1,000	-16.10%
<b>Skateboarding</b>							
Skateboarding	1997	6,334		2,654		2,401	
Skateboarding	2006	9,731	53.60%	2,910	9.60%	4,437	84.80%
<b>Soccer</b>							
Soccer	1997	13,651		5,624		4,109	
Soccer	2006	14,024	2.70%	4,796	-14.70%	4,095	-0.30%
<b>Softball</b>							
Softball	1997	16,339		2,385		3,431	
Softball	2006	12,442	-23.90%	2,339	-1.90%	2,824	-17.70%
<b>Tennis</b>							
Tennis	1997	11,106		1,022		1,766	
Tennis	2006	10,356	-6.80%	787	-23.00%	2,216	25.50%
<b>Volleyball</b>							
Volleyball	1997	17,836		1,801		4,869	
Volleyball	2006	11,062	-38.00%	1,095	-39.20%	3,971	-18.40%

### M. Benchmark Comparison to Other Ohio Communities

One method of evaluating the parks and recreation programs and services offered in the community is to perform a benchmarking comparison to other communities. This was prepared as part of the master planning process. Responses were received from 12 other communities. Detailed comparisons of the survey are included in Appendix E. These tables provide separate comparisons for the following:

1. Park Land Comparison
2. Budget Comparison
3. Staff Comparison
4. Athletic Field Comparison
5. Aquatic Center Comparison
6. Recreation Center Comparison

#### Summary of Results

##### 1. Park Land Comparisons

This table indicates that the common factors, which include the columns on the far right, include the percentage of parkland for active recreation, citizens per active park acre, and total park acres per 1,000 residents. The percentage of parkland for active recreation is 28% in Liberty Township, which is much lower than both the average and the median of 57% and 61%. The citizens per park acre category in column N indicates there are 490 citizens per active park acre in Liberty Township, which is higher than both the average of 453 and the median of 271 acres. The total park acres per 1,000 residents factors in the park acres that are owned by the local government indicates that there are 7.35 park acres per 1,000 residents, which is better than the average of 9.1 and the median of 7.9, but not by a large amount.

##### 2. Budget Comparisons

The budget comparisons table also has some categories with common factors, such as column D with the expenditure per person of the communities, which the survey average was \$110 per person and the median was \$33. Liberty Township does not have a specific parks and recreation budget for comparison purposes, but the 2009 budget for park maintenance and events calculates at approximately \$12 per person, well below the average and median.

### 3. Staff Comparisons

Staff comparisons indicate that the total acres employee under column L indicate 60.64 for Liberty Township, which is higher than the average of 39.25 and the median of 10.4 by significant amounts. The total employees per 1,000 populations in column M indicates 0.12 employees per 1,000 population, which is much lower than the average of 5.76 and the median of 0.73. Full time employees per 1,000 population of 0.12 are close to the median of 0.13, but lower than the average. This table also provides break downs of part time versus full time and seasonal employees for comparison purposes.

### 4. Athletic Fields Comparisons

This table looks at the various types of fields within the community and breaks them down by fields that the community has access to, and fields that the community prepares. For each of the categories, there is a figure for citizens per field during the prime season, which is the common denominator. For Liberty Township there are 1,571 citizens per field in the prime season for soccer, which is much better than the average of 4,574 and the median of 3,571 but the participation levels are extremely high in Liberty Township as we have seen from the previous information. The softball and baseball fields are also better served than the average and median of other communities with 1,833 citizens per field during the prime season as compared to the average of 3,029 and the median of 2,375. Football has 5,500 citizens per field as compared to the average of 15,395 and the median of 12,500. There are no lacrosse fields in Liberty Township to compare.

### 5. Aquatic Center Comparisons

There are no public aquatic centers in Liberty Township for comparison purposes, but this table does indicate the communities that have outdoor aquatic centers that include cities. The townships that were surveyed do not operate outdoor aquatic facilities.

### 6. Recreation Center Comparisons

Similar to the aquatic centers, the communities which have recreation centers include Oxford, Mason, Evansdale, Moraine, and Anderson Township Park District.